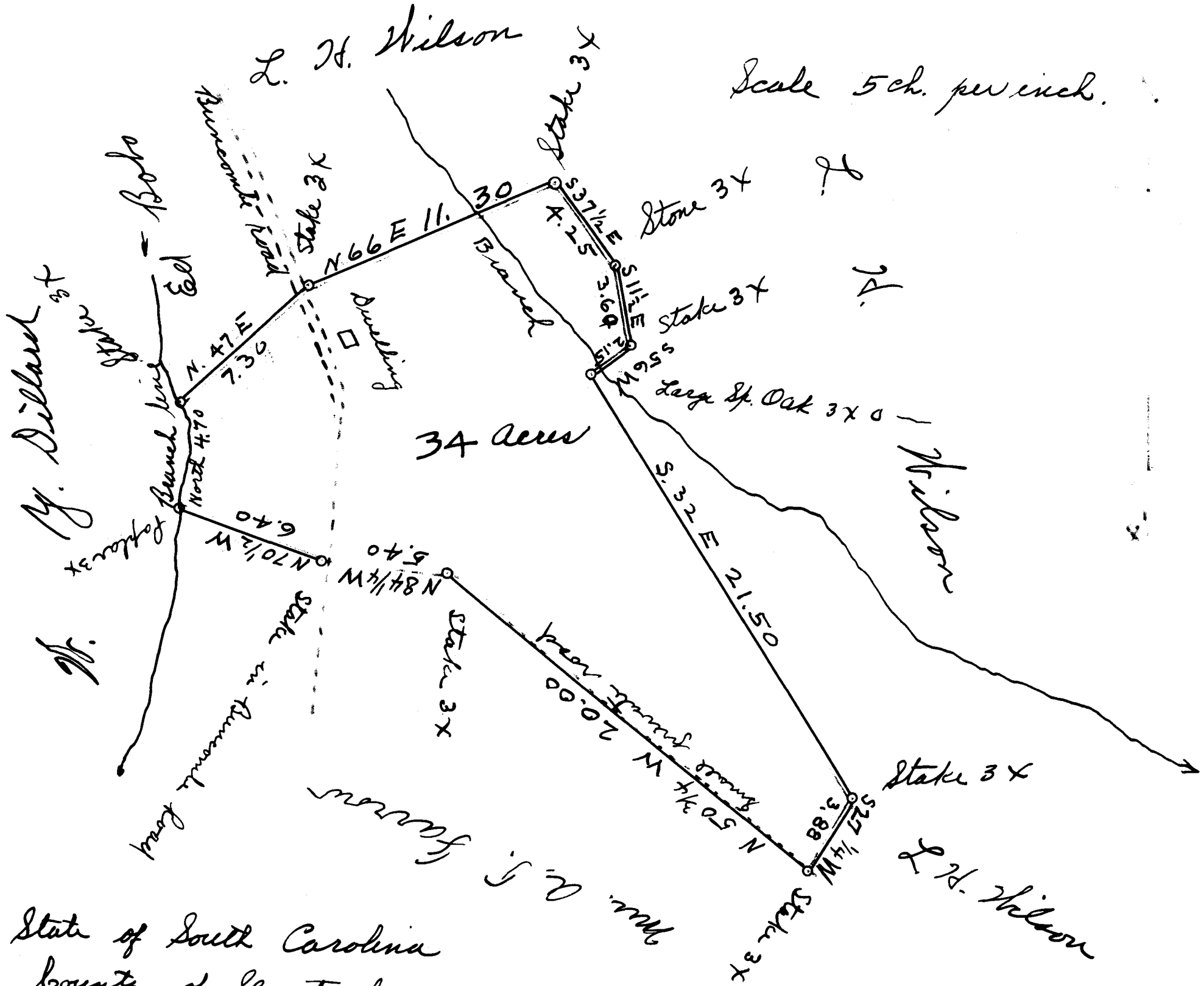


Ex Parte  
A. J. Farrow



State of South Carolina  
County of Spartanburg

The above Plat represents a tract of land  
Surveyed for A. J. Farrow. Containing Thirty four  
Acres more or less. Surveyed April 14, 1906

S. G. Anderson  
Surveyor

Registered, Certified & Examined August 2nd 1915