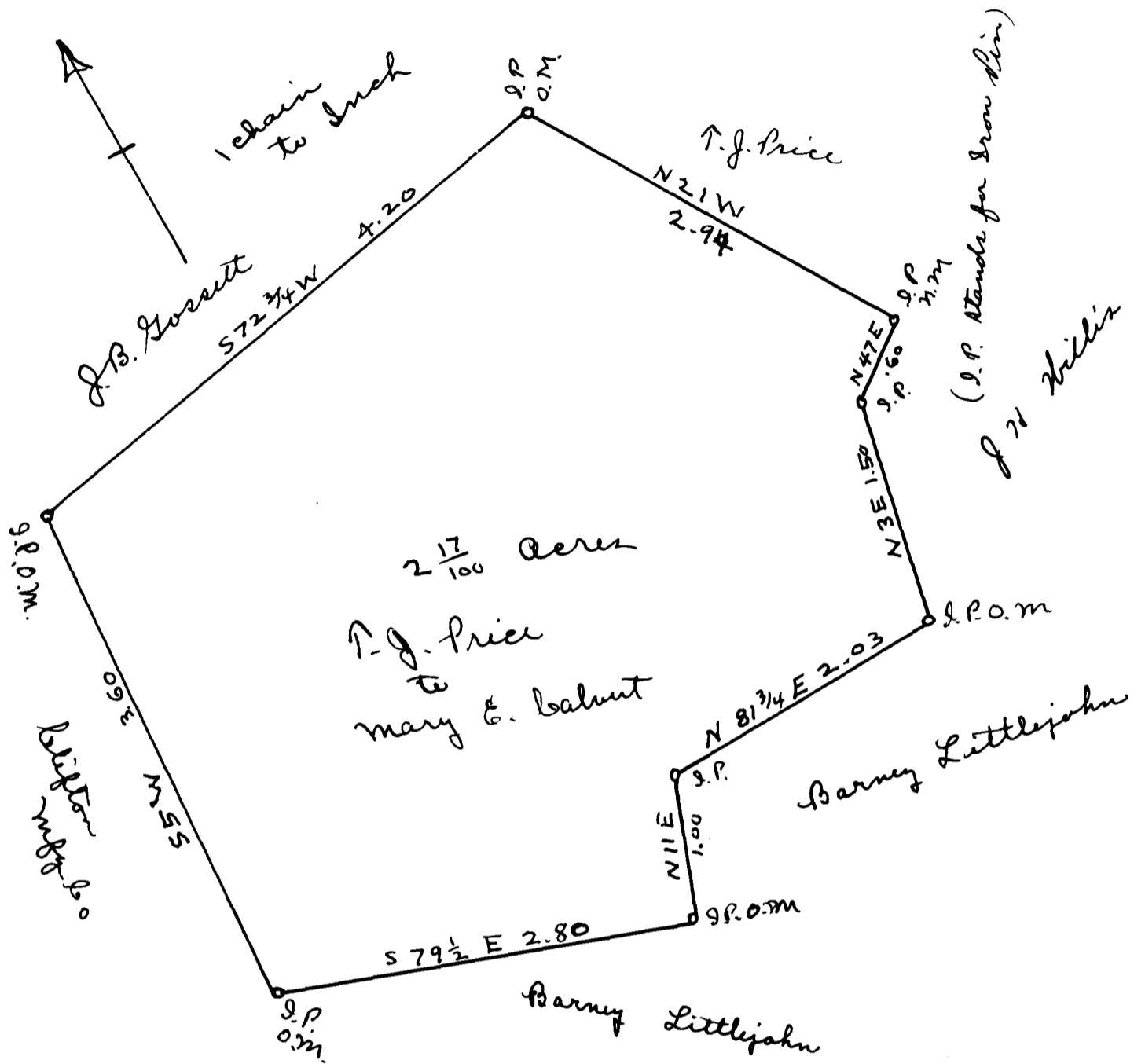


EX PARTE
MARY E. CALVERT



State of South Carolina
 County of Spartanburg
 At the request of T. J. Price, I have
 this day laid off a certain tract or
 parcel of land near the town of
 Blyton No. 2, State and County above
 and found same to contain 2.17 acres

Feb. 13, 1909

SJ Dupri
 Surveyor

Registered, Certified & Examined December 24th 1915