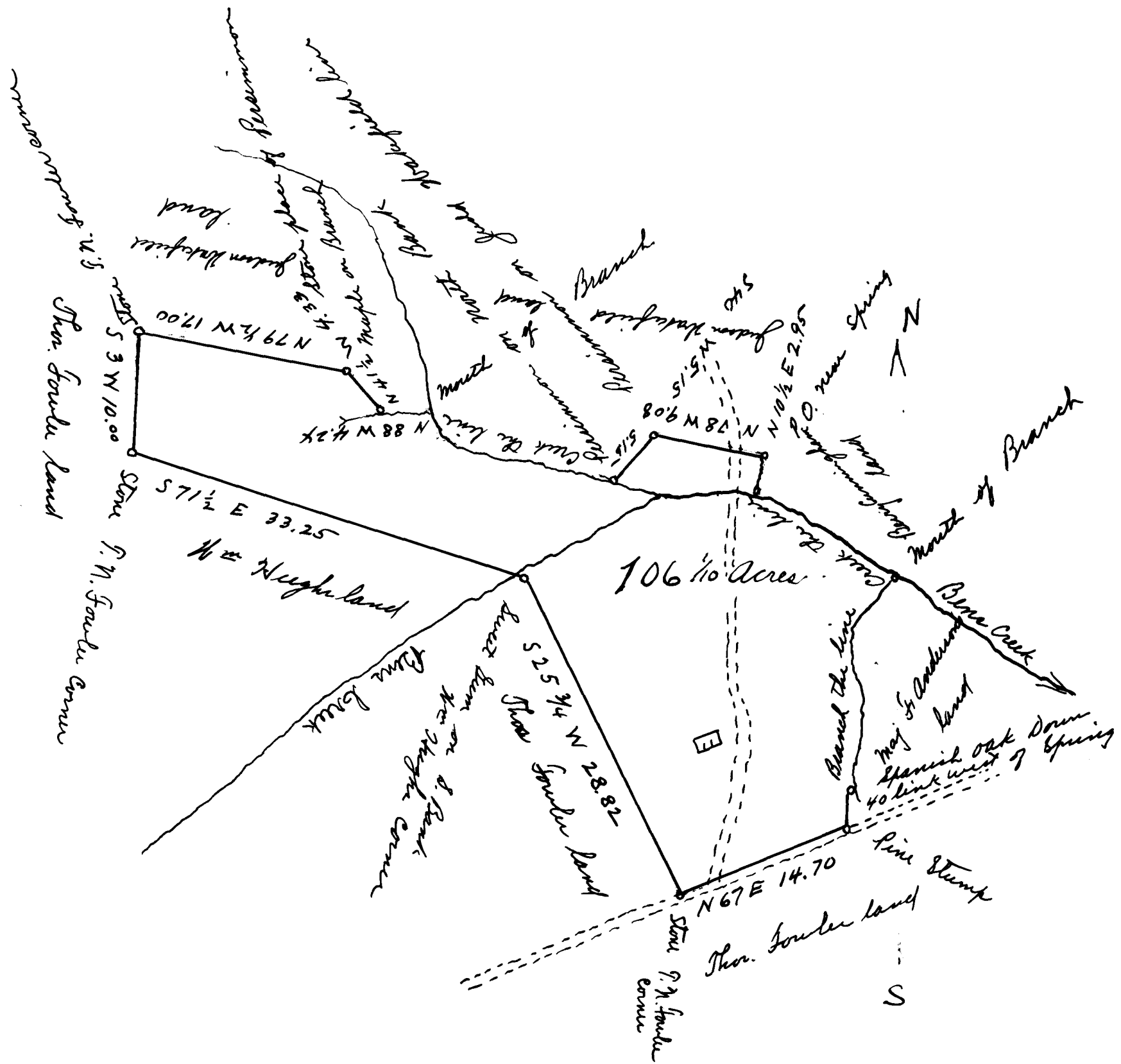


*E. Parte*  
*B. L. Cunningham or Estate of Mrs E. A. Waters*



The above Plat represents Lot No. 16 of the Estate of Mrs. E. A. Waters containing 106 <sup>1</sup>/<sub>10</sub> Acres, more or less, Situate in the County of Spartanburg State of South Carolina on the waters of Bens Creek. Surveyed by order of — this 20<sup>th</sup> day of Feb. 1894  
*H. W. Harris*  
 Surveyor  
 2 miles from Ridville.

Registered, Certified & Examined January 14<sup>th</sup> 1916