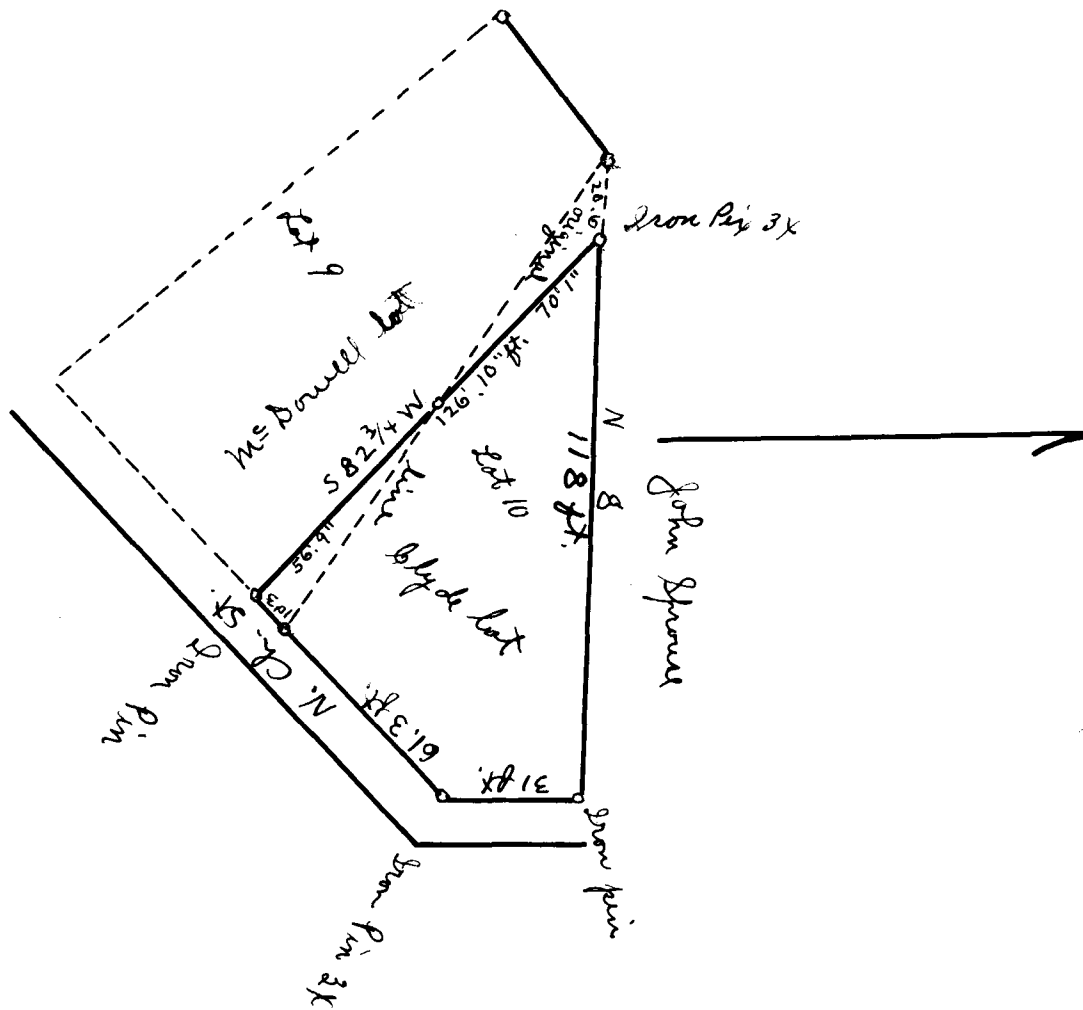


Ex Parte
 L.L. McDowell and
 W.L. Blyde



South Carolina
 Spartanburg County

The above plot represents an exchange of land between L.L. McDowell and W.L. Blyde, the heavy lines represents Blyde's lines, the dotted & lines the exchange and contains a fraction of an acre
 Jan. 8 - 1916

J.R. Hillams

N.B. the front triangle sold to Blyde, and rear triangle sold to McDowell.

J.R. Hillams

note: See Deed Book 5-L page 719 and Deed Book 5-N page 698

Registered, Certified & Examined January 25th 1916