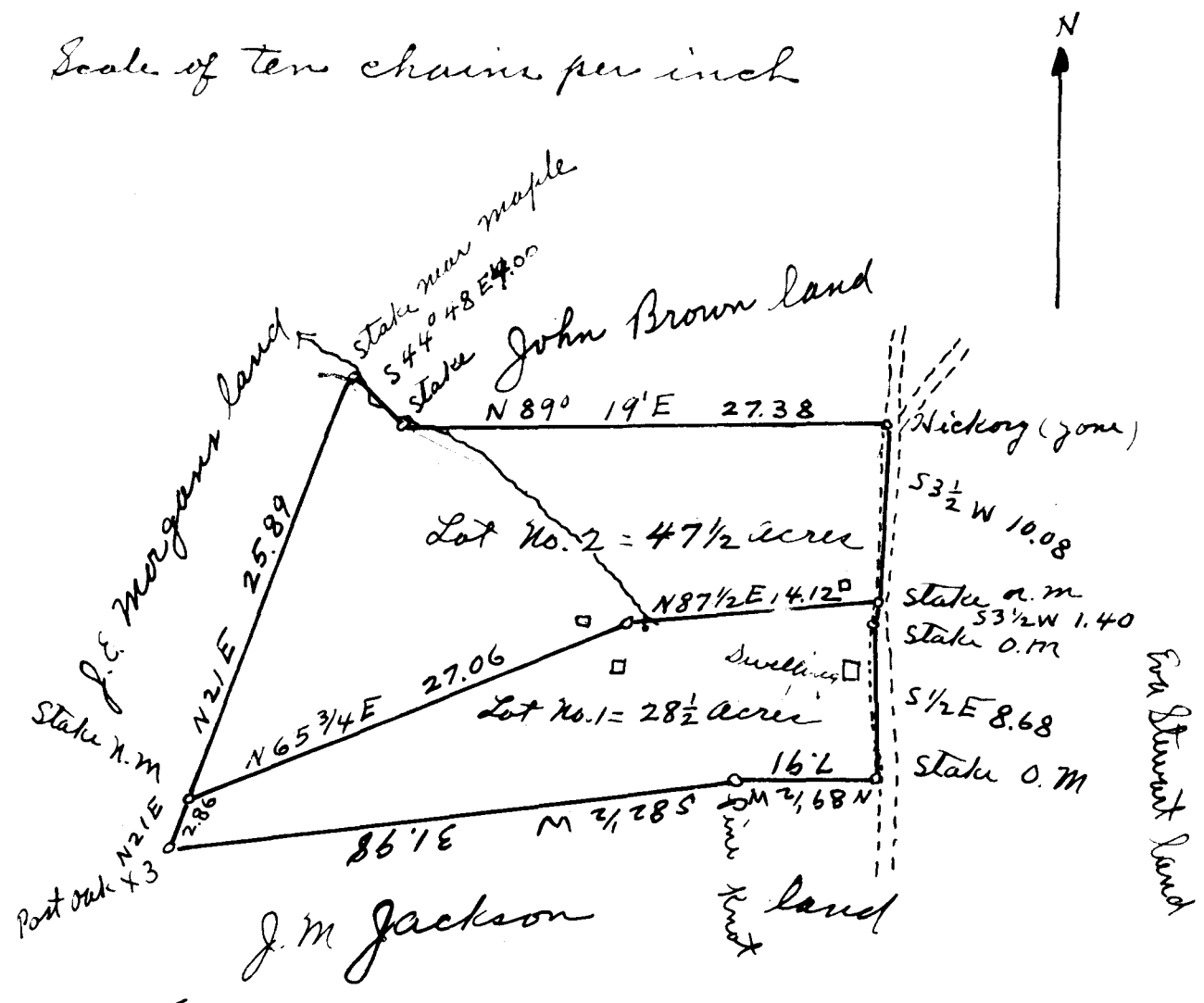


Part
 Jos. Ross Estate



State of South Carolina }
 Spartanburg County }
 The above plat correctly represents a lot of land belonging to the estate of Jos. Ross Decd. It has the metes and bounds as above set forth. It is situated in Spartanburg County, S.C. and lies on the west side of Howard Gap Road or National Highway and about two miles south of Landrum, S.C.
 Surveyed and plotted by me ending Nov. 5th 1915
 M. E. Johnson

Registered, Certified & Examined Jan. 20th 1916