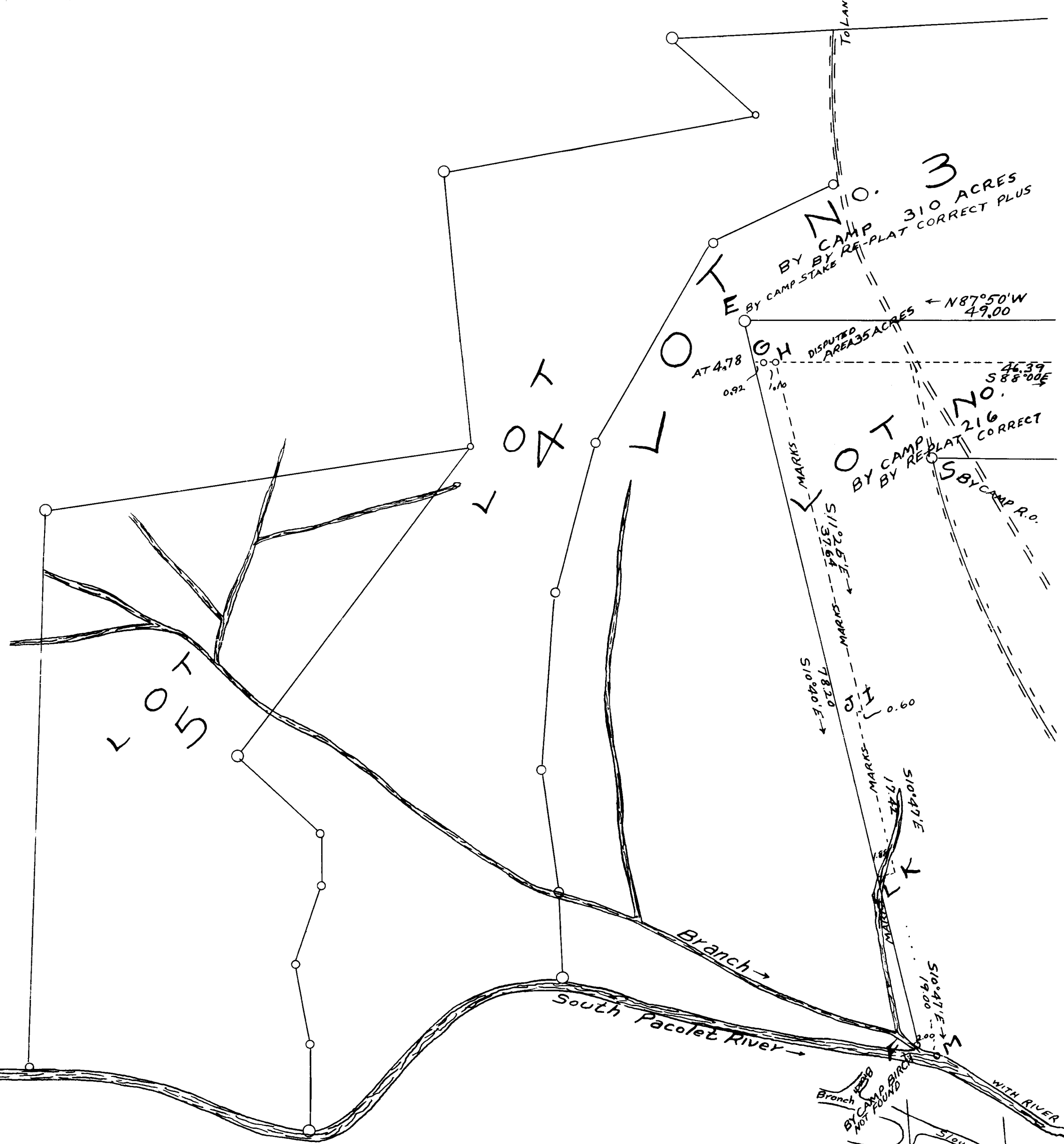


EX PARTE  
MARION J. STEVENS  
VS  
FRANK J. & EVA J. STEWART

Magnetic Meridian Nov. 1926 used 2°10' west of Camp 1870 Meridian



SURVEY  
BY  
ORDER OF COURT  
IN THE CASE OF  
MARION J. STEVENS VS. FRANK J. & EVA J. STEWART  
TITLES OF CLAIMANTS FROM AND AS LOTS 2 & 3 OF EST. OF J. M. JACKSON, PLAT BY W. C. CAMP 1871.  
RETRACEMENT OF CAMP 1871 PLAT ON GROUND  
ALSO  
A SURVEY OF LINES AS OCCUPIED BY CULTIVATION TURN ROWS & MARKED TREES THROUGH WOODS

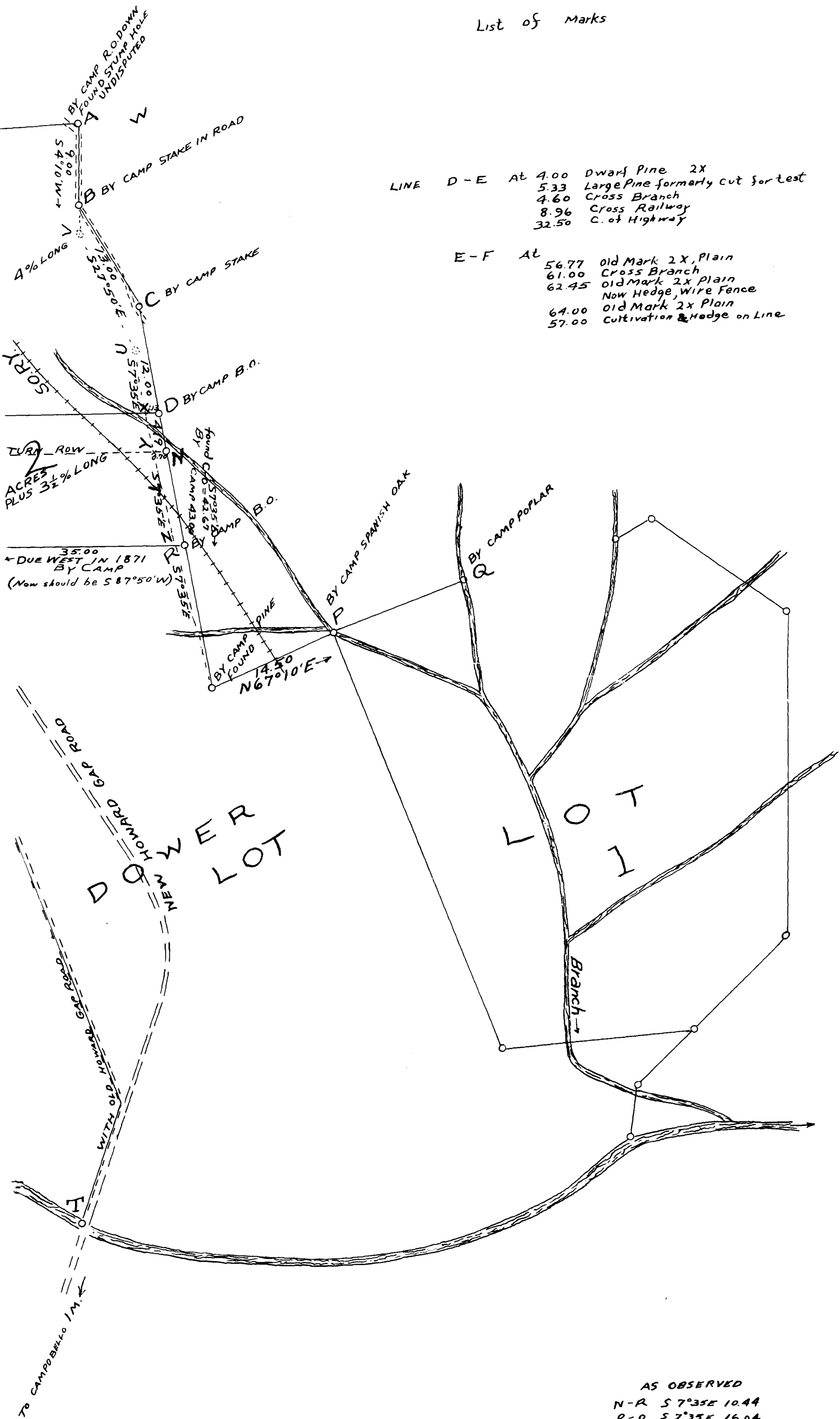
INDIVIDUAL REPORT  
OF  
H. STRIBLING, C. E.  
APPOINTED COURT SURVEYOR WITH M. E. JOHNSON  
DEC. 7, 1926

SCALE 1 INCH = 10 CHAINS.

List of Marks

LINE D-E At 4.00 Dwarf Pine 2x  
 5.33 Large Pine formerly cut for test  
 4.60 Cross Branch  
 8.96 Cross Railway  
 32.50 C. of Highway

E-F At 56.77 Old Mark 2x, Plain  
 61.00 Cross Branch  
 62.45 Old Mark 2x Plain  
 Now Hedge, Wire Fence  
 64.00 Old Mark 2x Plain  
 57.00 Cultivation & Hedge on Line



AS OBSERVED  
 N-R S 7° 35' E 10.44  
 R-O S 7° 35' E 16.04

Registered, Certified, and Examined Aug 3-1927 at 4:29 P.M.