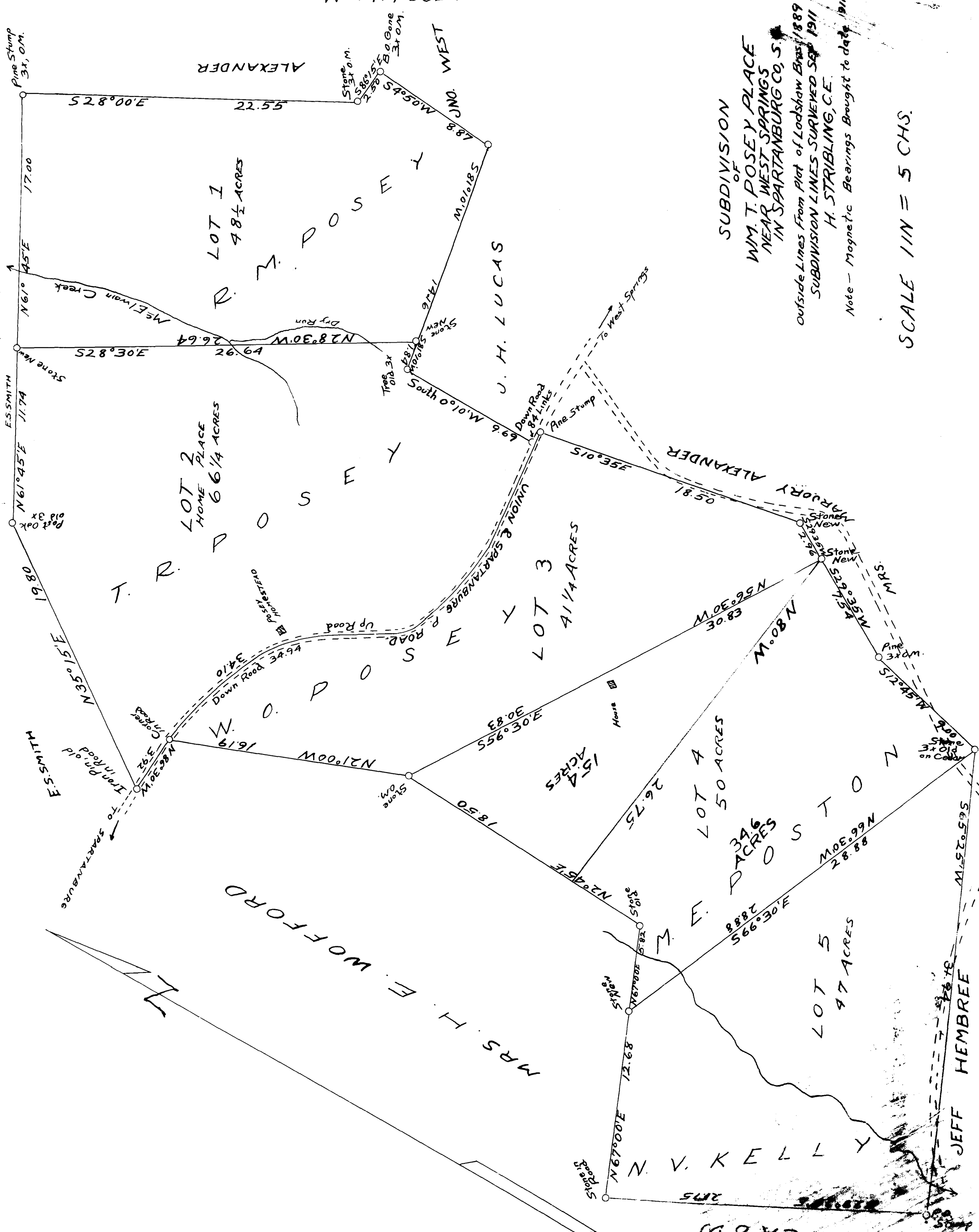


Ex Parte
WM. T. POSEY



SUBDIVISION
OF
WM. T. POSEY PLACE
NEAR WEST SPRINGS
IN SPARTANBURG CO., S.
Outside Lines From Plat of Lodshaw Brass, 1889
SUBDIVISION LINES SURVEYED SEP 1911
H. STRIBLING, C.E.

Note - Magnetic Bearings Brought to date 1911

SCALE 1 IN = 5 CHS.

Registered, Certified, and Examined Aug 12-1927 at 11:52 A.M.