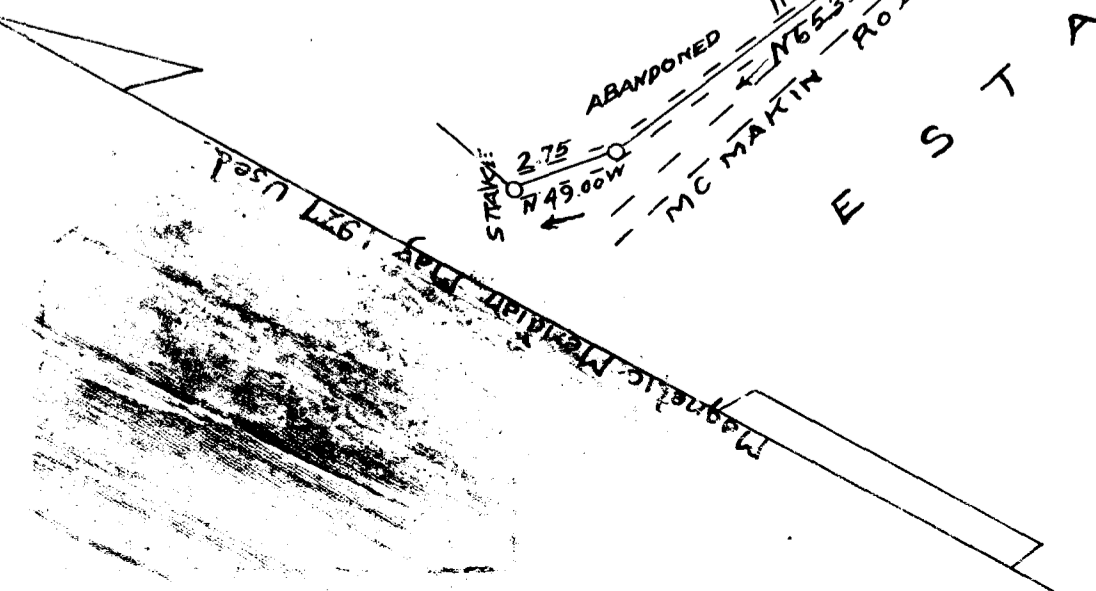


note: see page 7

note: see page 7 for balance of last no. 1

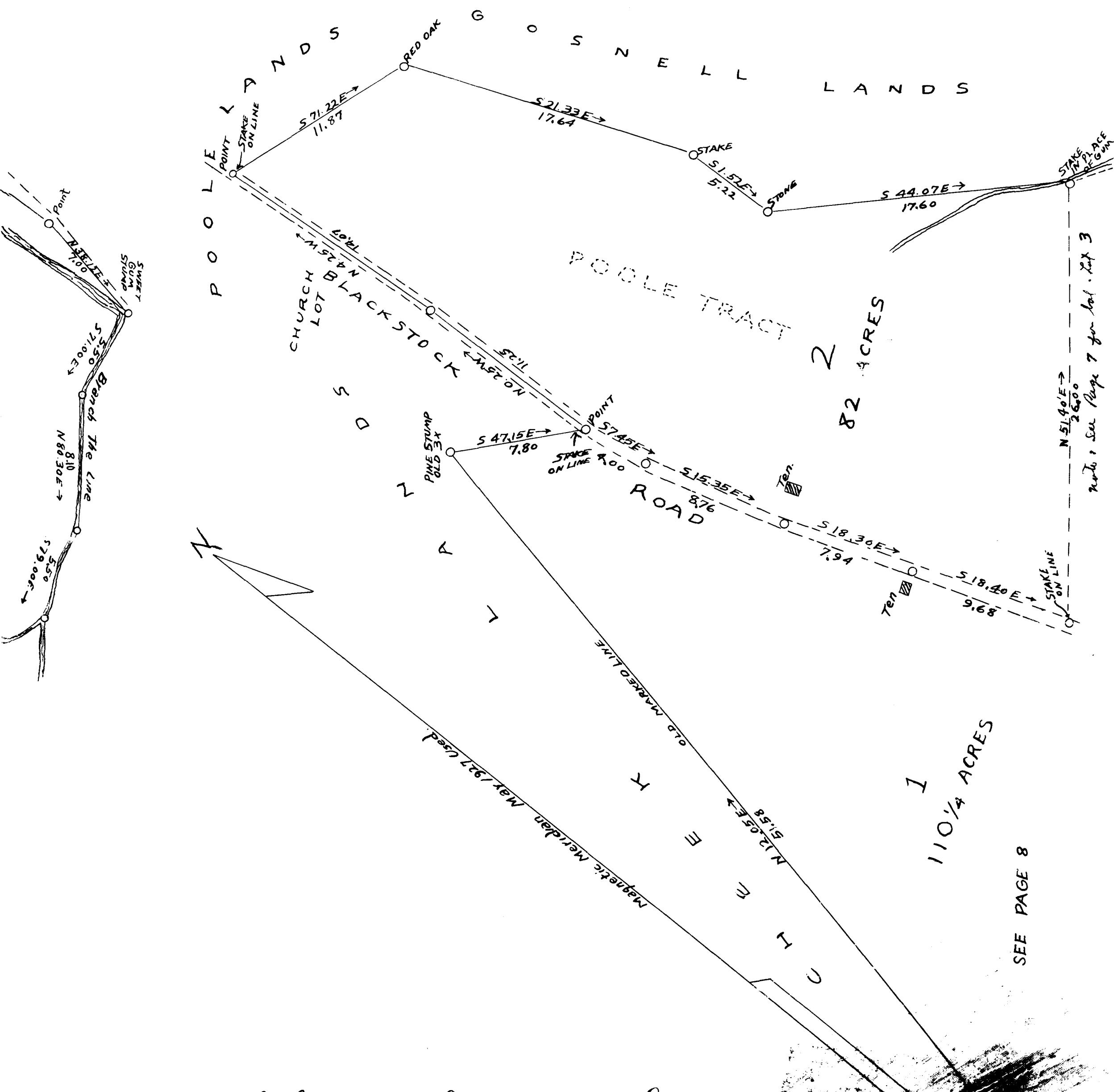
SEE PAGE 7

SURVEY  
 OF  
 ESTATE OF PERRY E. CHA  
 HOME TRACT  
 AT MT. ZION CHURCH  
 SPARTANBURG CO.,  
 MAY 12, 1927  
 H. STRIBLING, C.E.  
 Scale 1 inch = 5 chains



EX PARTE  
PERRY E. CHAPMAN EST.

(Stake 1/15 to 20)



note: see Page 7 for lot 3

1  
110 1/4 ACRES

SEE PAGE 8

Registered, Certified, and Examined Sept 1-1927 at