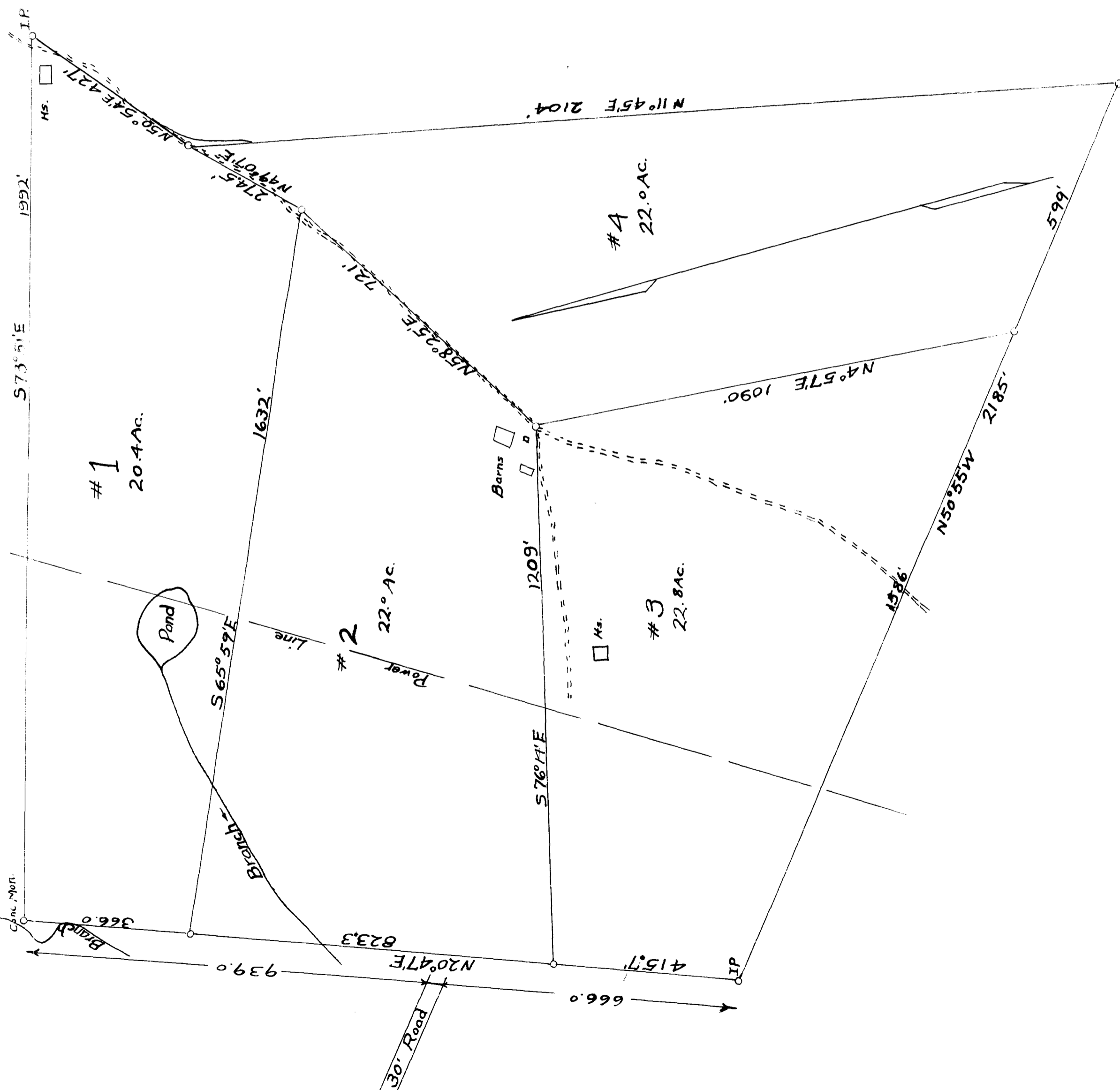


Ex Parte
H.Z. TAYLOR

PROPERTIES OF
H.Z. TAYLOR
NEAR
EAST SPARTANBURG
SPARTANBURG Co.
SOUTH CAROLINA
Scale 1"=200' 6-10-24.

W.W. Willis Engr.
Spartanburg, S.C.



Registered, Certified, and Examined Oct. 7-1927 at 11:30 A.M.