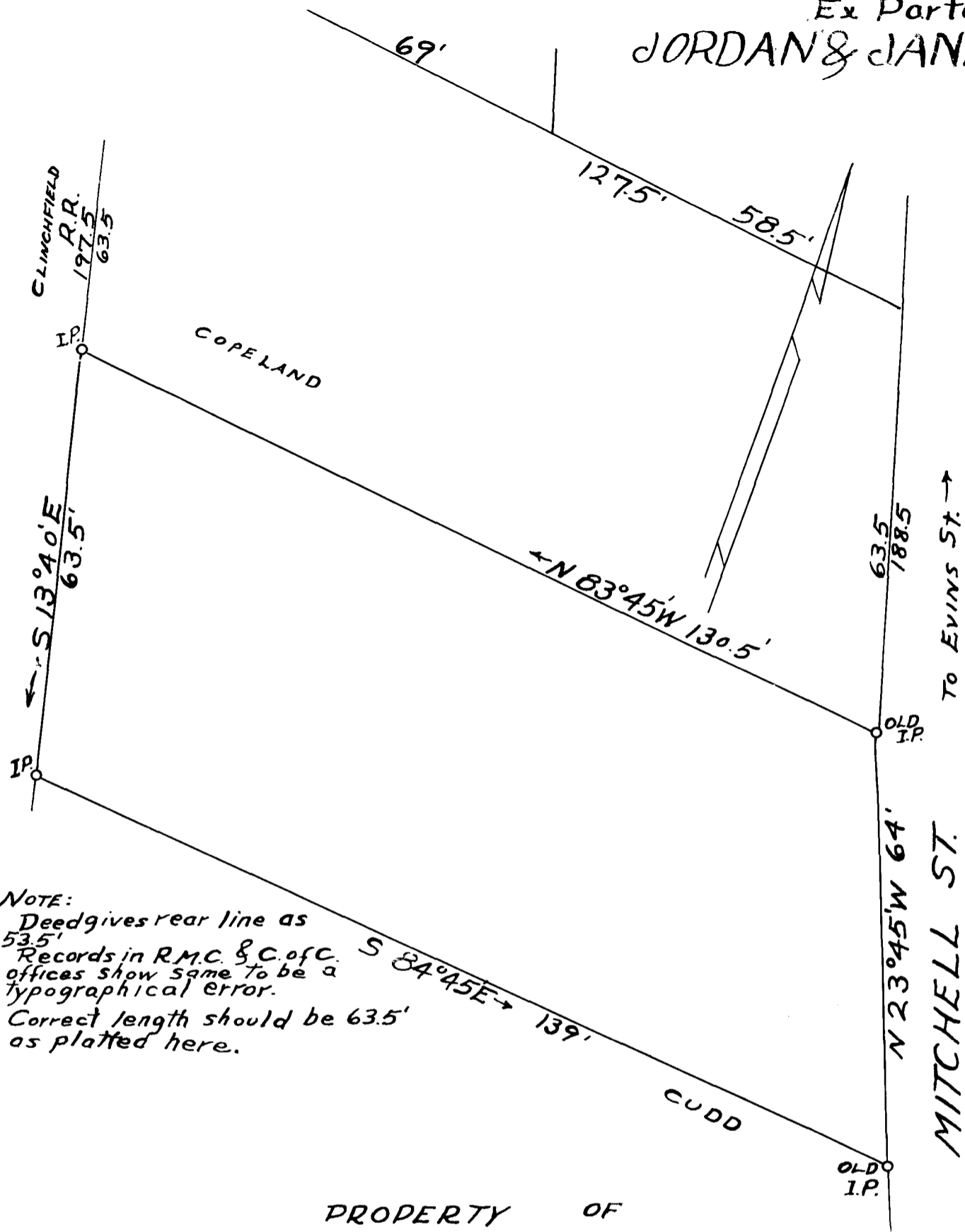


Ex Parte
JORDAN & JANIE McCLURE

18



NOTE:
 Deed gives rear line as
 53.5'
 Records in R.M.C. & C. of C.
 offices show same to be a
 typographical error.
 Correct length should be 63.5'
 as platted here.

PROPERTY OF
JORDAN & JANIE McCLURE
 IN THE CITY OF
SPARTANBURG, S.C.
 SCALE 1" = 20' SEPT. 13, 1927
 W.N. WILLIS ENGINEERS
 SPARTANBURG, S.C.

REF.
 R.M.C. 3D-779
 4S-25
 5R-774
 7L-298

Registered, Certified and Examined Oct. 22, 1927 at 10:33 A.M.