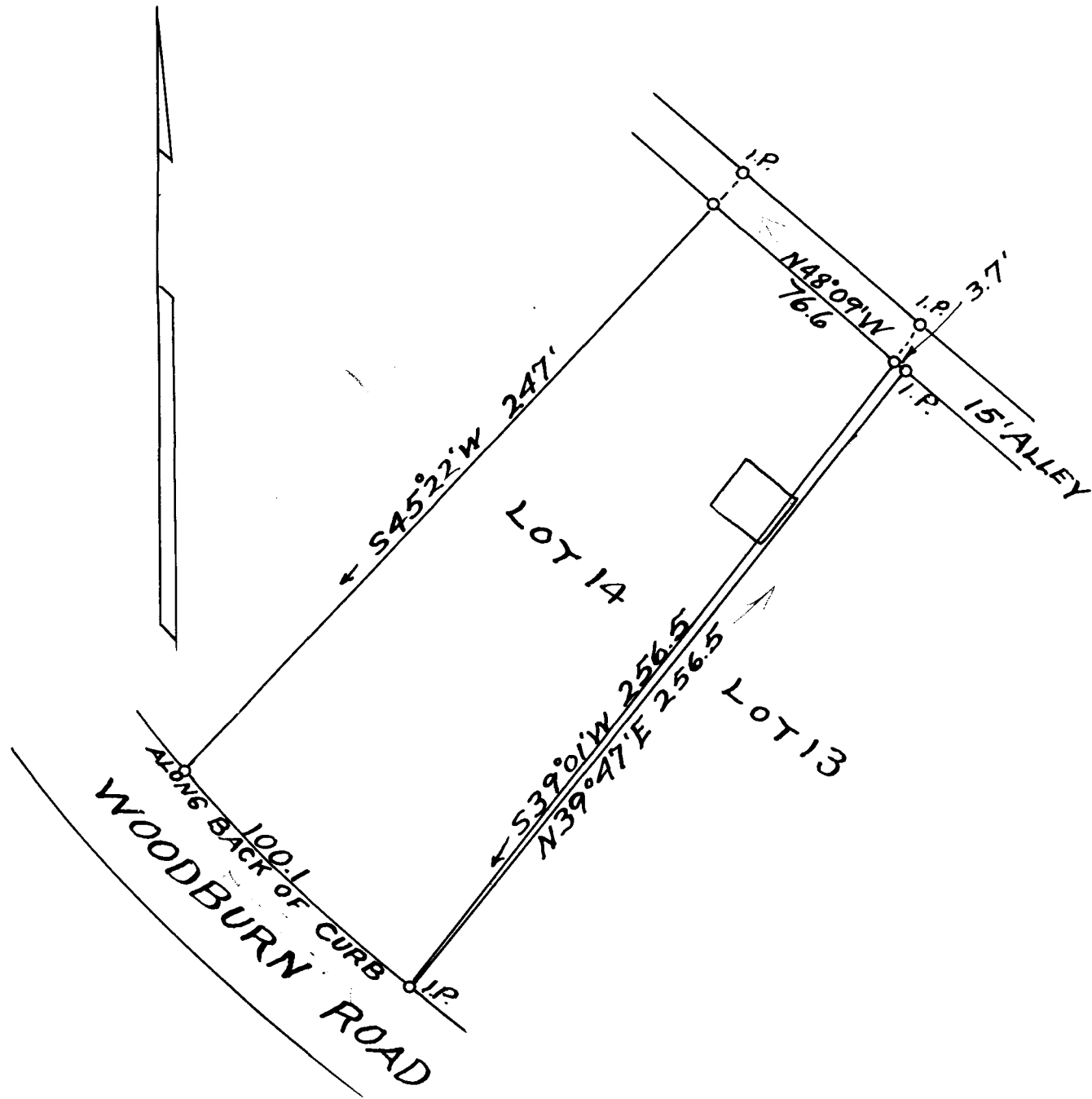


Ex Parte
W.A. WALLACE



PROPERTY OF
W.A. WALLACE
 AT THE CORPORATE LIMITS OF
SPARTANBURG, S.C.
 SCALE 1" = 50' AUG. 3, 1927
 W.N. WILLIS ENGINEERS
 SPARTANBURG, S.C.

REF.
 RMC. PB-9. 110
 F.C.W.

Registered, Certified and Examined Oct. 31-1927 at 12:33 P.M.