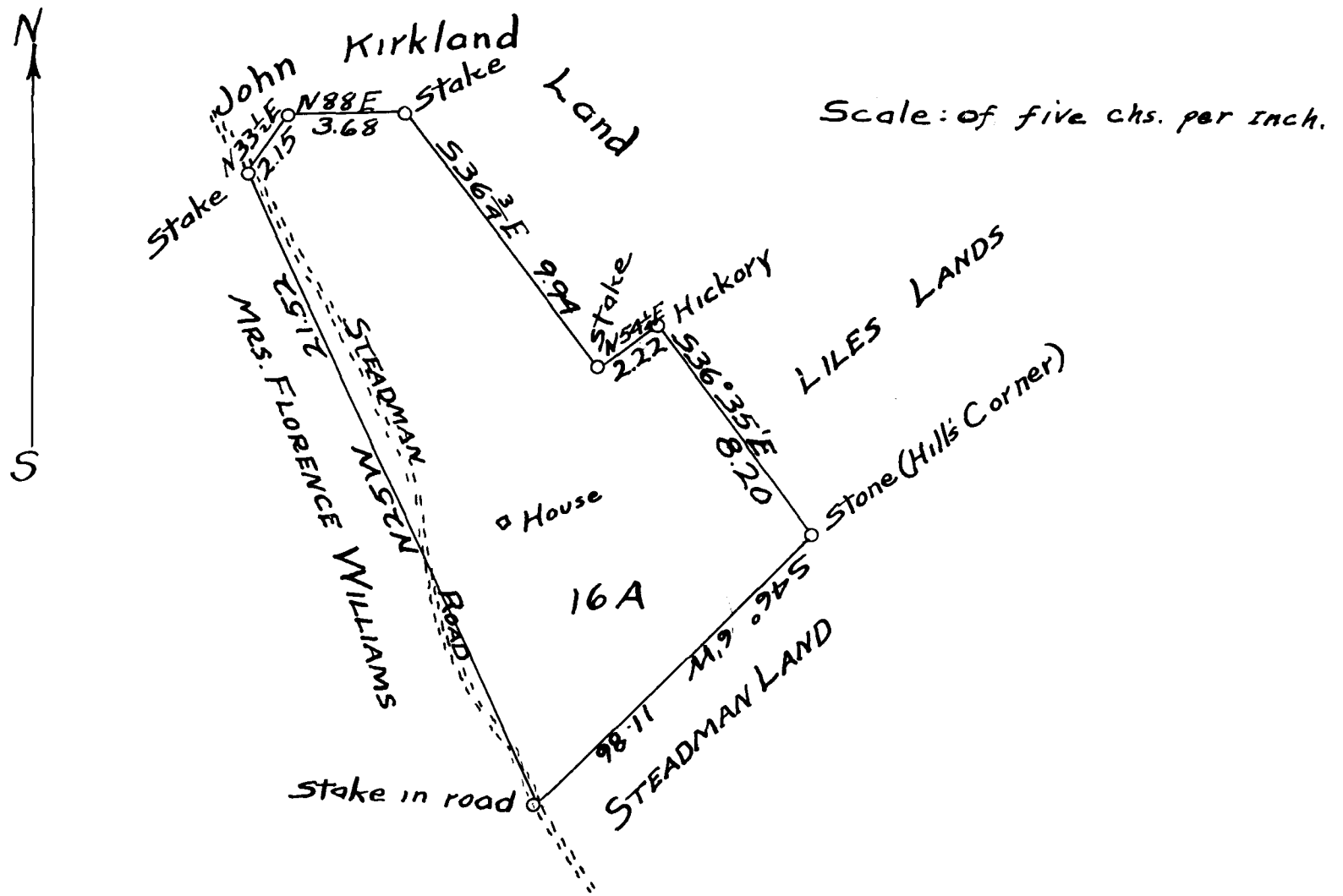


EX PARTE
JAMIE H. WILLIAMS



State of South Carolina }
 Spartanburg County } The above plat correctly represents a lot of land
 deeded about Jan. 1910 by Mrs. Florence Williams to Jamie H. Williams
 It is situated in above state and county and lies wholly or partly within the
 corporate limits of Landrum. Surveyed by me ending Jan. 13, 1910.

M.E. Johnson.

Registered, Certified, and Examined Nov. 1-1927 at 9:48 A.M.