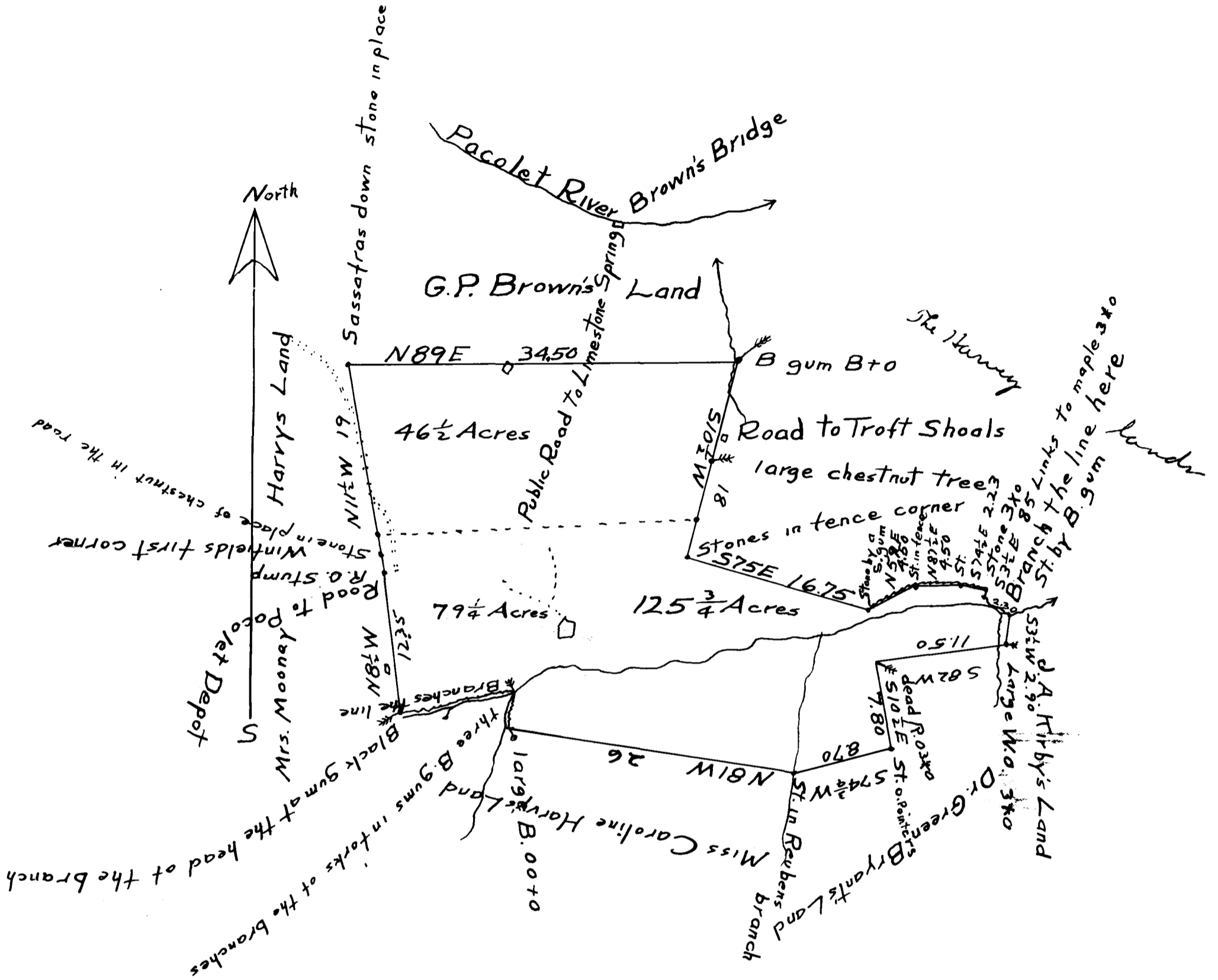


EX PARTE  
WINFIELD BROWN



State of South Carolina  
Spartanburg County

The above plat represents 125 <sup>3</sup>/<sub>4</sub> acres of land situated in the state and county above mentioned on both sides the new cut road leading from Pacolet Depot on the Spartanburg & Union R.R. Road to Brown's Bridge and Mills on Pacolet River and on branch waters of Pacolet River; and hath such form, metes and bounds as the above plat represents. Resurveyed for G.P. Brown to Winfield Brown the 13<sup>th</sup> day of July 1880

By J.F. Sloan Surveyor  
Pacolet Depot, S.C.

Registered, Certified, and Examined Nov. 29 - 1927 at 10:10 A.M.