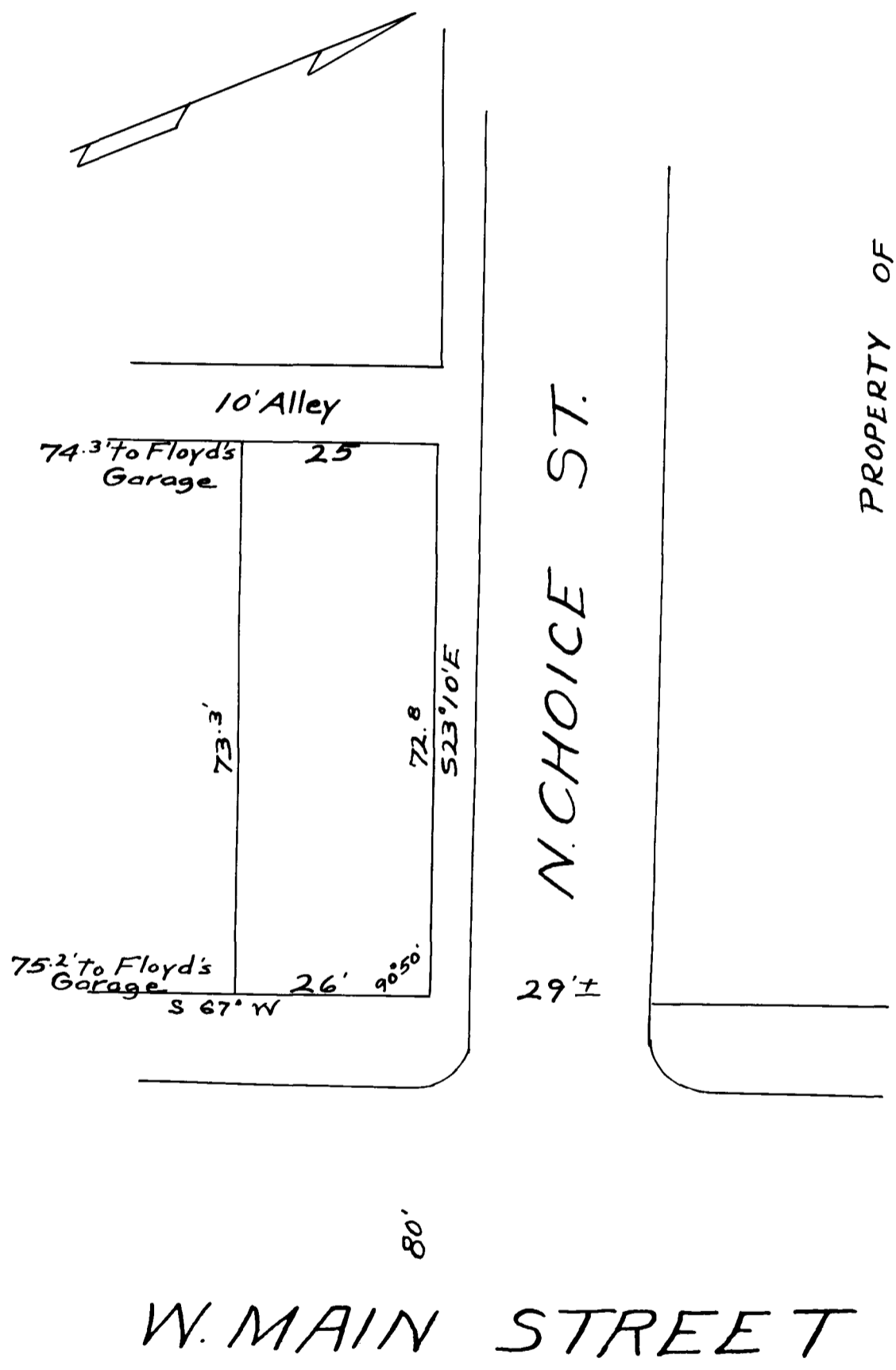


Ex Parte
CITY OF SPARTANBURG



PROPERTY OF
 CITY OF SPARTANBURG
 SOUTH CAROLINA
 Scale 1" = 20'
 D. G. Adams
 City Engr.

Dec. 8-1927
 W. N. Willis
 Con. Engr.

Registered, Certified and Examined Dec. 19-1927 at 11:42 A.M.