

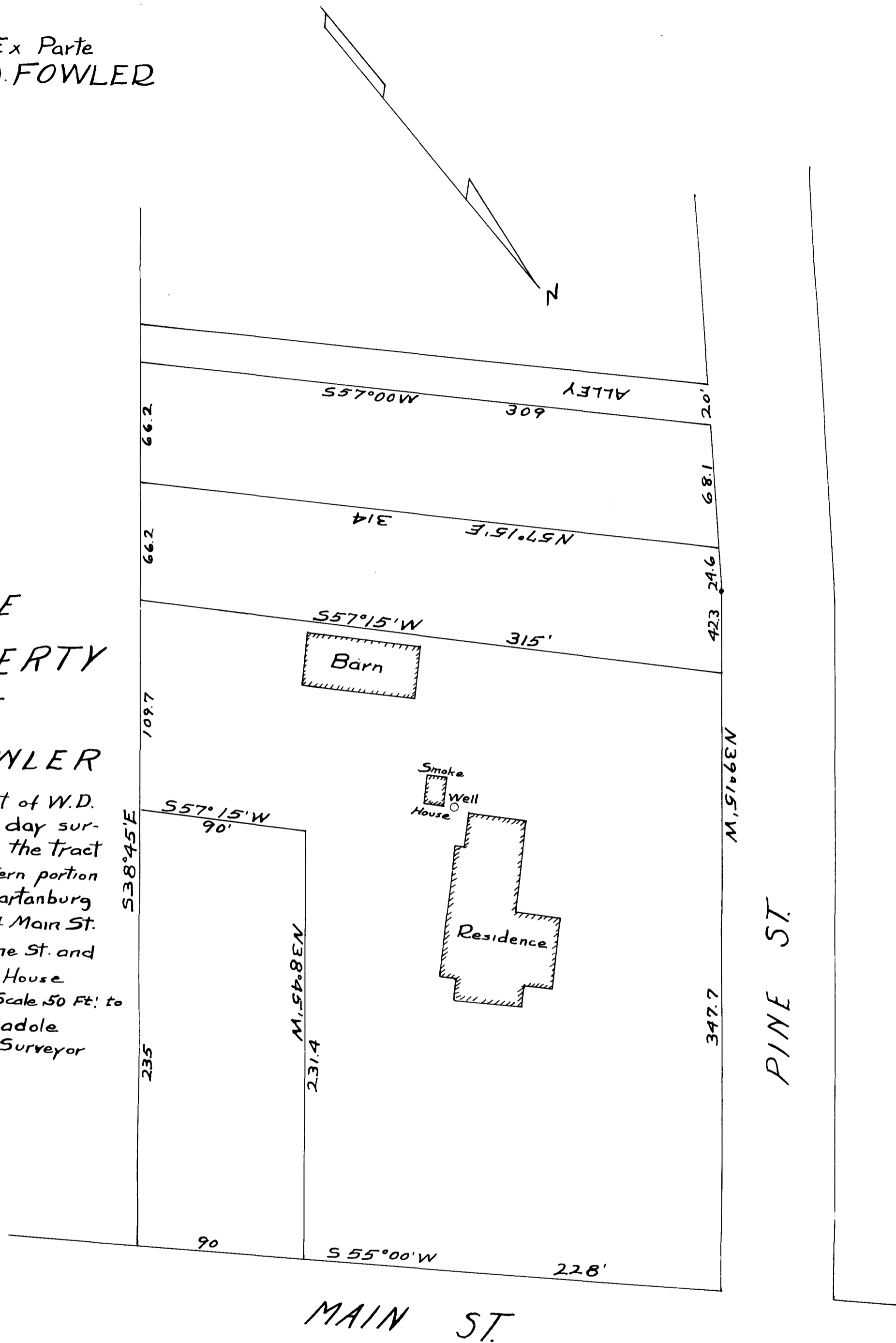
Ex Parte
W.D. FOWLER

THE
PROPERTY
OF

W. D. FOWLER

By the request of W.D. Fowler I have this day surveyed and subdivided the tract of land in the eastern portion of the city of Spartanburg on the south side of Main St. and east side of Pine St. and known as the Rock House property Jan. 9, 1899. Scale 50 Ft. to Inch.

A. Madole
Surveyor



THE
PROPERTY
OF

W. D. FOWLER

By the request of W.D. Fowler I have this day surveyed and subdivided the tract of land in the eastern portion of the city of Spartanburg on the south side of Main St. and east side of Pine St. and known as the Rock House property Jan. 9, 1899. Scale 50 Ft. to Inch.

A. Madole
Surveyor

I hereby certify that the above plat is a true and correct copy of plat by A. Madole dated Jan. 9, 1899. This plat copied from blue print Oct. 25, 1927.
Sworn to before me this the 25 day of Oct. 1927
D.D. Sanders
N.P. for S.C.

Aiken R. Carlisle

Registered, Certified, and Examined Dec. 20, 1927 at 1:13 P.M.