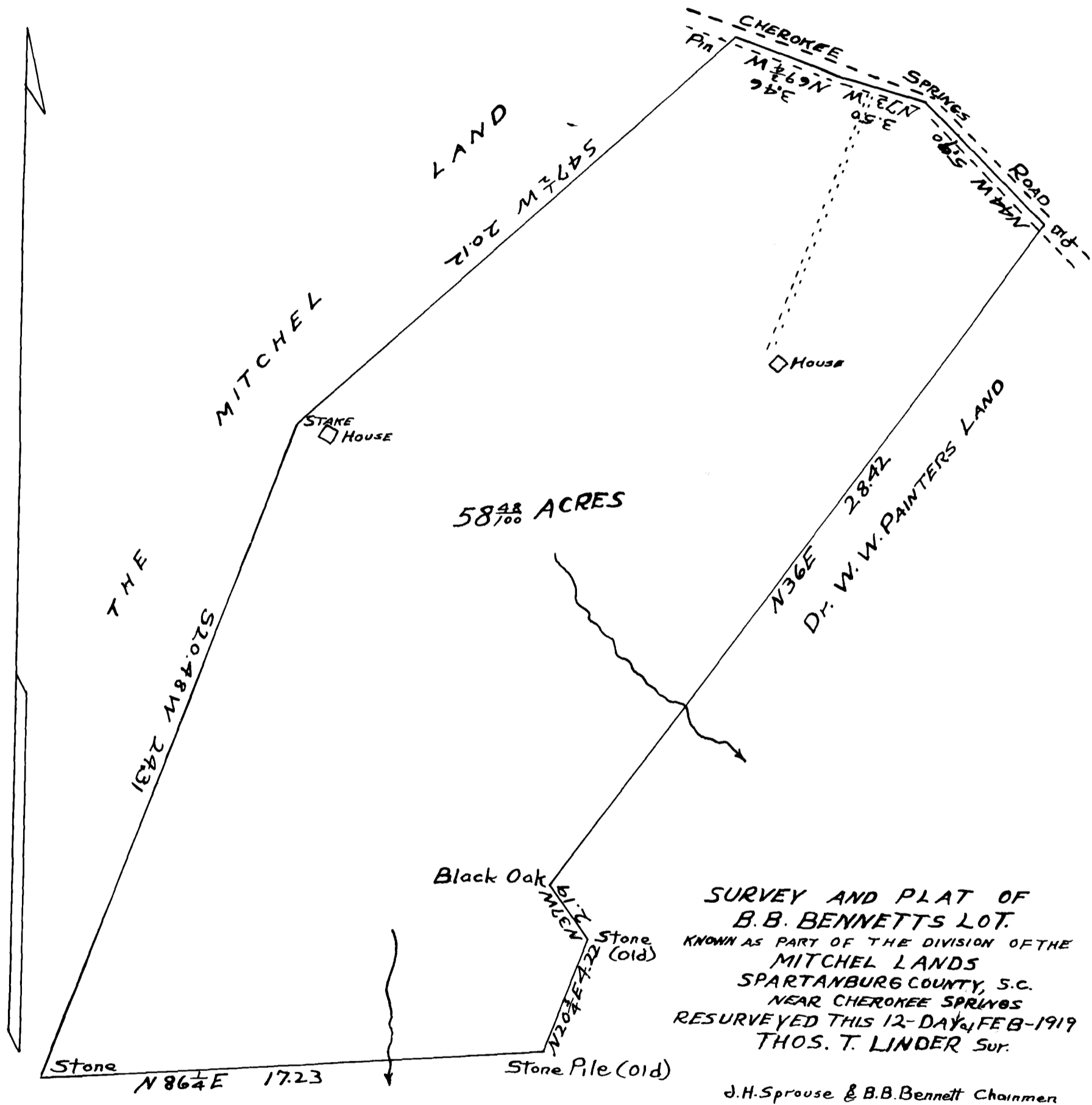


Ex Parte
B.B. BENNETT



SURVEY AND PLAT OF
 B. B. BENNETTS LOT.
 KNOWN AS PART OF THE DIVISION OF THE
 MITCHEL LANDS
 SPARTANBURG COUNTY, S. C.
 NEAR CHEROKEE SPRINGS
 RESURVEYED THIS 12-DAY OF FEB-1919
 THOS. T. LINDER SUR.

J. H. Sprouse & B. B. Bennett Chairmen

Registered, Certified, and Examined Dec. 21-1927 at 1:25 P.M.