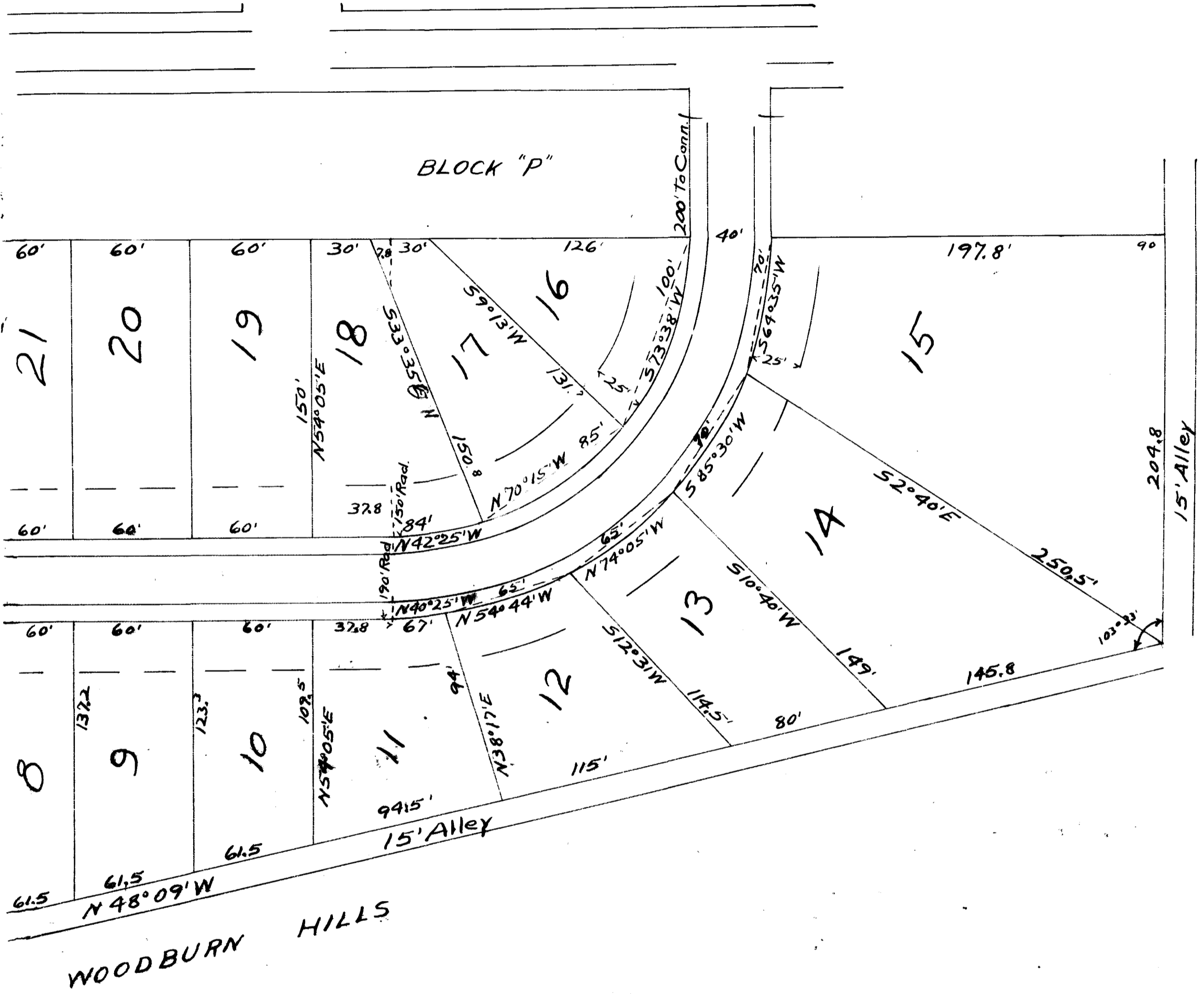


Ex Parte
P. S. MINUS



SOUTH FAIRVIEW AVENUE ADDITION

SUBDIVISION FOR
P. S. MINUS
in the City of
SPARTANBURG
SPARTANBURG CO., S.C.
Scale 1" = 50' Feb 18, 1928

W. N. Willis Engrs
Spartanburg S.C.

Registered, Certified, and Examined Feb 24, 1928 at 9:30 A.M.

