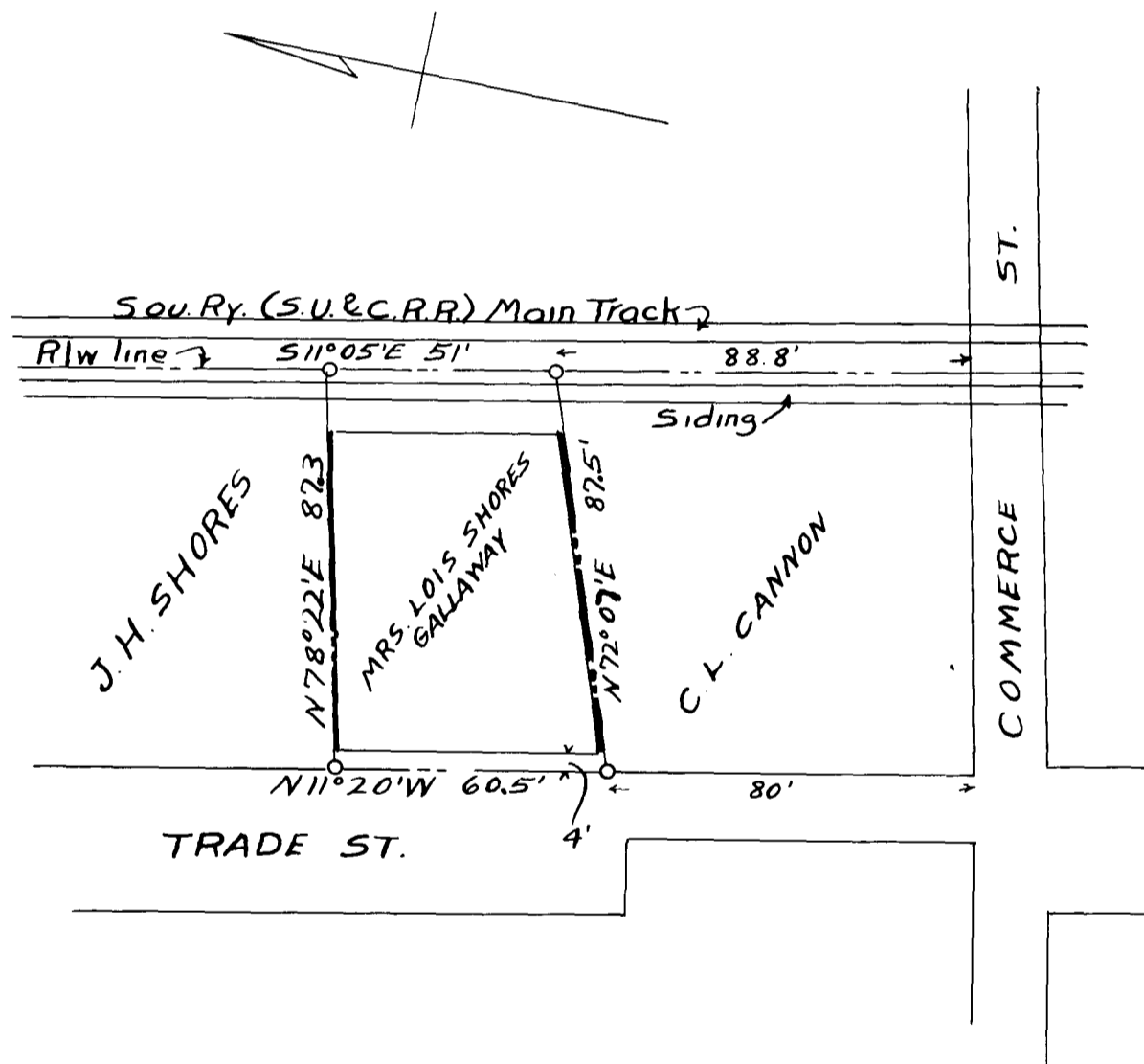


Ex Parte  
MRS. LOIS SHORES GALLAWAY



PROPERTY OF  
MRS. LOIS SHORES GALLAWAY  
IN THE CITY OF  
SPARTANBURG, S. C.

Scale 1" = 40'

H. Beebe  
Engineer

April 1923.

Registered, Certified, and Examined Mar 27, 1928 at 1:15 P.M.