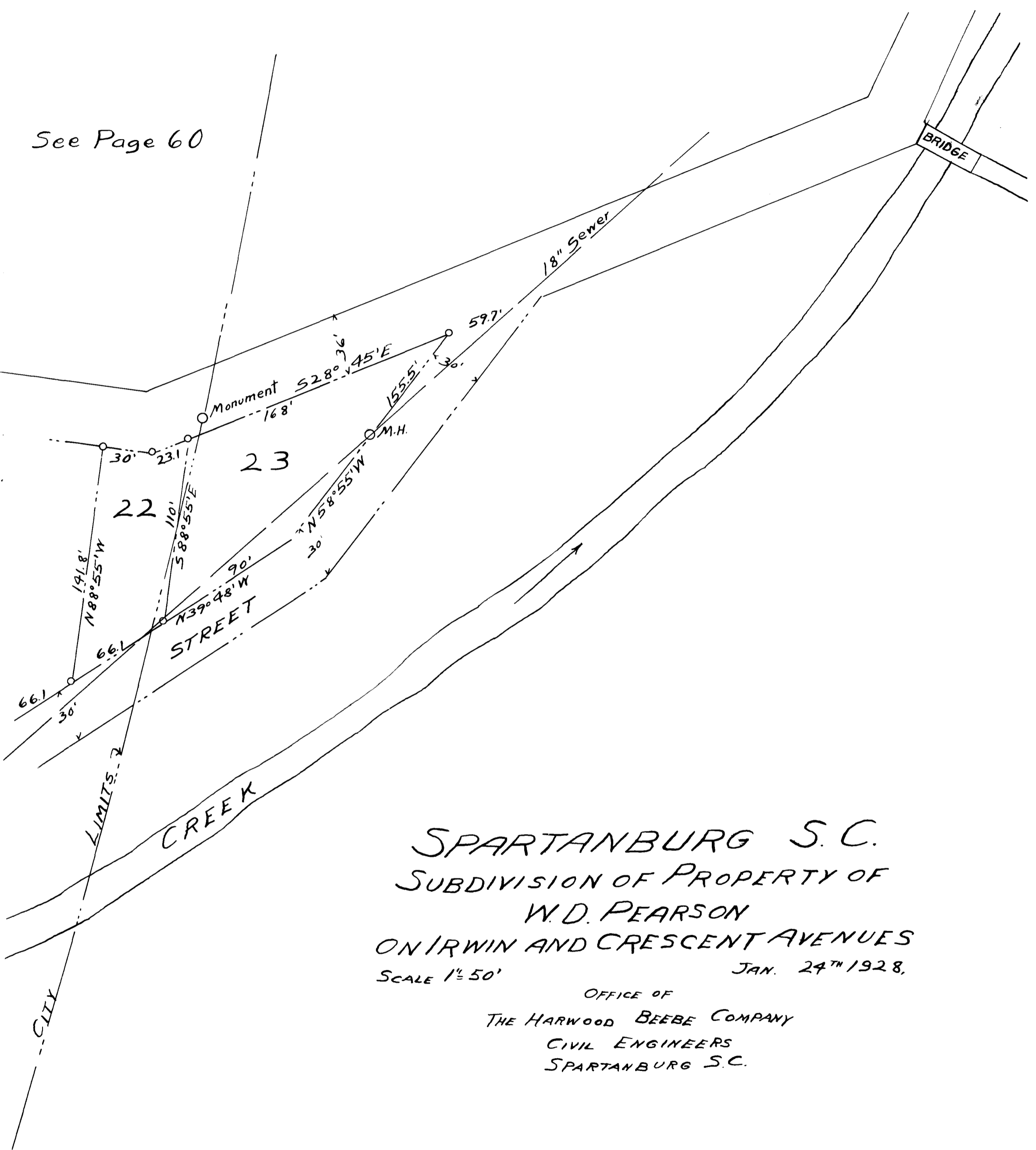


Ex Parte
W.D. PEARSON

See Page 60



SPARTANBURG S.C.
 SUBDIVISION OF PROPERTY OF
 W.D. PEARSON
 ON IRWIN AND CRESCENT AVENUES
 SCALE 1" = 50' JAN. 24TH 1928.

OFFICE OF
 THE HARWOOD BEEBE COMPANY
 CIVIL ENGINEERS
 SPARTANBURG S.C.

Registered, Certified, and Examined April 11, 1928 at 9:43 A.M.