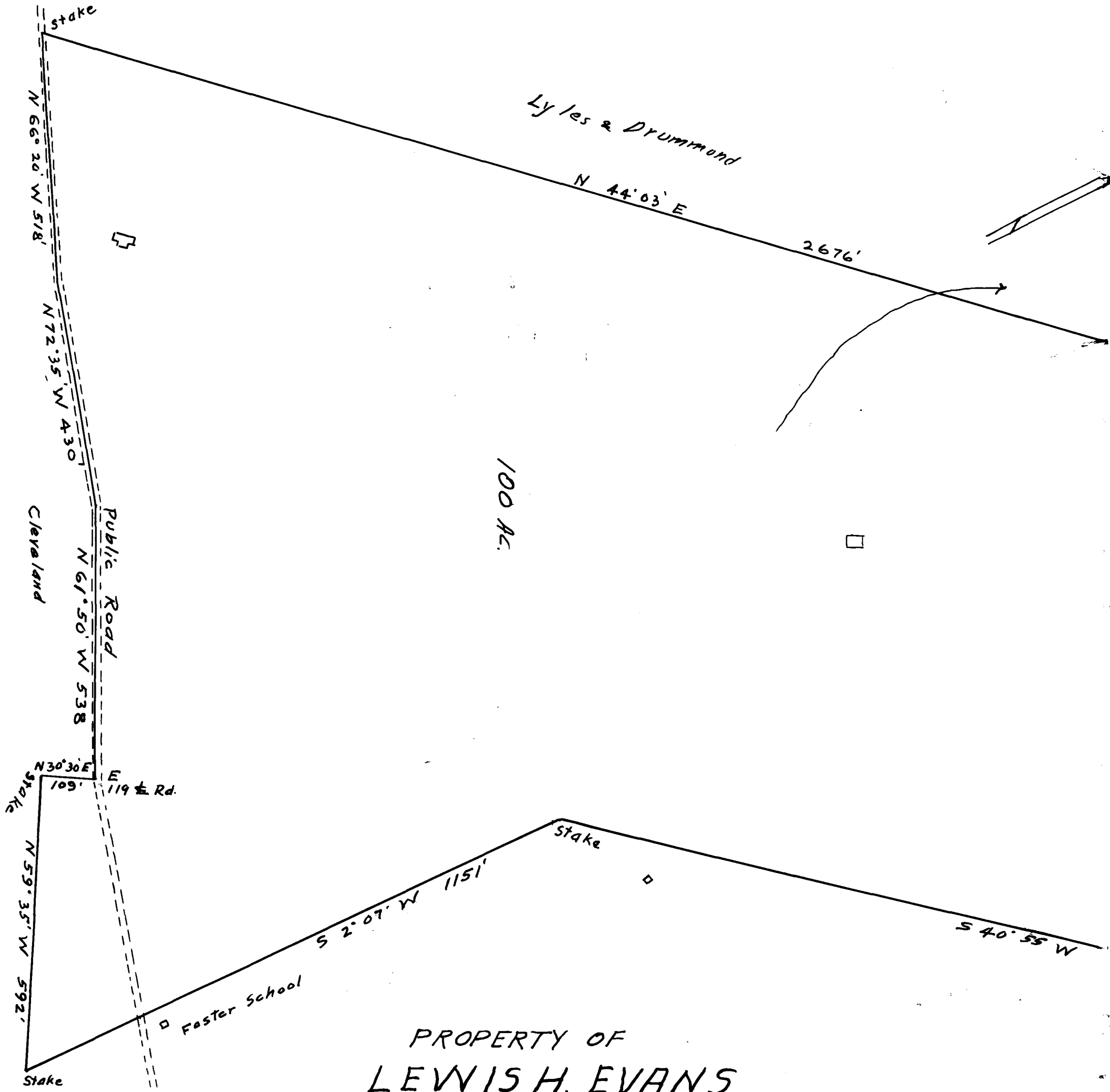


65

EX PARTE  
LEWIS H. EVANS



PROPERTY OF  
**LEWIS H. EVANS**  
Located 2 miles South of Spartanburg  
SPARTANBURG CO., SC

Scale 1" = 200'

MAR. 28, 1928

W.N. Willis ENGRS.

Registered, Certified & Examined May 9-1928 at 1:51 P.M.

