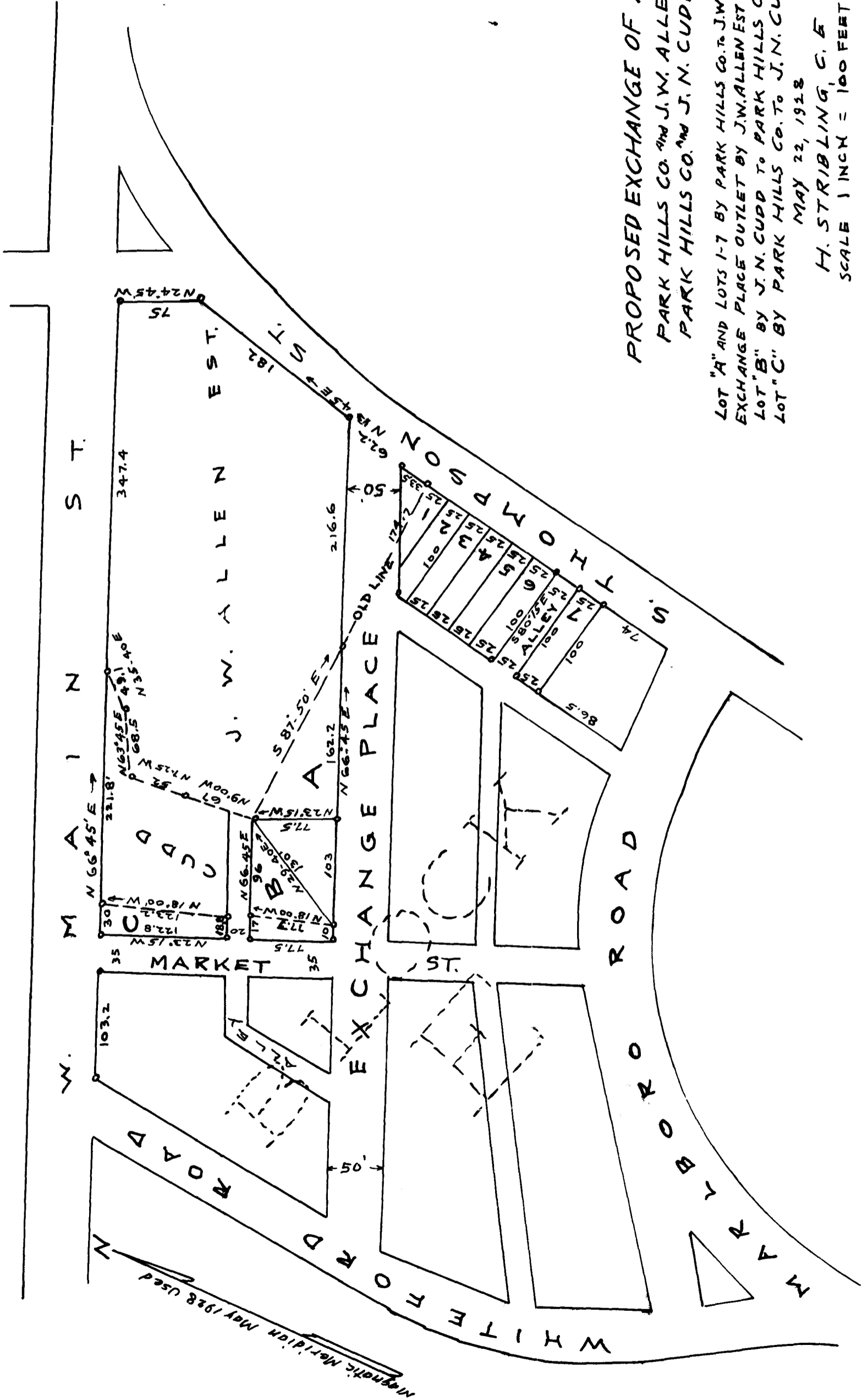


EX PARTE
J. N. CUDD
J. W. ALLEN EST.
PARK HILLS CO.



PROPOSED EXCHANGE OF AREAS
PARK HILLS CO. AND J. W. ALLEN EST.
PARK HILLS CO. AND J. N. CUDD

LOT "A" AND LOTS 1-7 BY PARK HILLS CO. TO J. W. ALLEN EST.
EXCHANGE PLACE OUTLET BY J. W. ALLEN EST. TO PARK HILLS CO.
LOT "B" BY J. N. CUDD TO PARK HILLS CO.
LOT "C" BY PARK HILLS CO. TO J. N. CUDD

MAY 22, 1928

H. STRIBLING, C. E.

SCALE 1 INCH = 100 FEET

Registered, certified & Examined June 21-1928 at 3:35 P.M.