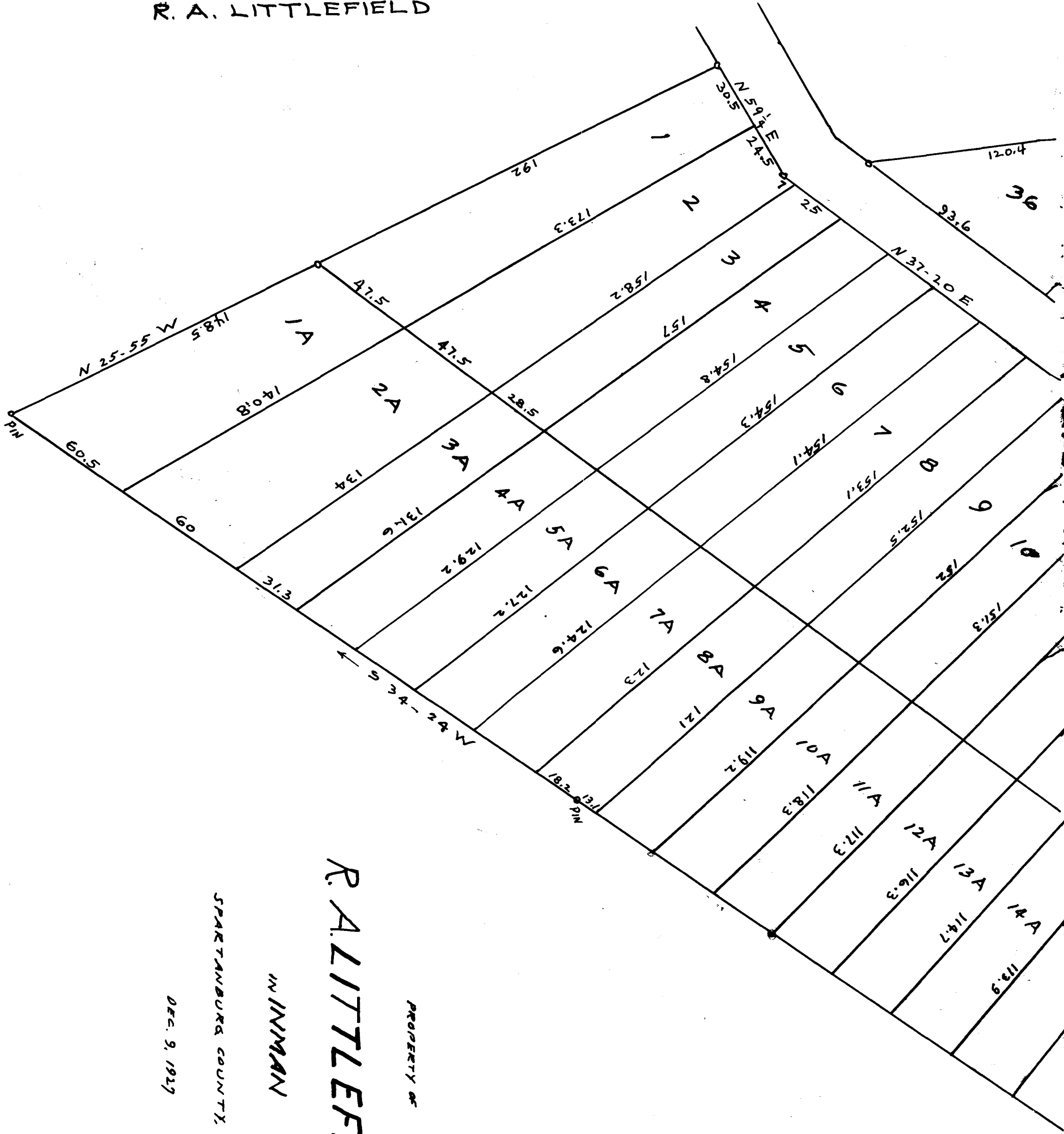


EX PARTE  
R. A. LITTLEFIELD



R. A. LITTLEFIELD

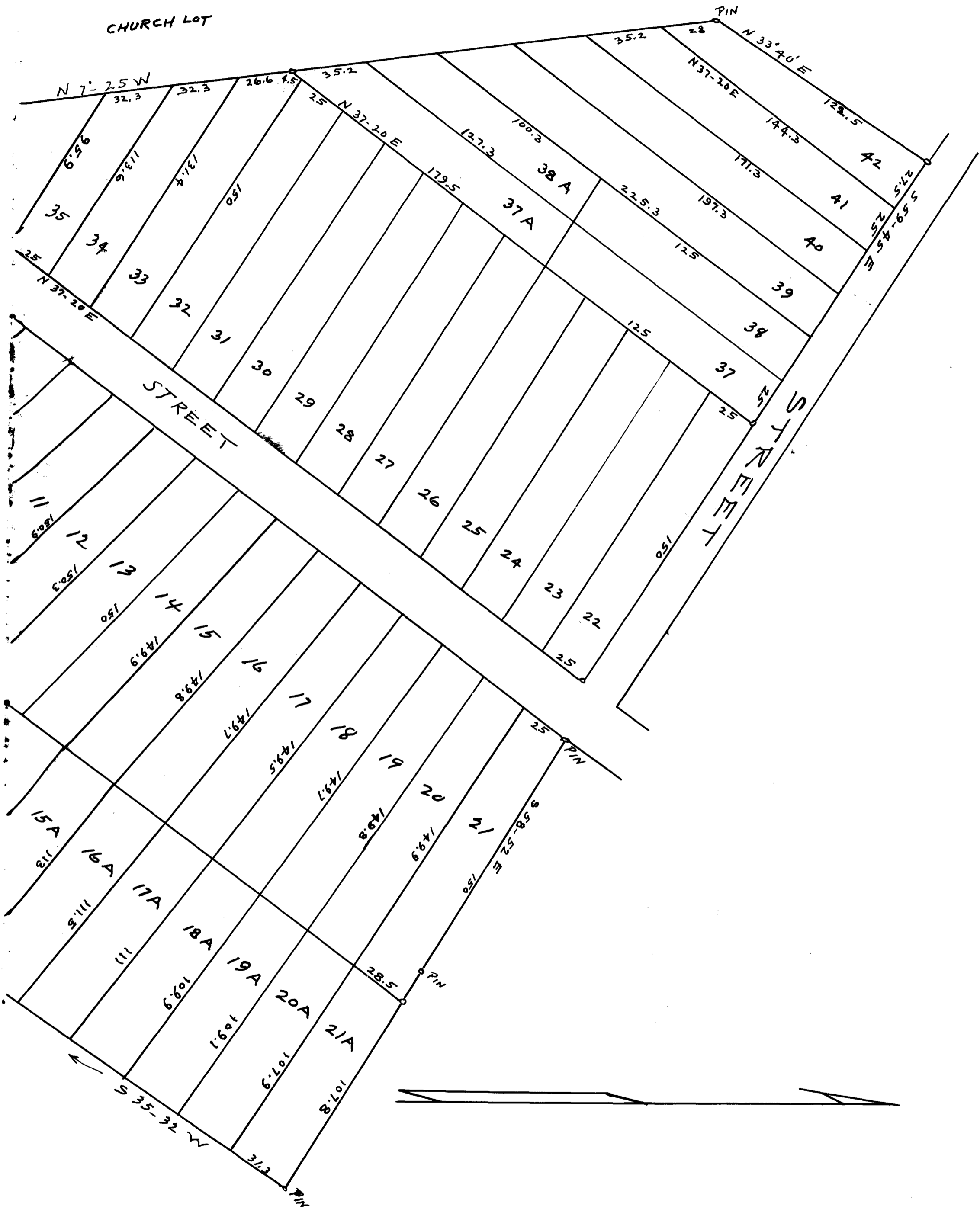
IN INMAN

SPARTANBURG COUNTY, S.C.

DEC. 9, 1917

PROPERTY OF

THOS. T. LINDEN, L.S.  
SPARTANBURG, S.C.



Registered, Certified & Examined July 23-1928 at 1:37 P.M.