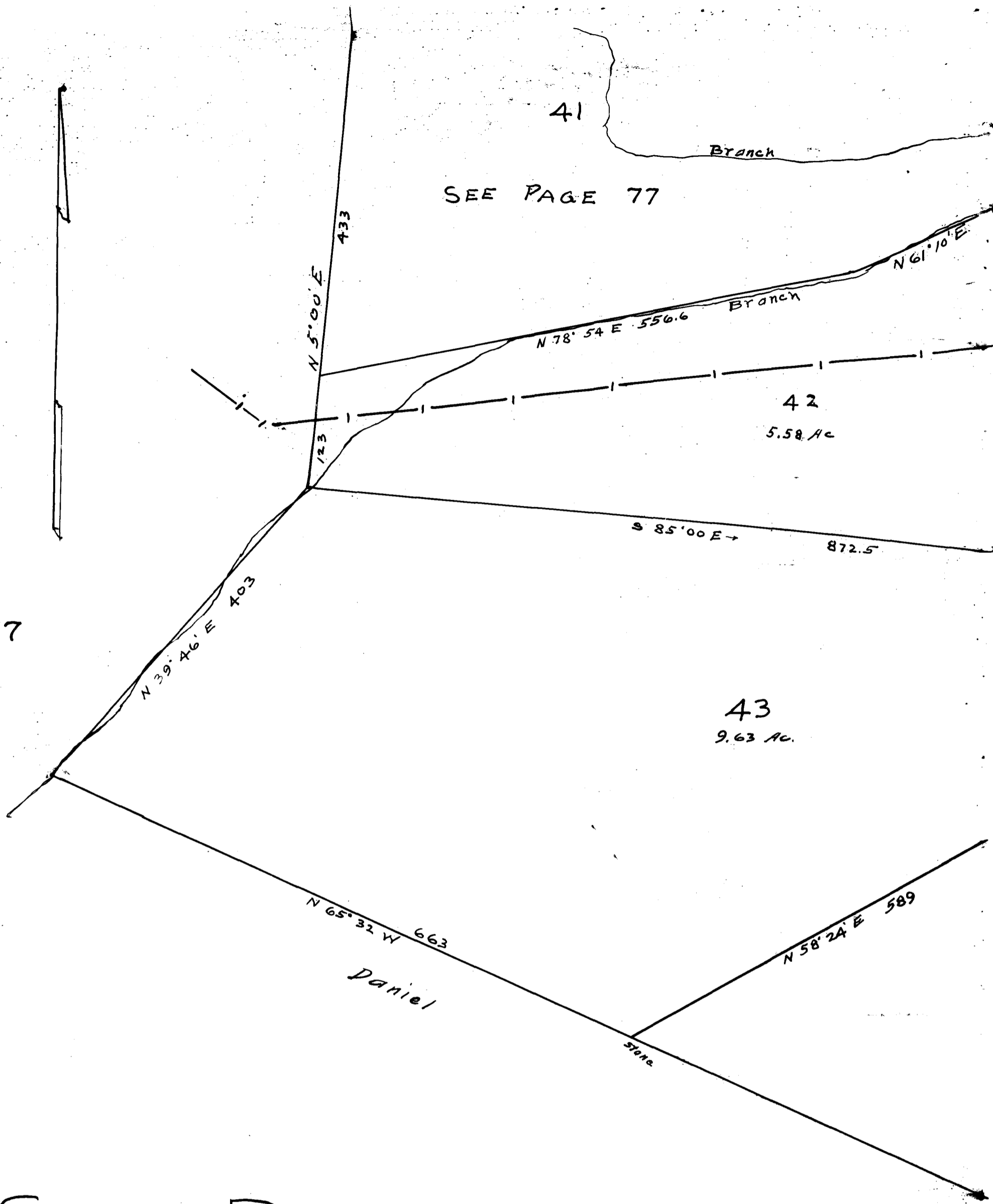


78



NOTE:  
SEE PAGE 77

# CITY PARK HEIGHTS

BOMAR & GALVERT'S HOLTZHAUSER PLACE  
ADJOINING THE CITY OF

# SPARTANBURG

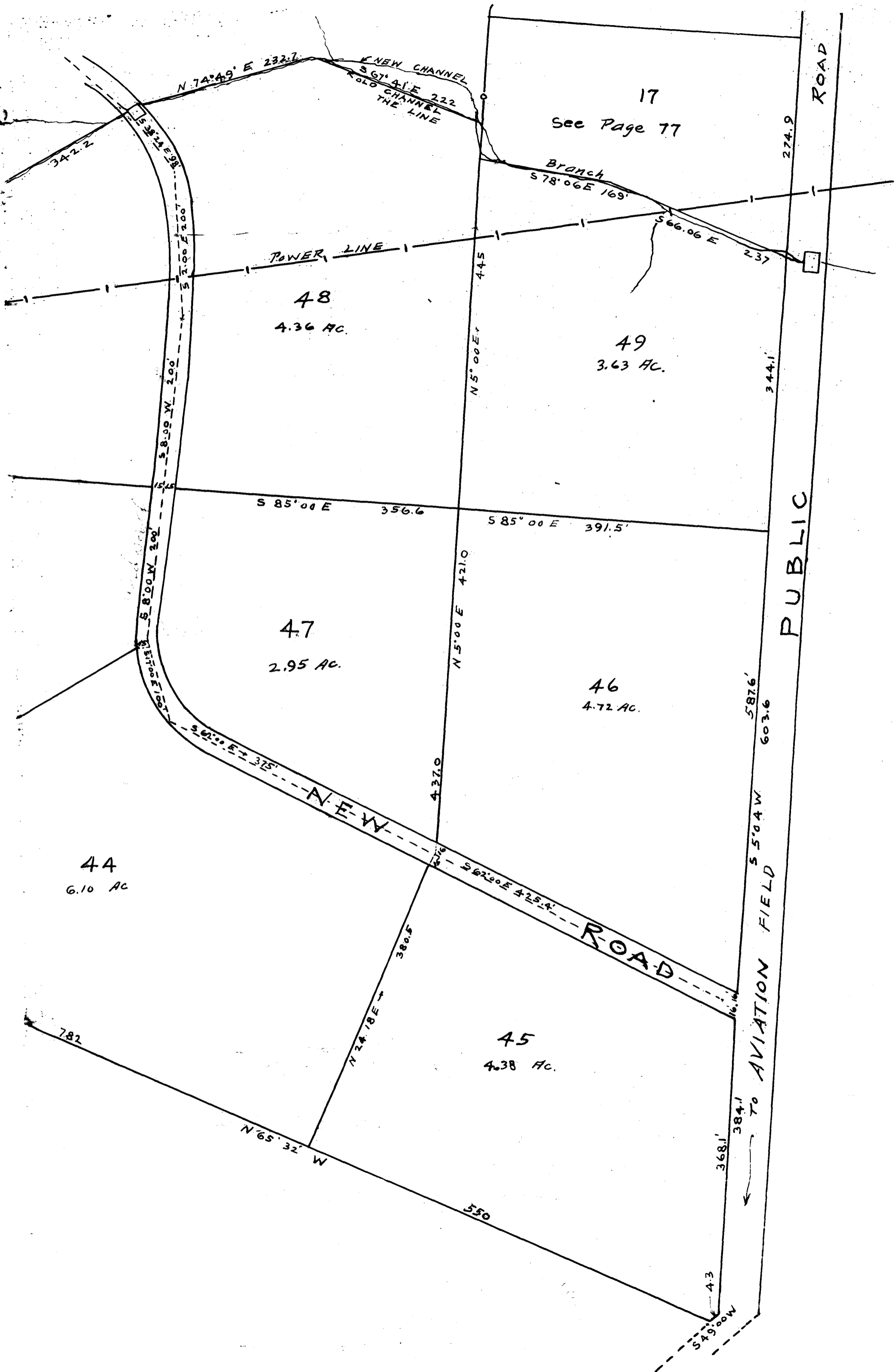
SPARTANBURG COUNTY S.C.

Subdivided for  
SOUTHERN LAND AUCTION CO  
Asheville, N.C.

SCALE 1" = 100'

JAN. 17-1916

W. N. WILLIS, CIV. ENGR. REVISED OCT. 10, 1927  
SPAR. S.C.



Registered, Certified & Examined August 1-1928 at 1:34 P.M.