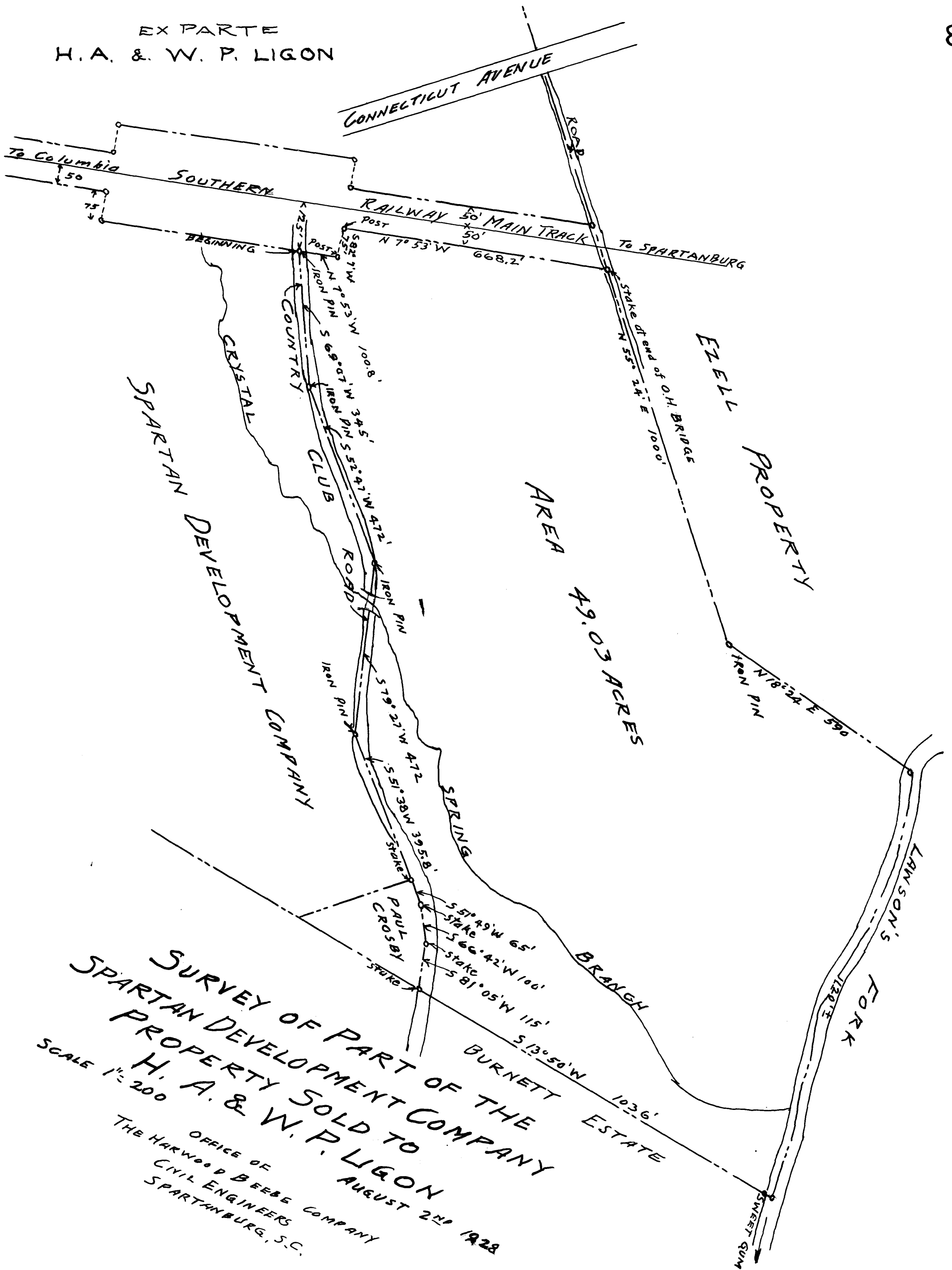


EX PARTE  
H. A. & W. P. LIGON



SURVEY OF PART OF THE  
 SPARTAN DEVELOPMENT COMPANY  
 PROPERTY SOLD TO  
 H. A. & W. P. LIGON  
 AUGUST 2ND 1928

OFFICE OF  
 THE HARWOOD BEEBE COMPANY  
 CIVIL ENGINEERS  
 SPARTANBURG, S.C.

SCALE 1" = 200'

Registered, Certified & Examined Aug. 15-1928 at 4:15 P.M.

