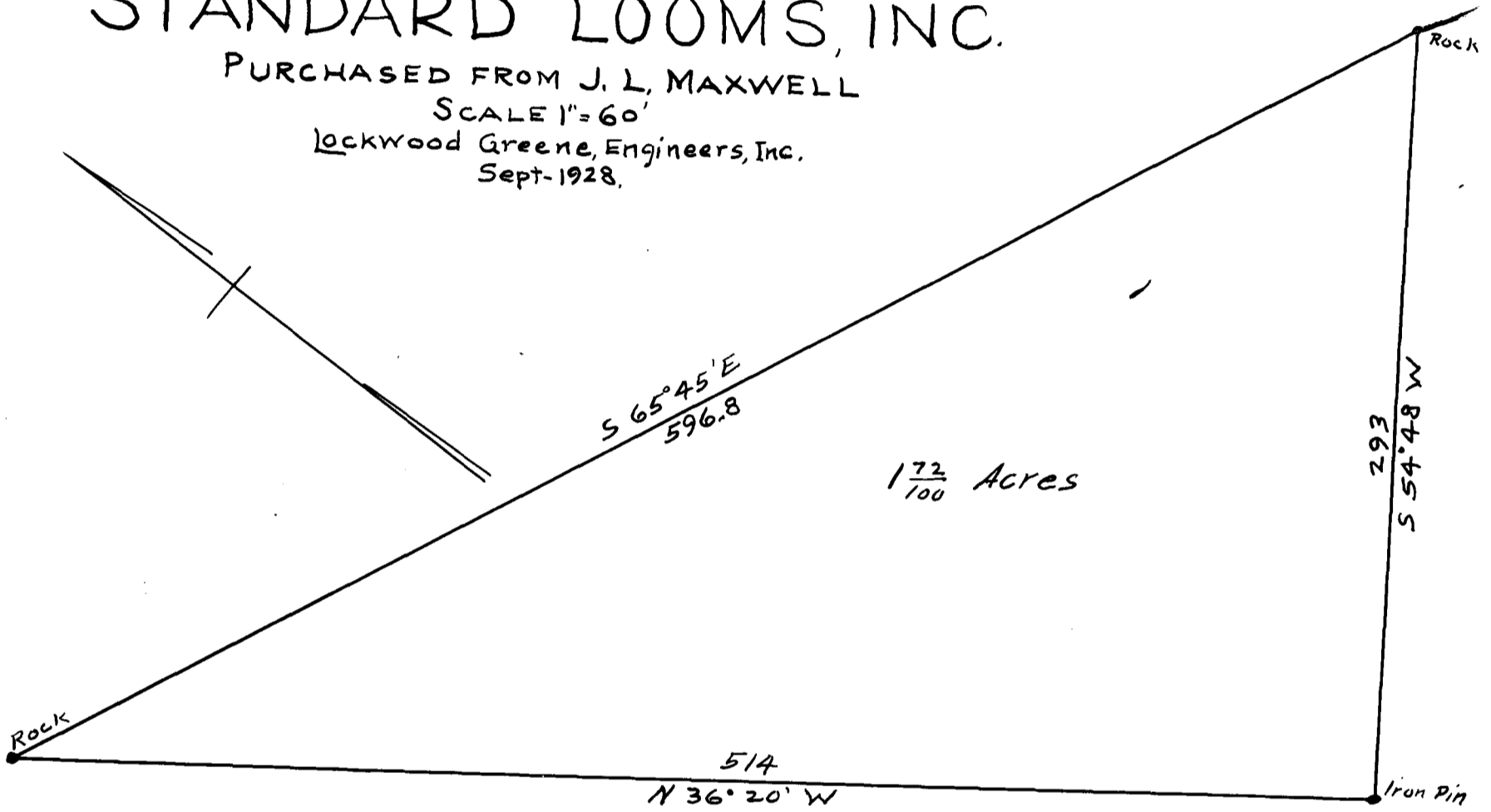


91

EX PARTE
STANDARD LOOMS INC.

PROPERTY OF
STANDARD LOOMS, INC.

PURCHASED FROM J. L. MAXWELL
SCALE 1" = 60'
Lockwood Greene, Engineers, Inc.
Sept-1928.



Registered, Certified & Examined Sept. 14-1928 at 4:27 P.M.