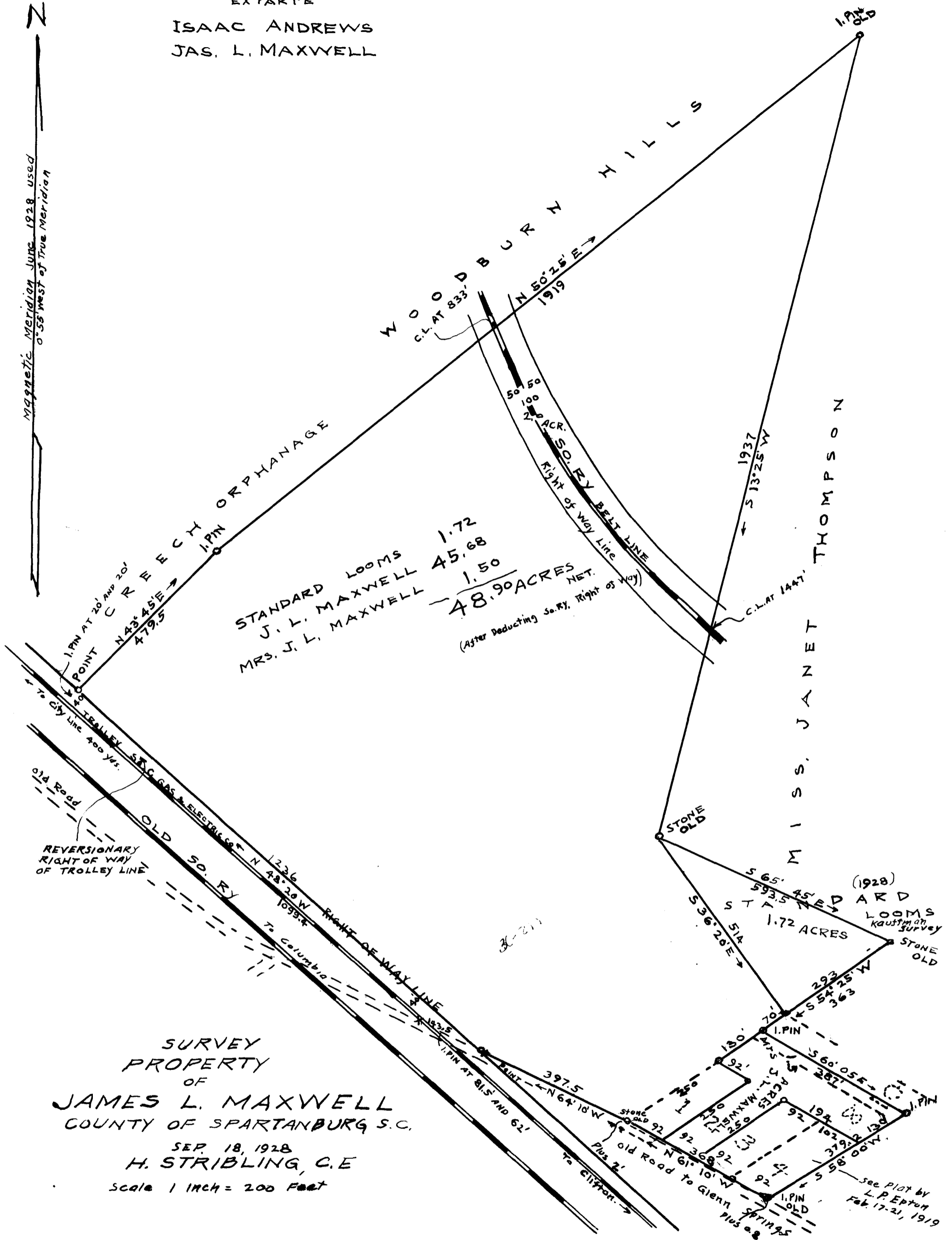


EX PARTE
ISAAC ANDREWS
JAS. L. MAXWELL



SURVEY
PROPERTY
OF
JAMES L. MAXWELL
COUNTY OF SPARTANBURG S.C.
SEP. 18, 1928
H. STRIBLING, C.E.
Scale 1 INCH = 200 FEET

Registered, Identified + Examined Oct. 9-1928 at 12:25 P.M.