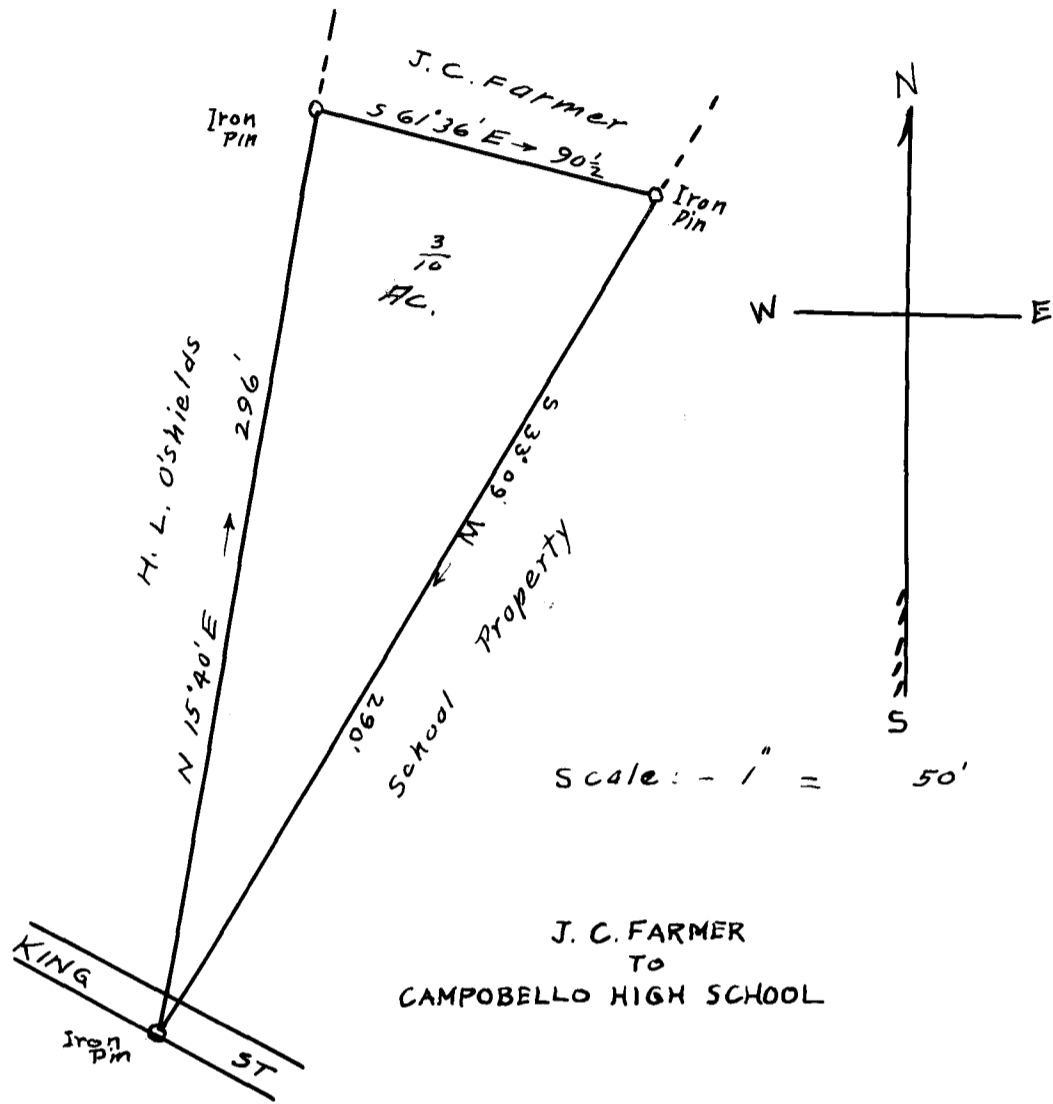


EX PARTE
CAMPOBELLO SCHOOL DISTRICT NO. 49



The above plat represents addition no. 2 school lands belonging to Campobello High School, and has such shape, size, marks, boundaries etc as shown in above plat.

Surveyed and platted this Oct 3-1928

J. H. Atkins
Surveyor.

Registered, Certified + Examined Oct. 23-1928 at 4:32 P.M