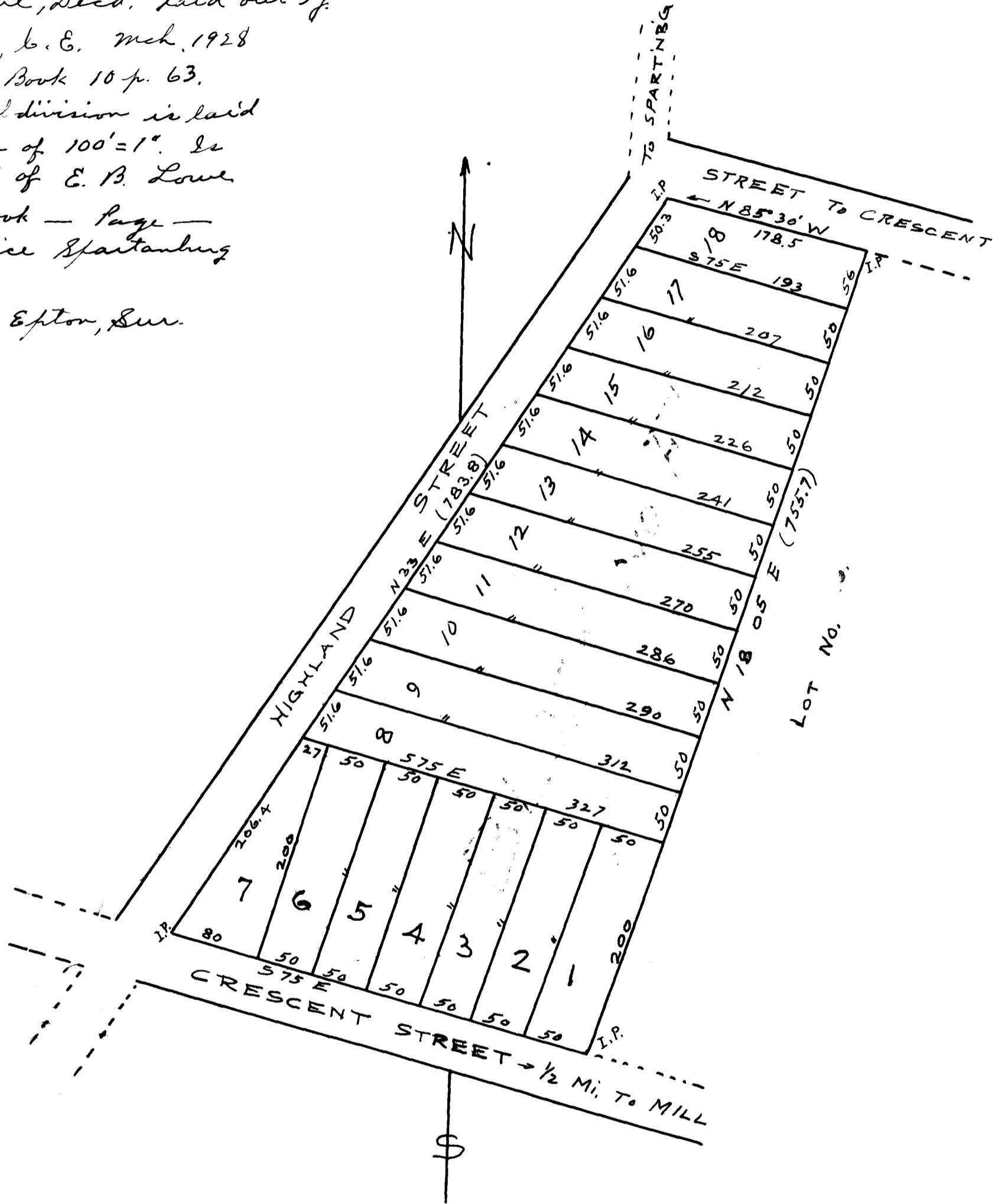


EX PARTE
E. B. LOWE

This plat shows subdivision
of Block "F" of the Estate of
E. J. W. Lowe, Decd. laid out by
H. Stirling, C.E. Mch. 1928
Recorded in Book 10 p. 63.

This subdivision is laid
out on scale of 100' = 1". Is
the property of E. B. Lowe.
See Deed Book - Page -
R.M. Co. Office Spartanburg
County, S.C.
L. P. Epton, Sur.



Date Oct. 30 - 1928
Scale 100' = 1"

N.B. Iron Pins + wooden stakes are put up at each corner. L. P. Epton
Sur.

Registered, Certified + Examined Nov. 28 - 1928 at 4:12 P.M.