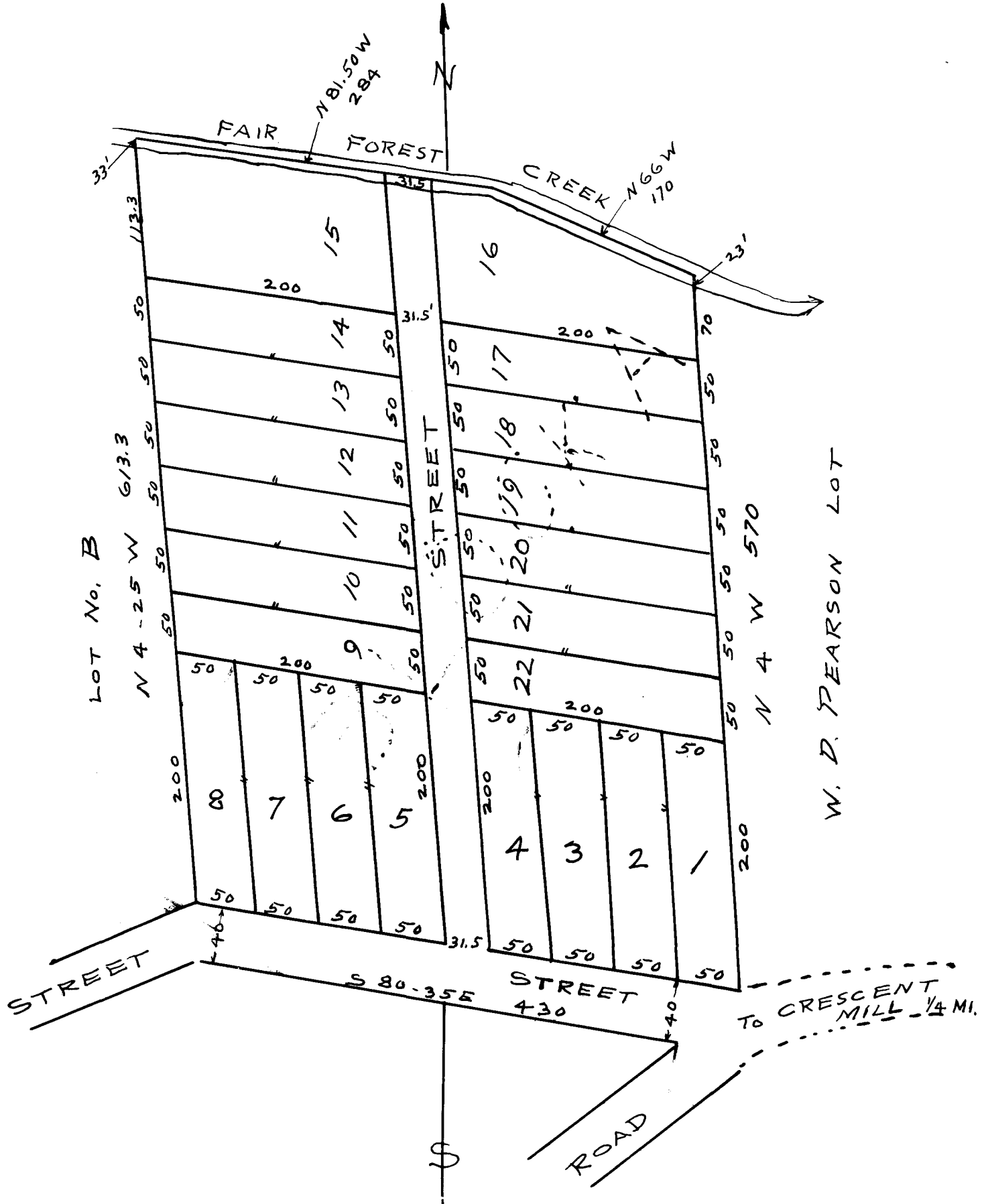


104

EX PARTE
E. B. LOWE



This plat shows subdivision of Block "A" of the E. B. Lowe Estate as laid out by H. Strubling, Mch. 1928 + recorded in Book 10 page 63. This subdivision is laid down on scale of 100' = 1" Dated Oct 30-1928. L.P. Epton, Sur.

Property of
E. B. Lowe - See Deed Book - Page - R.M.C. office Spartanburg County
N. B. Iron pins + stakes are put down at each corner.

Registered, certified + Examined Nov. 28-1928 at 4:11 P.M.