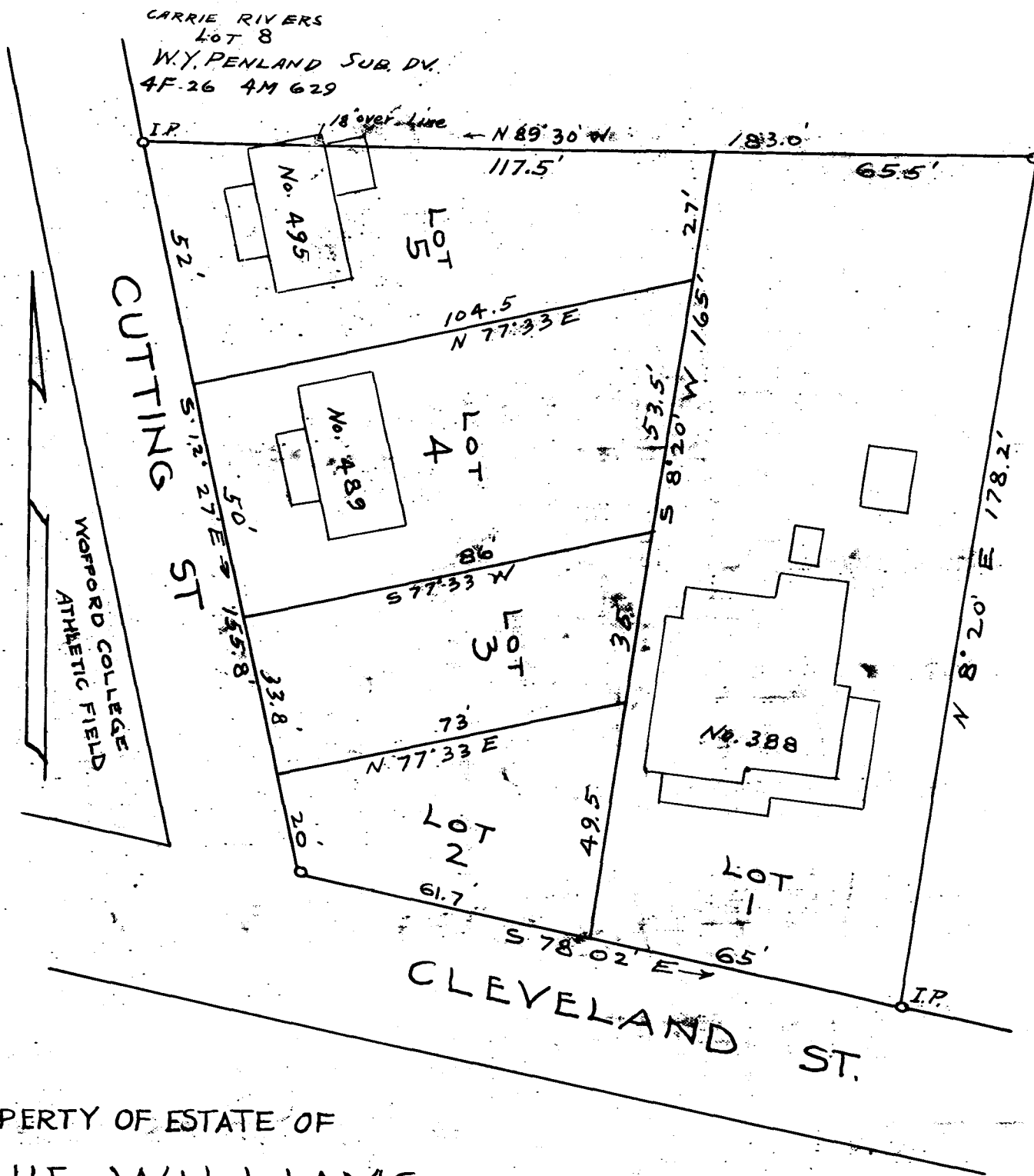


EX PARTE
WINNIE WILLIAMS



PROPERTY OF ESTATE OF
WINNIE WILLIAMS

IN THE CITY OF

SPARTANBURG S.C.

SCALE 1" = 30' SEPT. 14, 1928

F.C. WYSE, CIVIL ENGINEER
SPARTANBURG, S.C.

R.M.C. 3K 280

Registered, Certified & Examined April 1-1929 at 12:52 P.M.