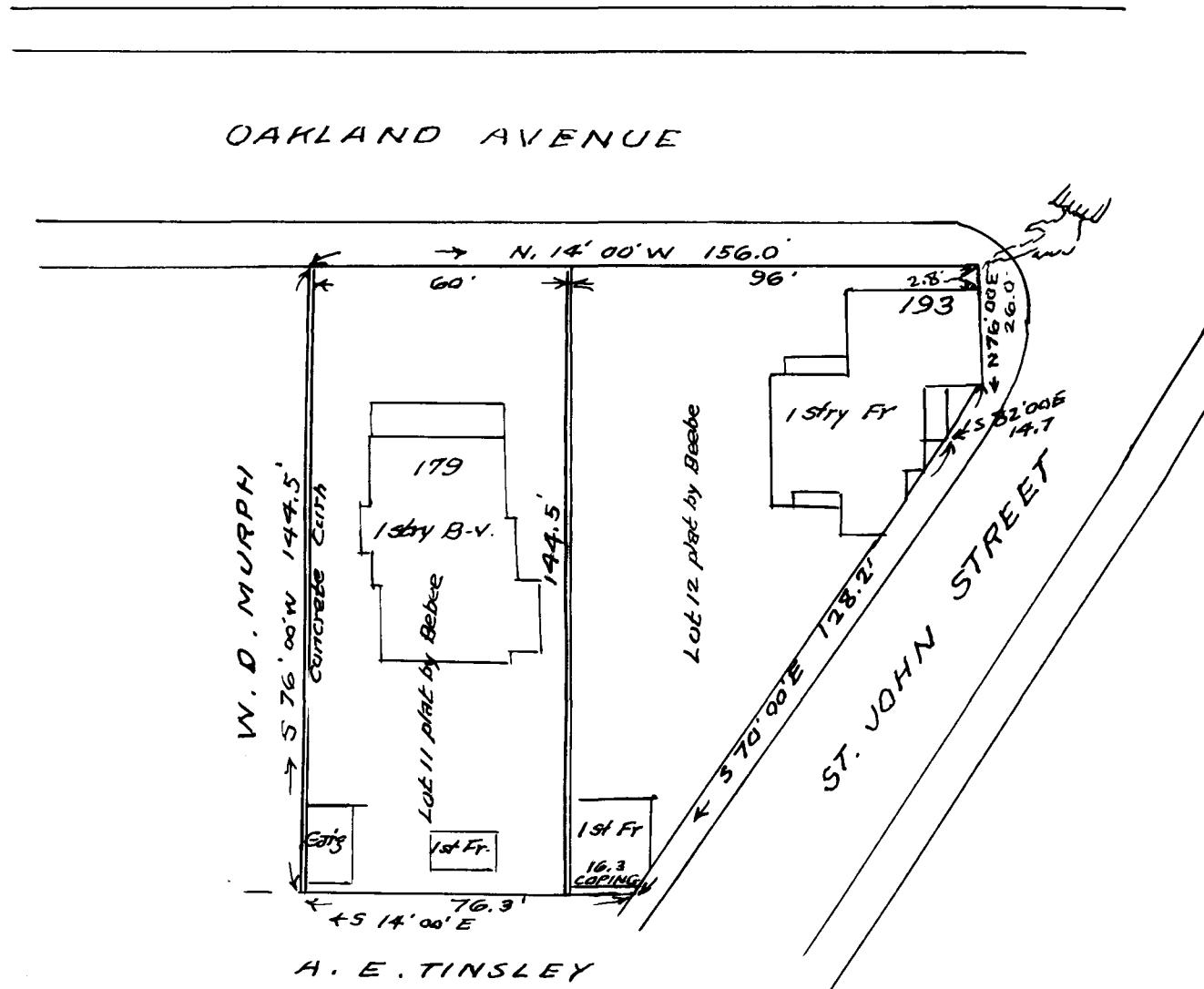


EX PARTE  
STANDARD OIL CO



PLAT 25  
 showing Service Station Site  
 Situate in the city of Spartanburg, So. Car.  
 Spartanburg County  
 To be conveyed to the  
 STANDARD OIL CO. OF N.J.  
 by A. E. Tinsley  
 Surveyed Aug 29<sup>th</sup> 1929, by Richard L. Rhett  
 Scale 1" = 40' Surveyor.

Note See also plats by H. Beebe, Engr. 12/21/1920  
 W.N. Willis Engr's 3/29/1924

Registered, Certified & Examined Oct 14, 1929 at 1:45 P.M.