

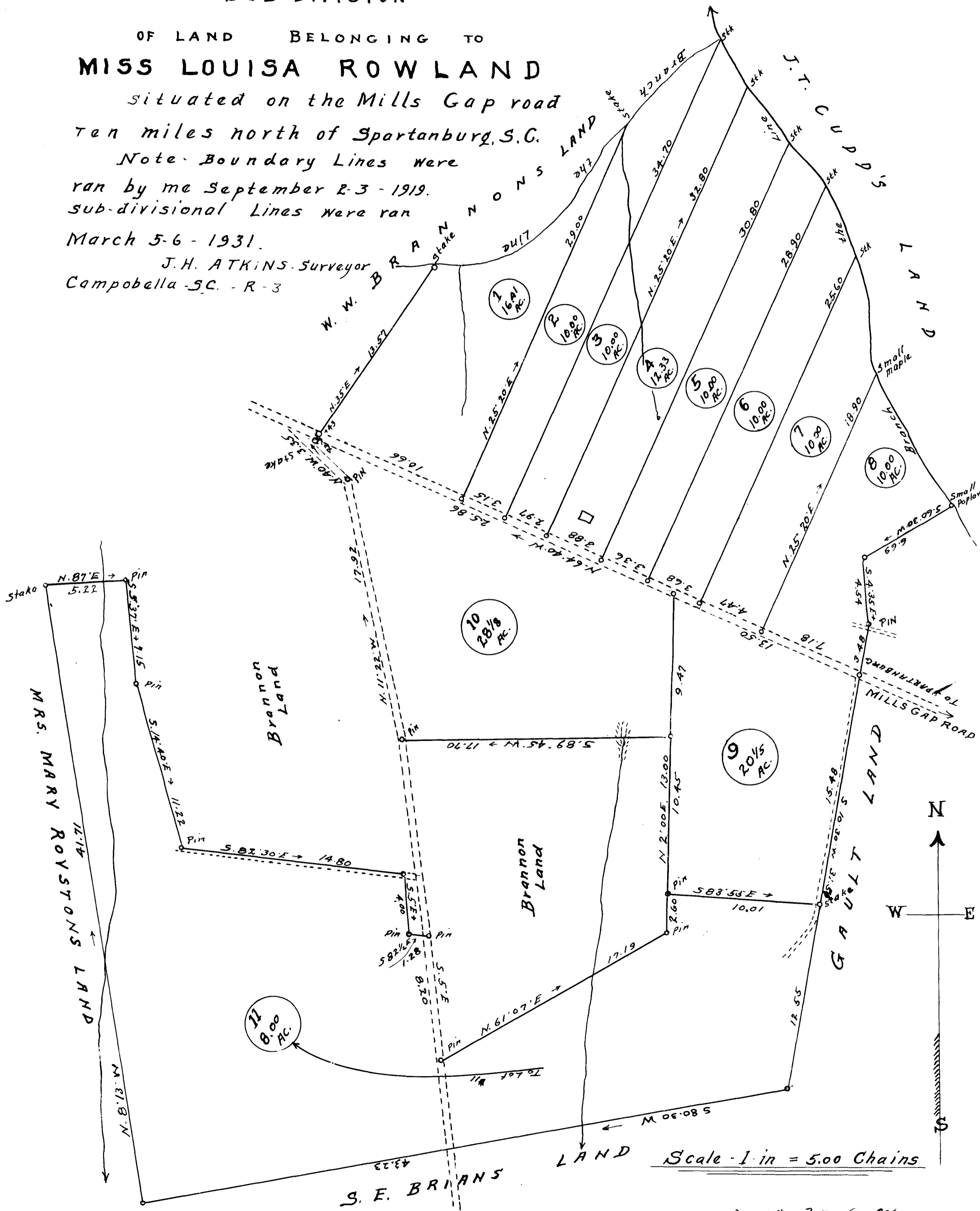
SUB-DIVISION

OF LAND BELONGING TO MISS LOUISA ROWLAND

situated on the Mills Gap road ten miles north of Spartanburg, S.C.

Note: Boundary Lines were ran by me September 2-3 - 1919. sub-divisional Lines were ran March 5-6 - 1931.

J. H. ATKINS, Surveyor
Campobella - S.C. - R-3



Scale - 1 in = 5.00 Chains

Registered, Certified & Examined April 17-1931 at 10:35 a.m