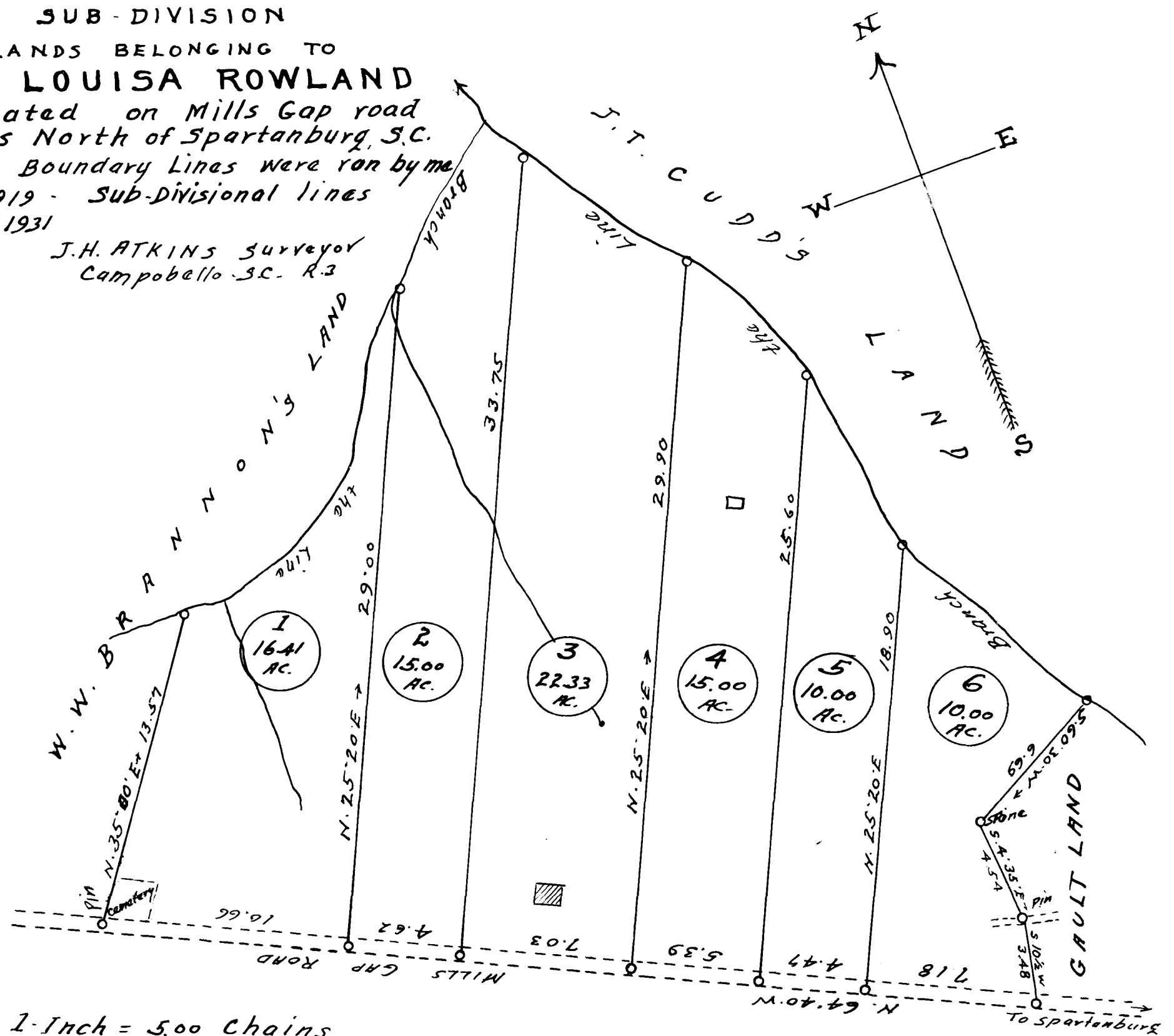


EX PARTE  
LOUISE ROWLAND

SUB-DIVISION  
OF LANDS BELONGING TO  
MISS LOUISA ROWLAND

Situated on Mills Gap road  
ten miles North of Spartanburg, S.C.  
Note - Boundary Lines were run by me  
Sept 2-3-1919 - Sub-Divisional lines  
March 5-6-1931

J.H. ATKINS Surveyor  
Campobello, S.C. R.3



Scale 1-Inch = 5.00 Chains

Registered, Certified & Examined April 17-1931 at 10:35 A.M.