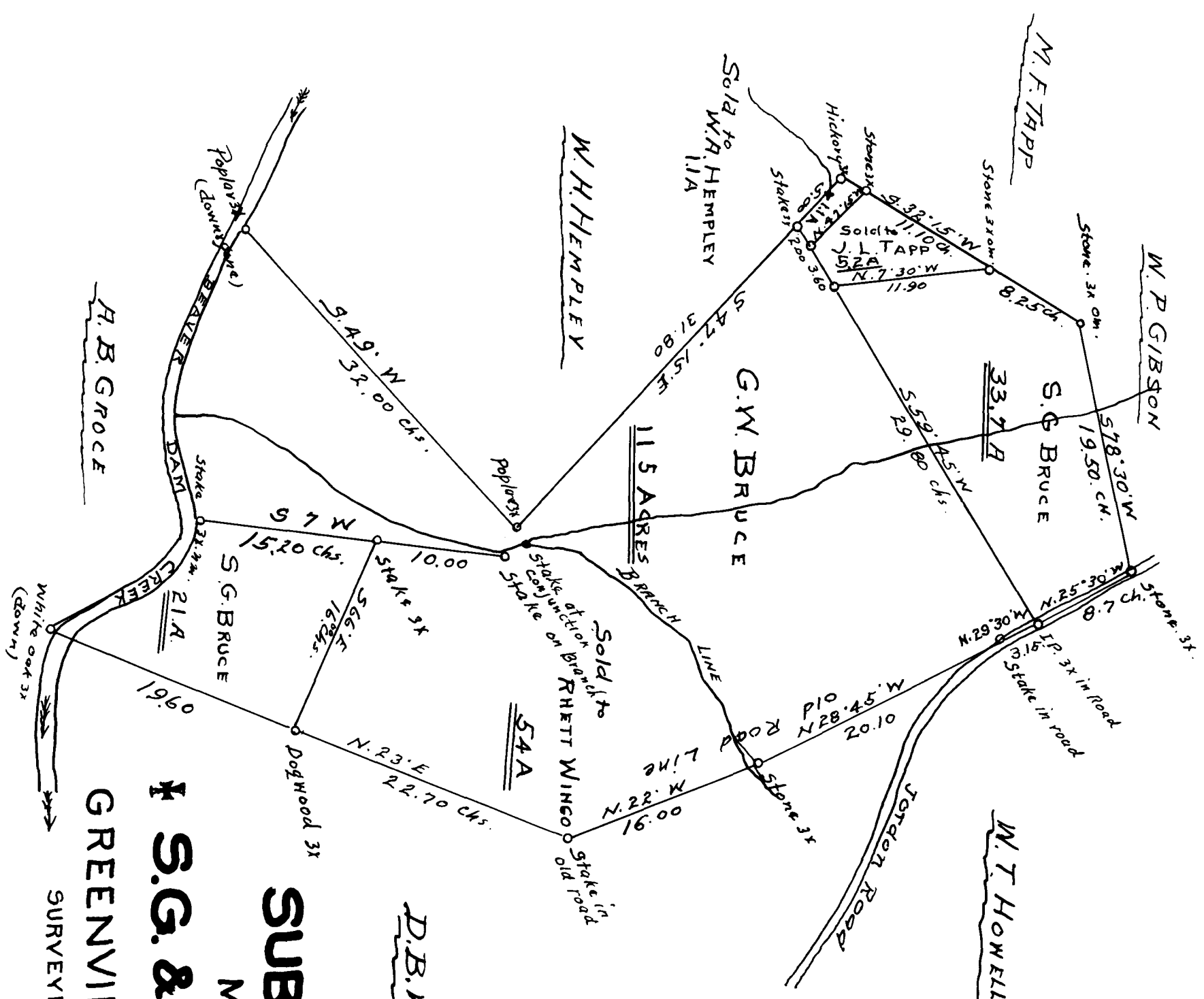


EX PARTE
S.G. & G.W. BRUCE



SUB - DIVISION
MADE FOR
*** S.G. & G.W. BRUCE ***
GREENVILLE COUNTY, S. C.
 SURVEYED this 1st Day of Dec. 1911

Will Braced / C. E. Summerson
 Greenville, S.C.

Registered, Certified + Examined April 13 - 1932 at 4:14 P.M.