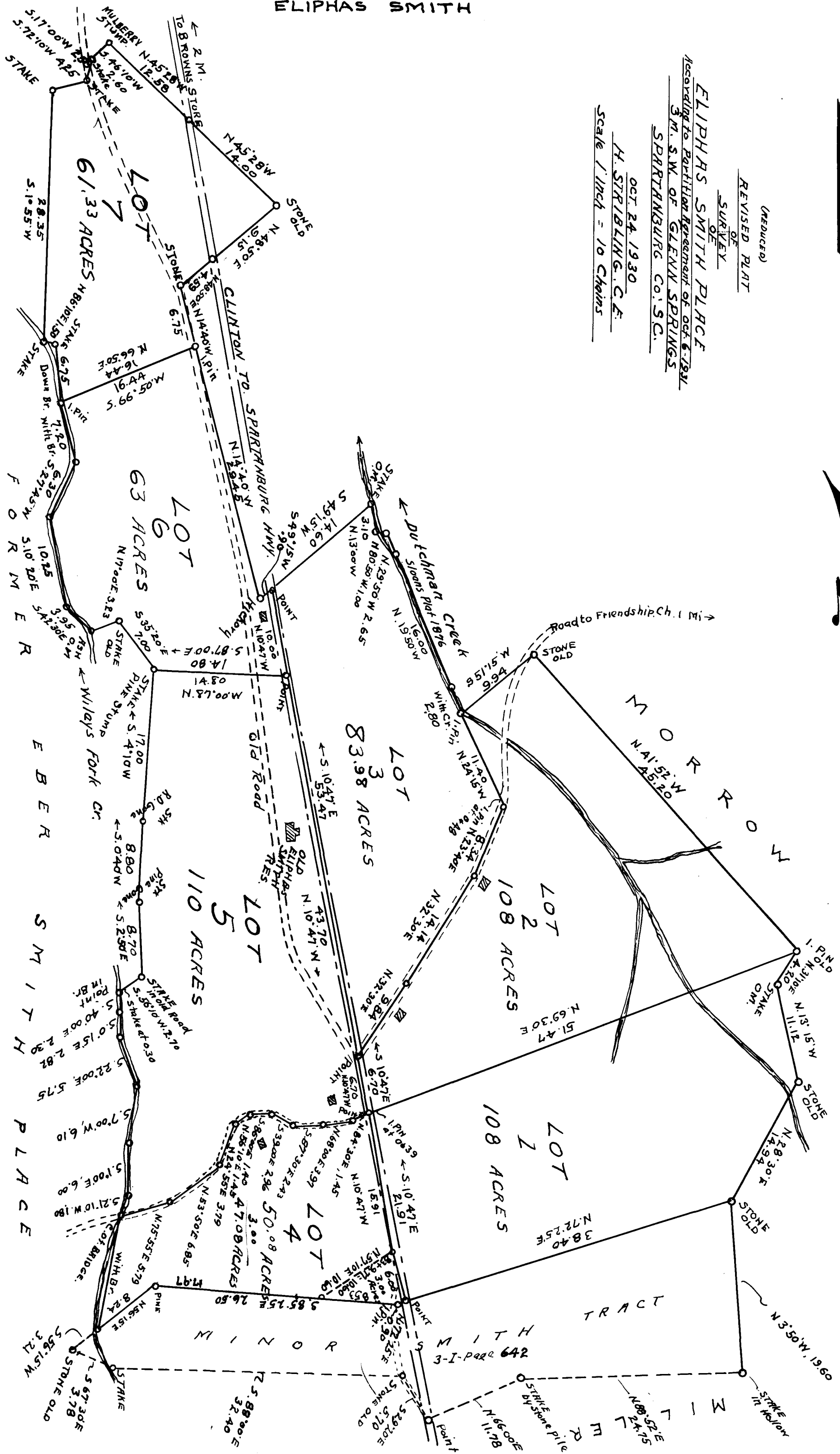


147

EX PARTE  
ELIPHAS SMITH

(REDUCED)  
REVISED PLAT  
OF  
SURVEY  
OF  
ELIPHAS SMITH PLACE  
According to Partial Re-arrangement of Oct. 6-1891  
3 M. S.W. OF GLENN SPRINGS  
SPRINGFIELD CO. S.C.  
OCT. 24, 1930  
H. STRIBLING, C.E.  
SCALE 1 inch = 10 Chains

Magnetic Meridian of Oct. 1930 Used



Registered, Certified + Examined March 27-1932 at 10:42 a.m.