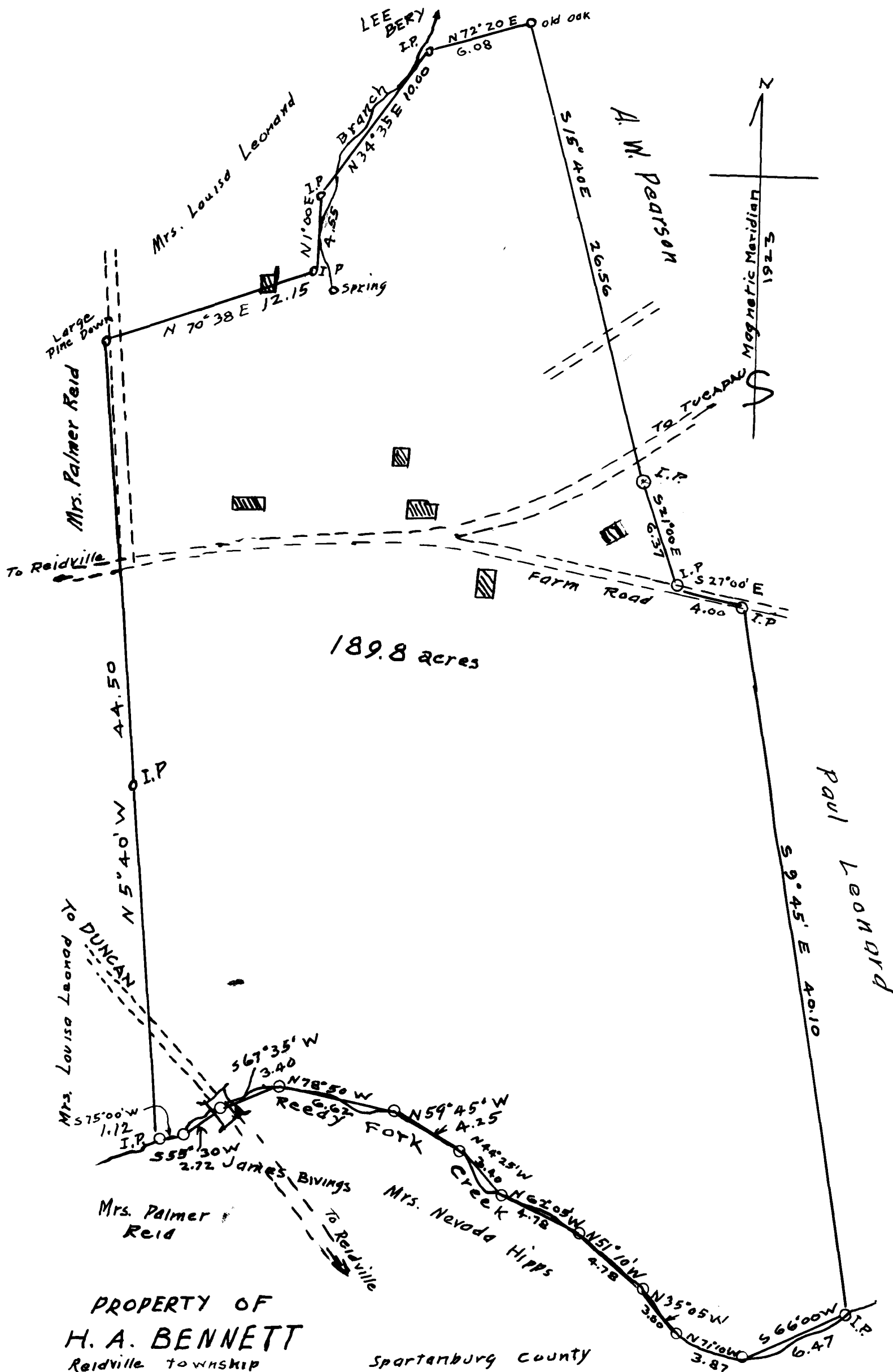


159

EX PARTE
N. A. BENNETT



PROPERTY OF
H. A. BENNETT

Reidville township Spartanburg County
South Carolina

Scale 1" = 6 chains August 26, 1933
Note: Copied from plat made by H. Stribling, C.E. Jan. 15 1923 & from
partial survey by the Sa. Brockman Aug. 1933 H. S. BROCKMAN, SURVEYOR

Registered, Certified & Examined Sept. 28, 1933 at 11:40 a.m