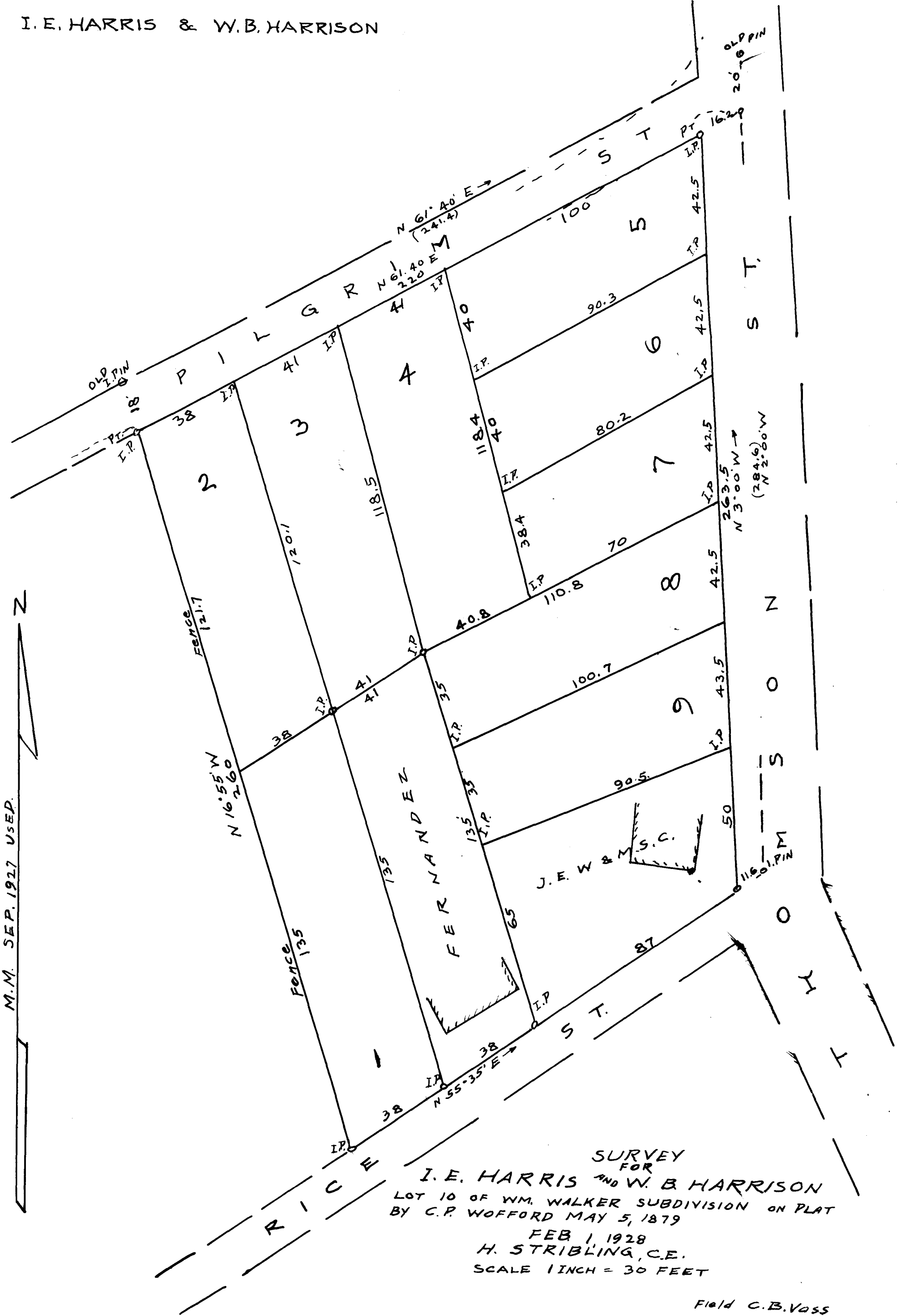


EX PARTE
I. E. HARRIS & W. B. HARRISON



SURVEY
 FOR
 I. E. HARRIS AND W. B. HARRISON
 LOT 10 OF WM. WALKER SUBDIVISION ON PLAT
 BY C. P. WOFFORD MAY 5, 1879
 FEB 1, 1928
 H. STRIBLING, C.E.
 SCALE 1 INCH = 30 FEET

Field C.B. Voss

Registered, Certified + Examined June 7-1929 at 3:26 P.M.