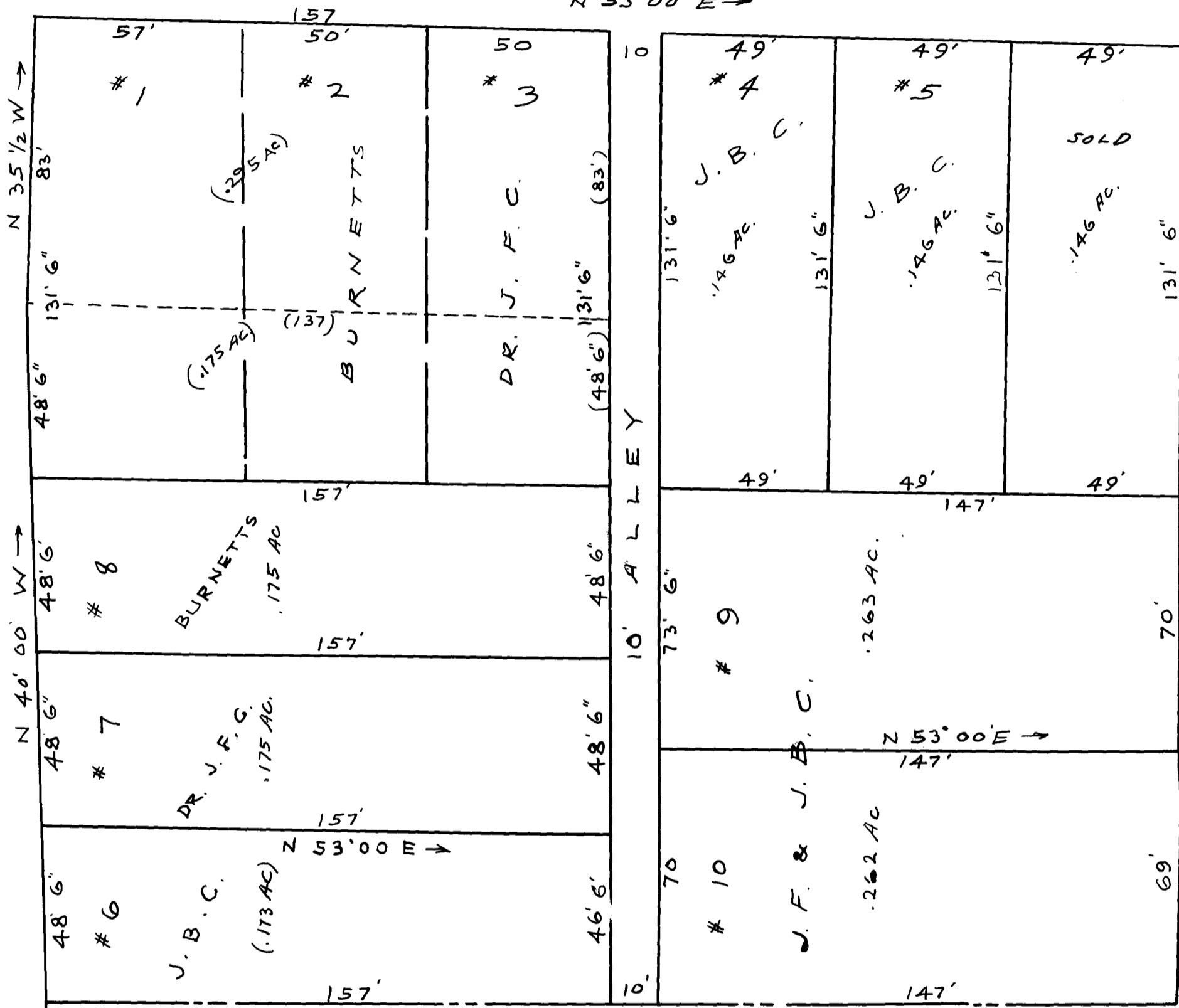


88

M A G N O L I A S T.

C O L L E G E S T.



ORIGINAL IN POSSESSION  
OF JESSE CLEVELAND  
COPY  
Note NO SURVEY  
changes, etc. as dotted  
are by individual since  
Archer Plat

GREENLEAF  
LOT

H. STRIBLING, C. E., JULY 17, 1929

This Plat represents the division  
of the Britton Lots  
Surveyed Jan 1891  
by E. L. Archer

Registered, Certified + Examined July 18, 1929 at 12:31 P.M.