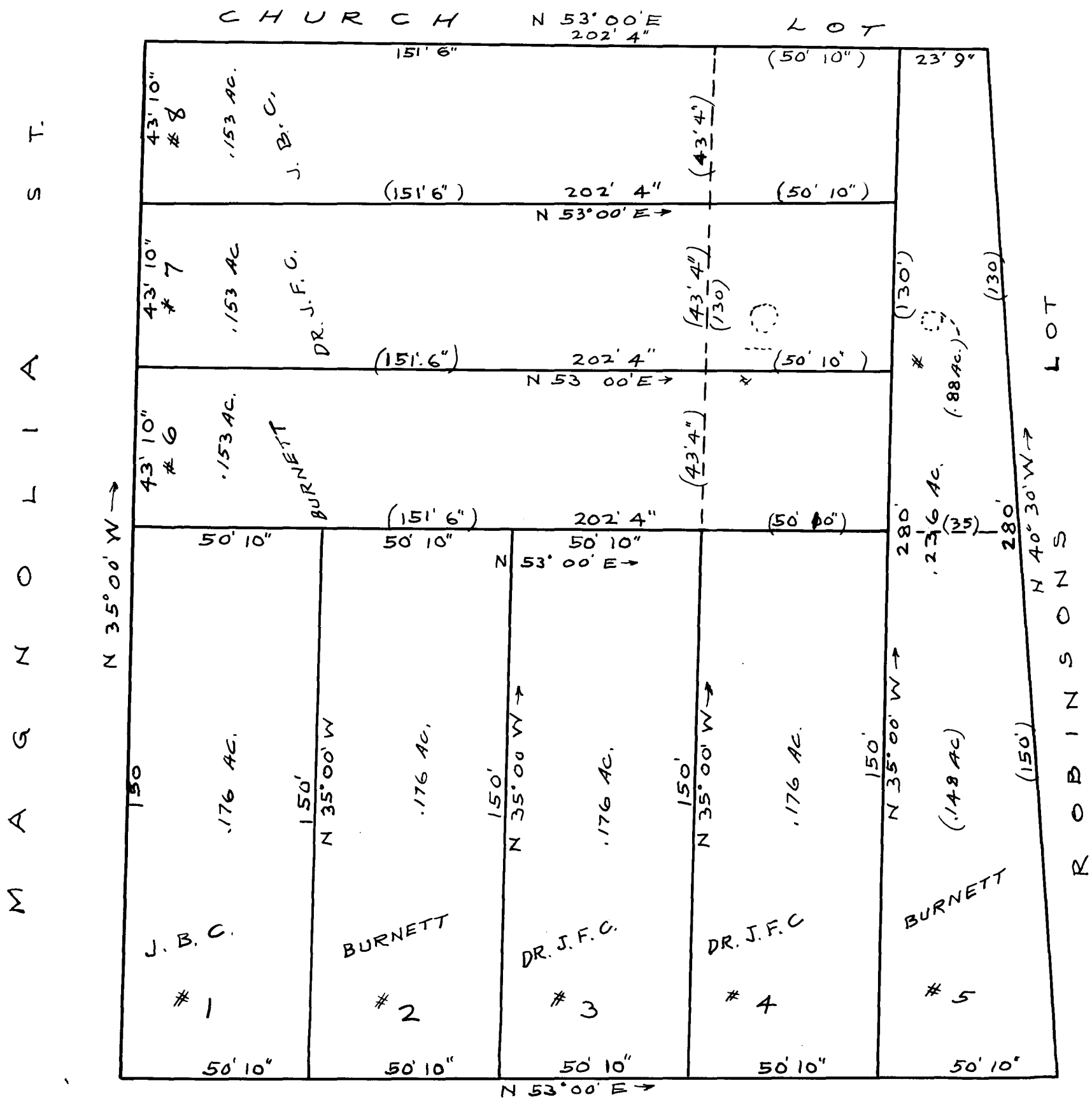
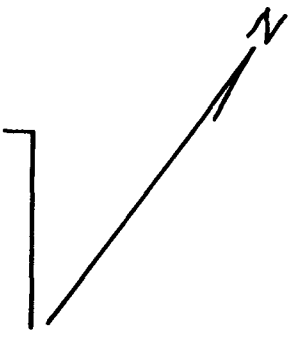


9



C O L L E G E S T.



ORIGINAL IN POSSESSION OF JESSE CLEVELAND
 COPY
 (NO SURVEY)
 Note: Changes etc as dotted are by individual since Archer Plat. H. STRIBLING, C.E. JULY 17, 1929

This Plat represents the division of the Kirkland lots. Surveyed Jan. 1891 by E. L. Archer

Registered, Certified & Examined July 18, 1929 at 12:31 P.M.