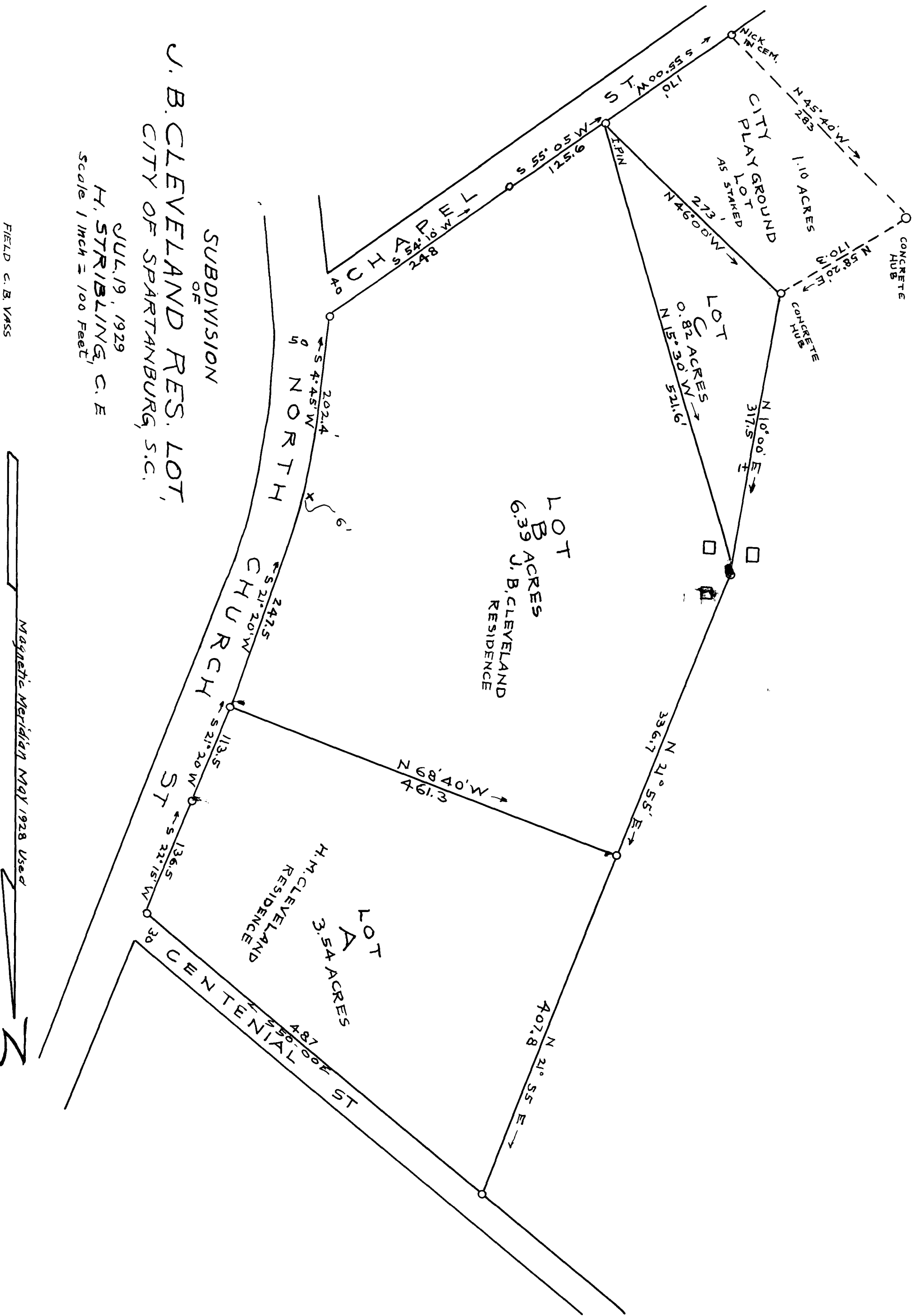


EX PARTE
J. B. CLEVELAND



J. B. CLEVELAND RES. LOT,
CITY OF SPARTANBURG, S.C.

JUL. 19, 1929
H. STRIBLING, C. E.
Scale 1 inch = 100 Feet

FIELD C. B. VASS

Magnetic Meridian May 1928 Used

Registered, Certified & Examined August 14th 1929 at 1:01 P.M.