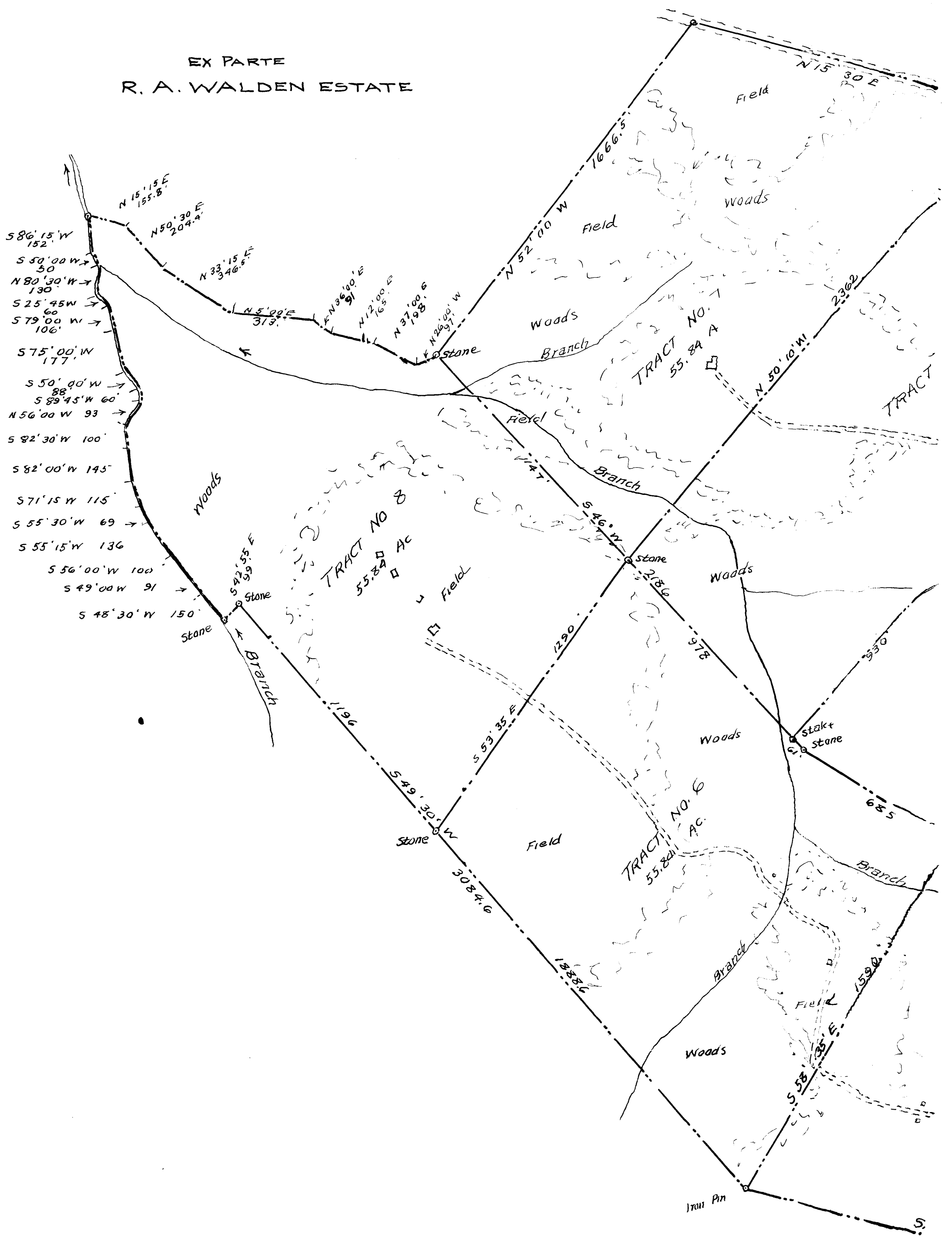
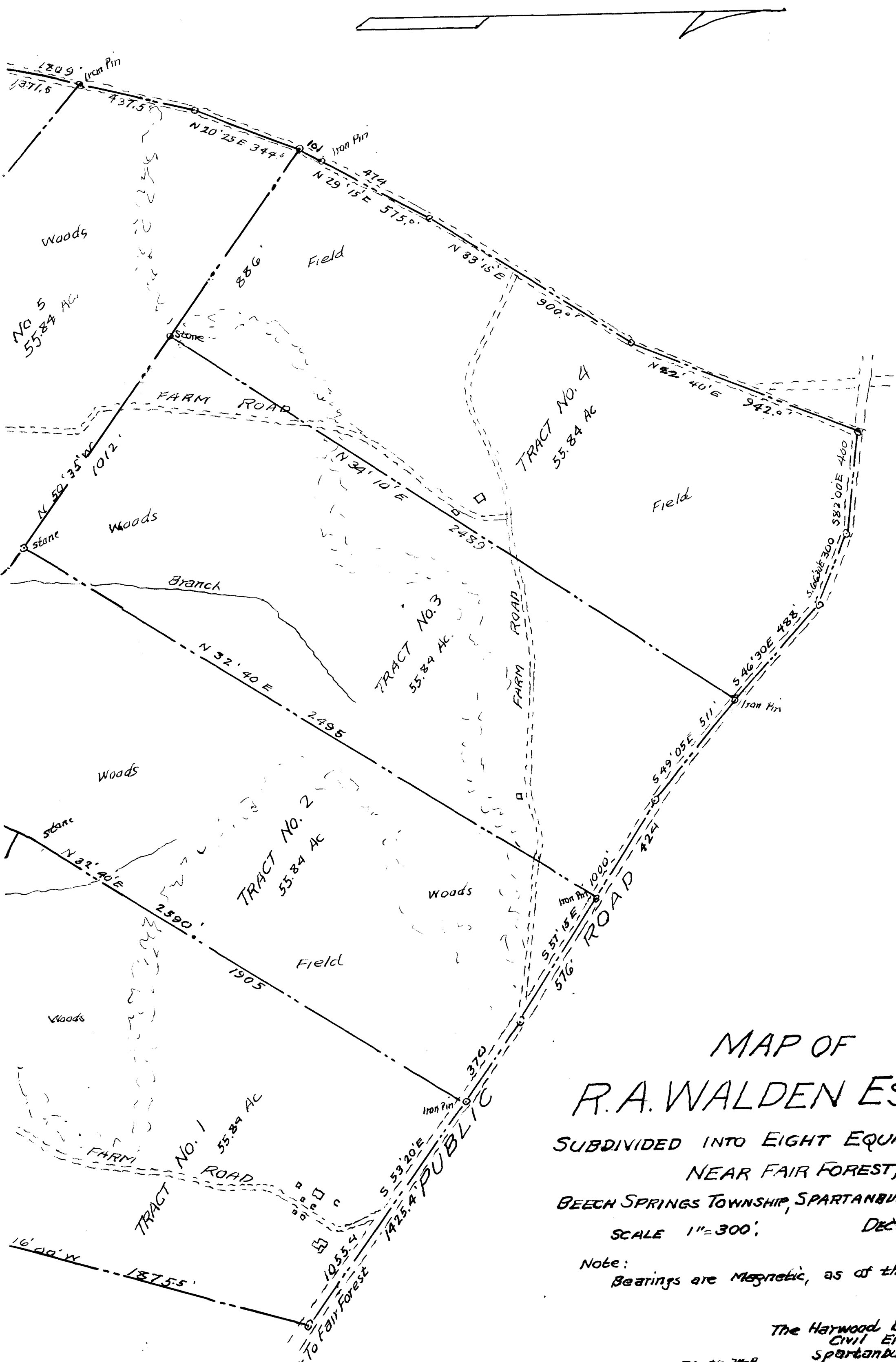


31

EX PARTE  
R. A. WALDEN ESTATE



Registered, Certified & Examined Jan'y. 7-1930 at 4:34 P.M.



MAP OF  
 R.A. WALDEN ESTATE,  
 SUBDIVIDED INTO EIGHT EQUAL TRACTS.  
 NEAR FAIR FOREST,  
 BEECH SPRINGS TOWNSHIP, SPARTANBURG COUNTY, S.C.  
 SCALE 1"=300'      DEC 8, 1928.

Note:  
 Bearings are Magnetic, as of this date.

The Harwood Beebe Co.  
 Civil Engineers,  
 Spartanburg, S. C.