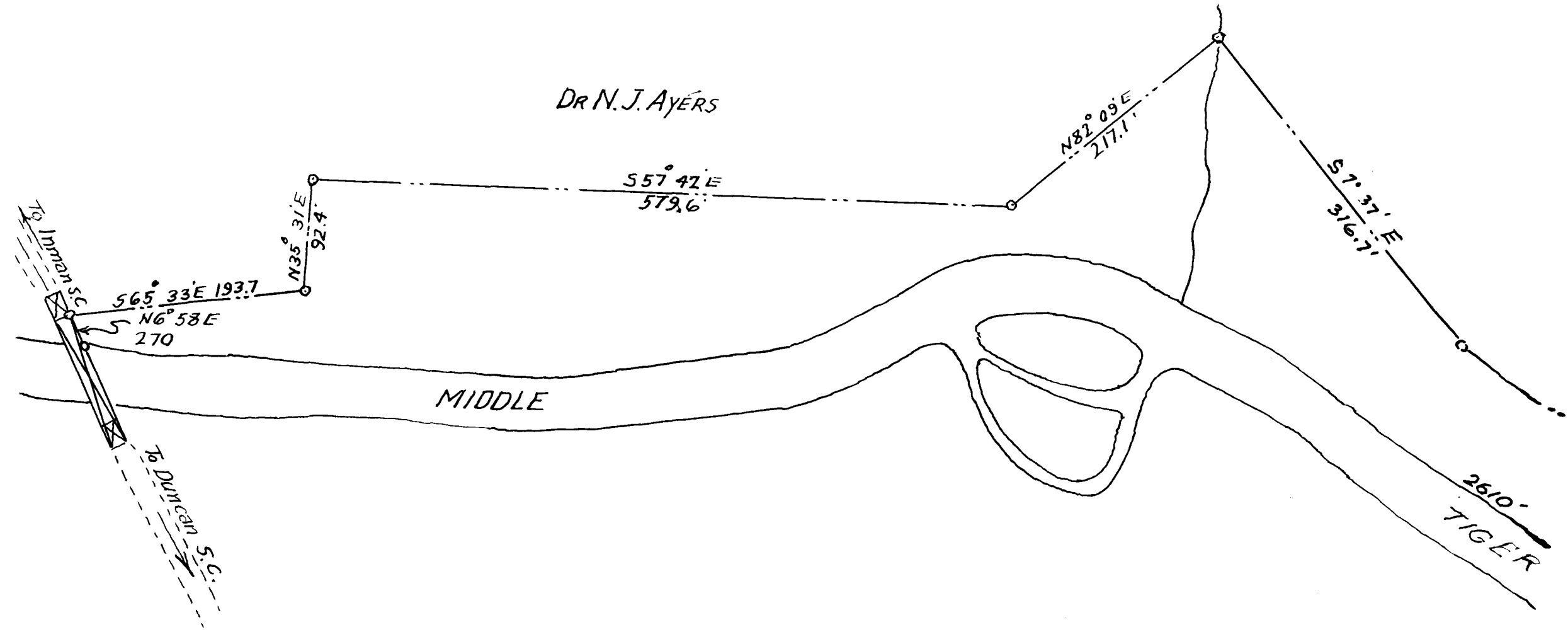


50

EX PARTE
DUKE POWER CO.



DUKE POWER COMPANY
 TIGER STEAM STATION
 PLAT OF THAT PORTION
 OF PROPERTY OF
 DR N. J. AYERS
 BELOW ELEV. 3250
 SCALE 1"=100' MARCH 1930.
 SURVEYED BY J. N. Stribling Engr.