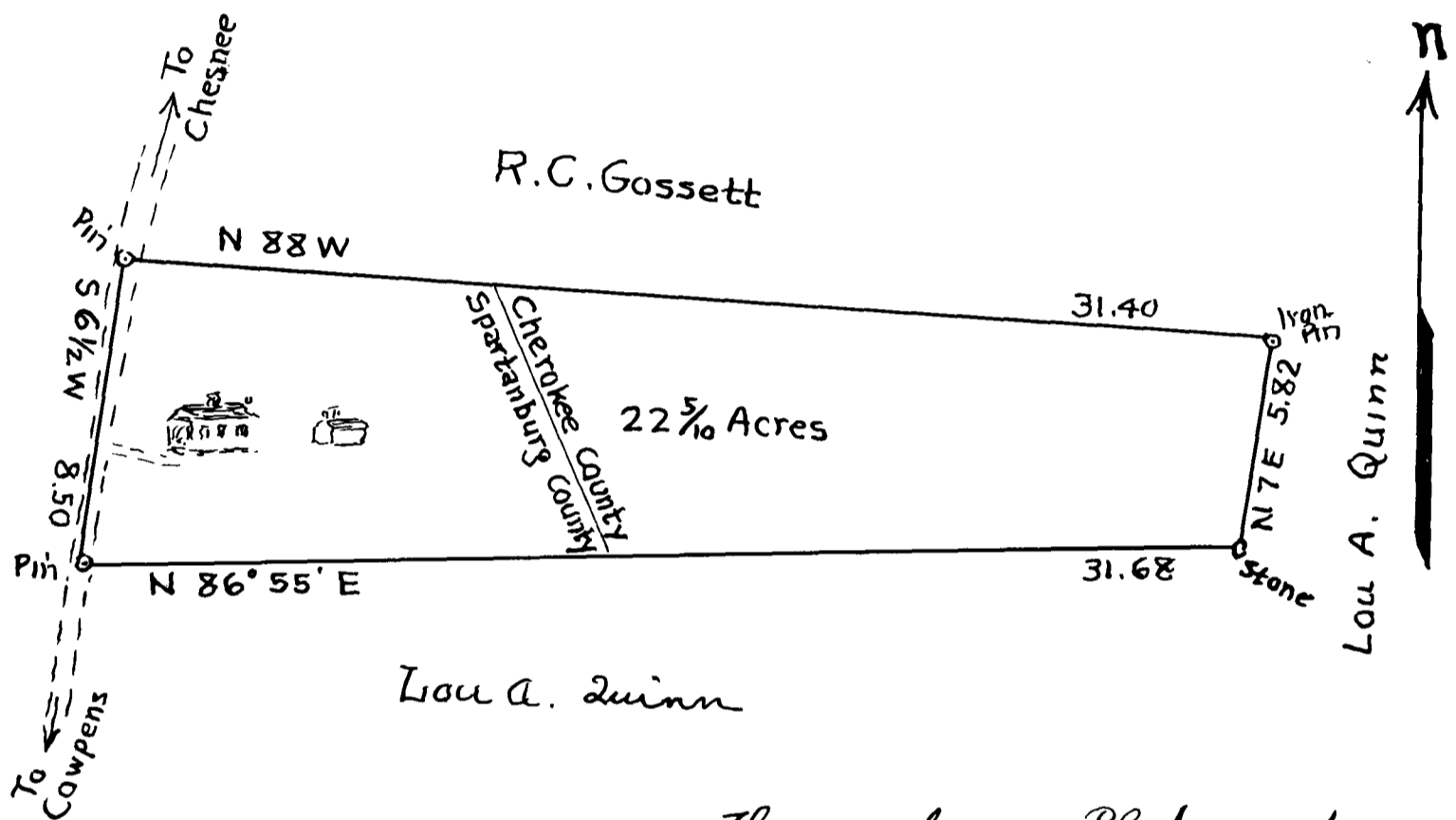


EX PARTE
FOSTER O. GOSSETT

Scale 5 Chains = 1 inch



The above Plat represents
 Foster O. Gossett tract of land on the East side
 of the Cowpens road, containing 22 ⁵/₁₀ acres,
 This being his entire interest in his Mother's,
 M.E. Gossett, estate, ^{And 14 1/2 acres, purchased from R.C. Gossett} Surveyed by me December 7th, 1925.
 Plat drawn April 25, 1930. John B. Cash, Surveyor.

Registered, Certified & Examined April 28-1930 at 11:52 A.M.