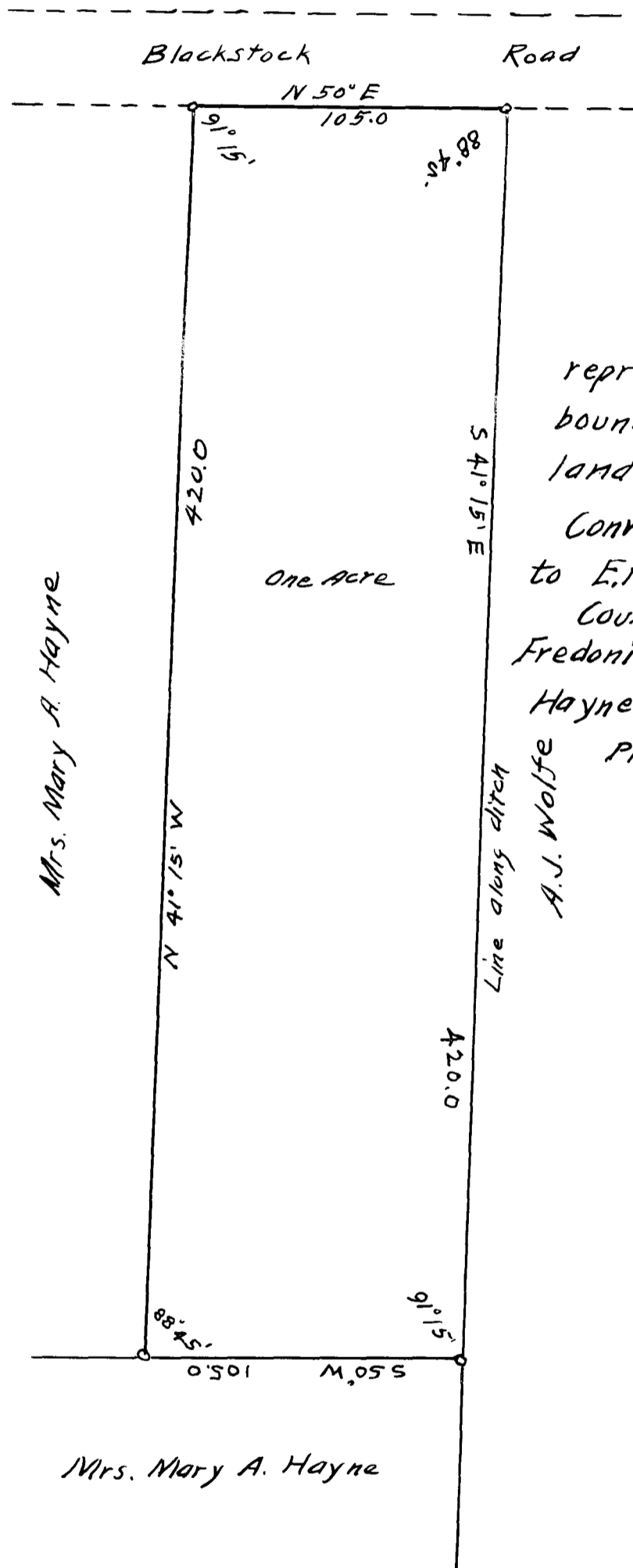


EX PARTE
E. H. HAYNES



A Platt
 representing location and
 boundary of one acre of
 land near Roebuck, S.C.
 Conveyed by Mrs. M.A. Haynes
 to E.H. Haynes Oct. 10, 1910
 Courses taken from title of
 Fredonia H. Griffin to Mary A.
 Haynes, dated Jan. 1897
 Platted Oct. 10, 1910
 Paul H. Mash
 CIV. ENG.
 scale 1" = 100'

Registered, Certified + Examined May 14-1930 at 9:40 A.M.