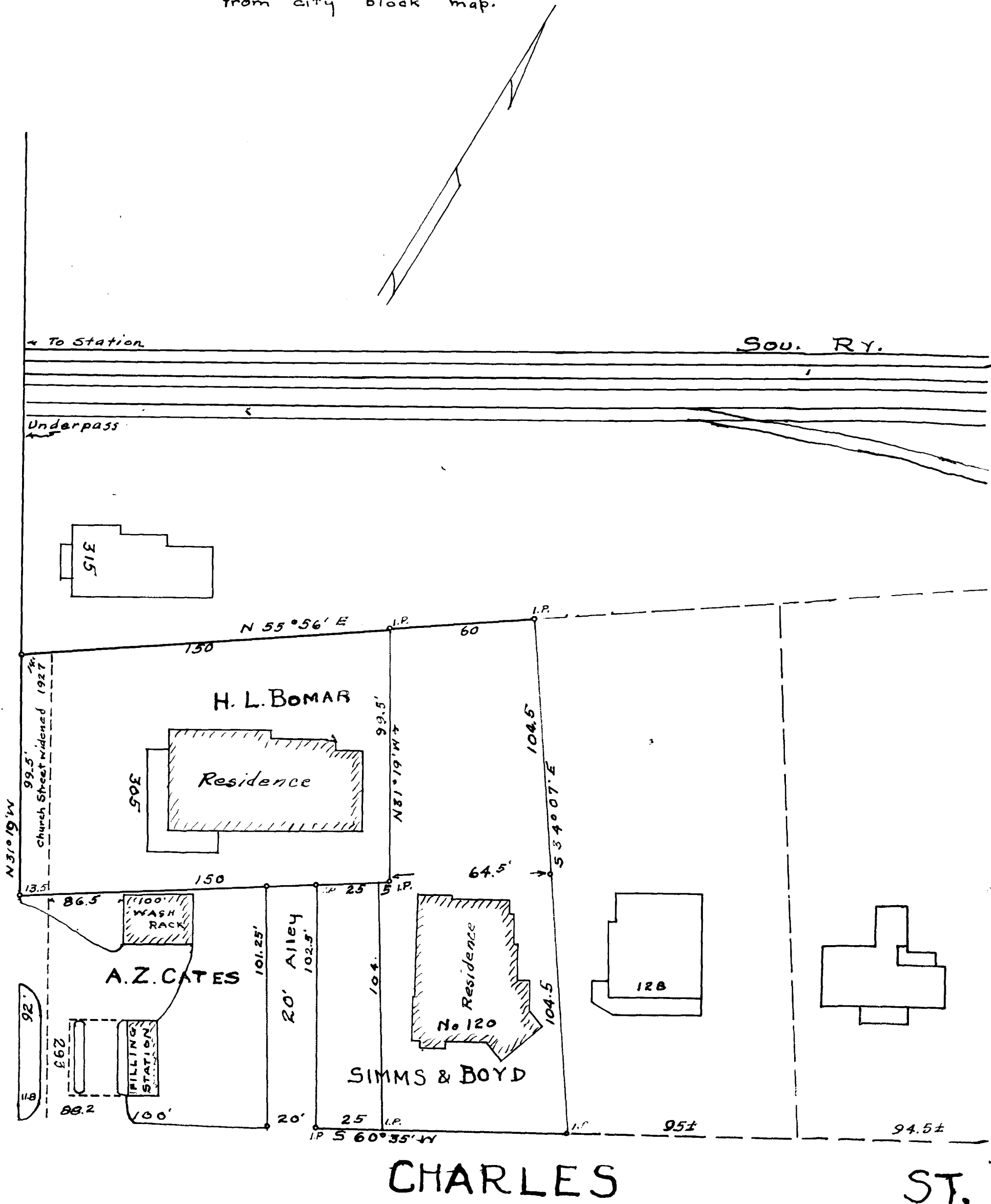


Note:-

Survey made on lines shown solid
Dotted lines and R.R. lines reproduced
from city block map.

N. CHURCH ST.



EX PARTE

PROPERTY OF

R.B. SIMS, C.W. BOYD & W.L. McMILLAN

R. B. SIMMS, C. W. BOYD & W. L. McMILLAN

IN THE CITY OF

SPARTANBURG

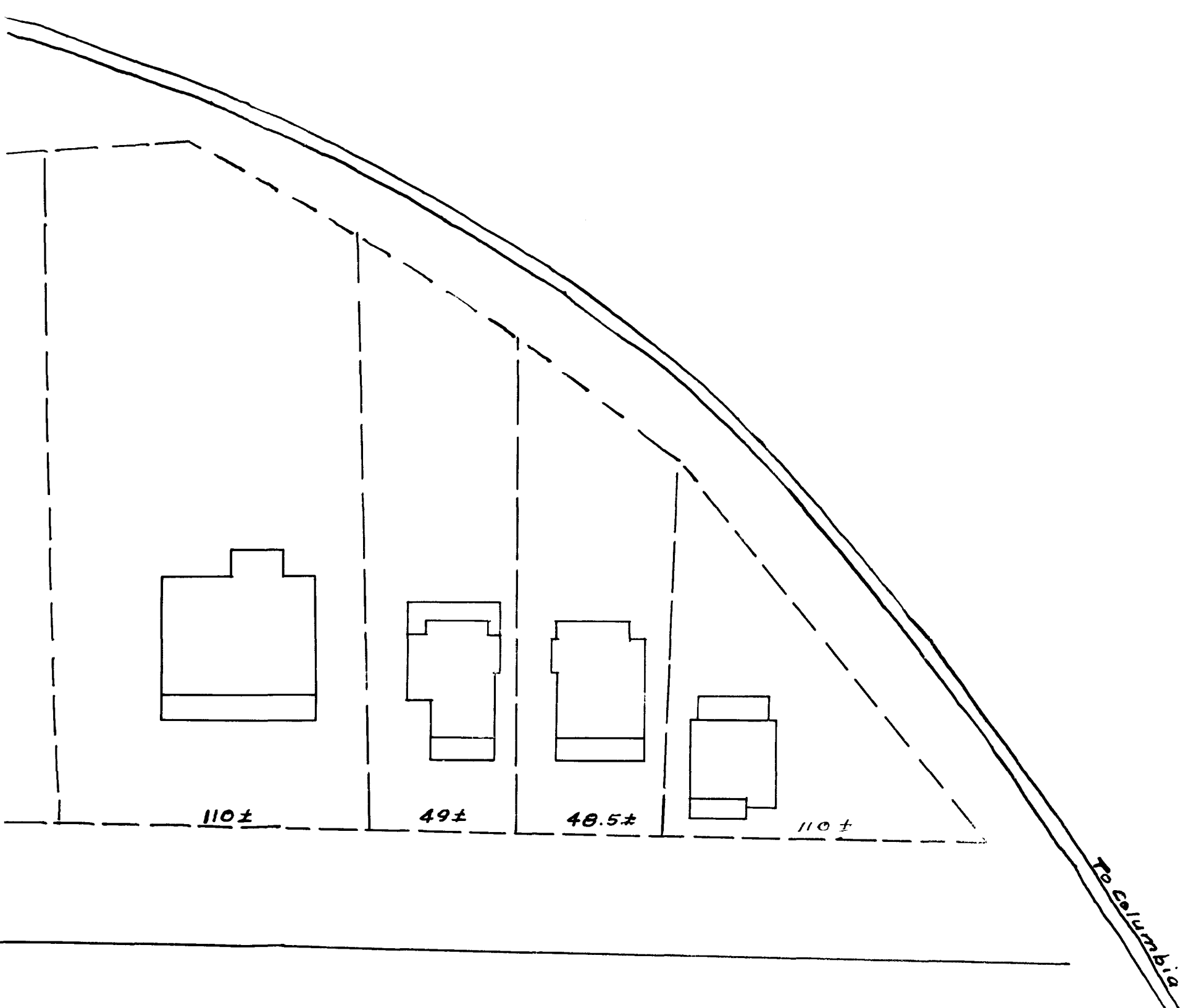
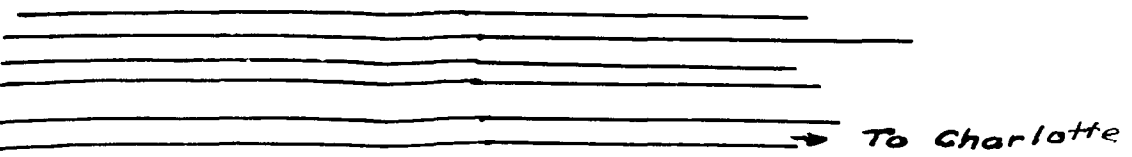
SPARTANBURG Co. S.C.

Scale 1" = 40'

8-12-24.

Rev. 11-10-30 -

W. N. WILLIS - ENGR.
SPARTANBURG S.C.



Registered, certified and examined November 26th 1930 at 2:45 P.M