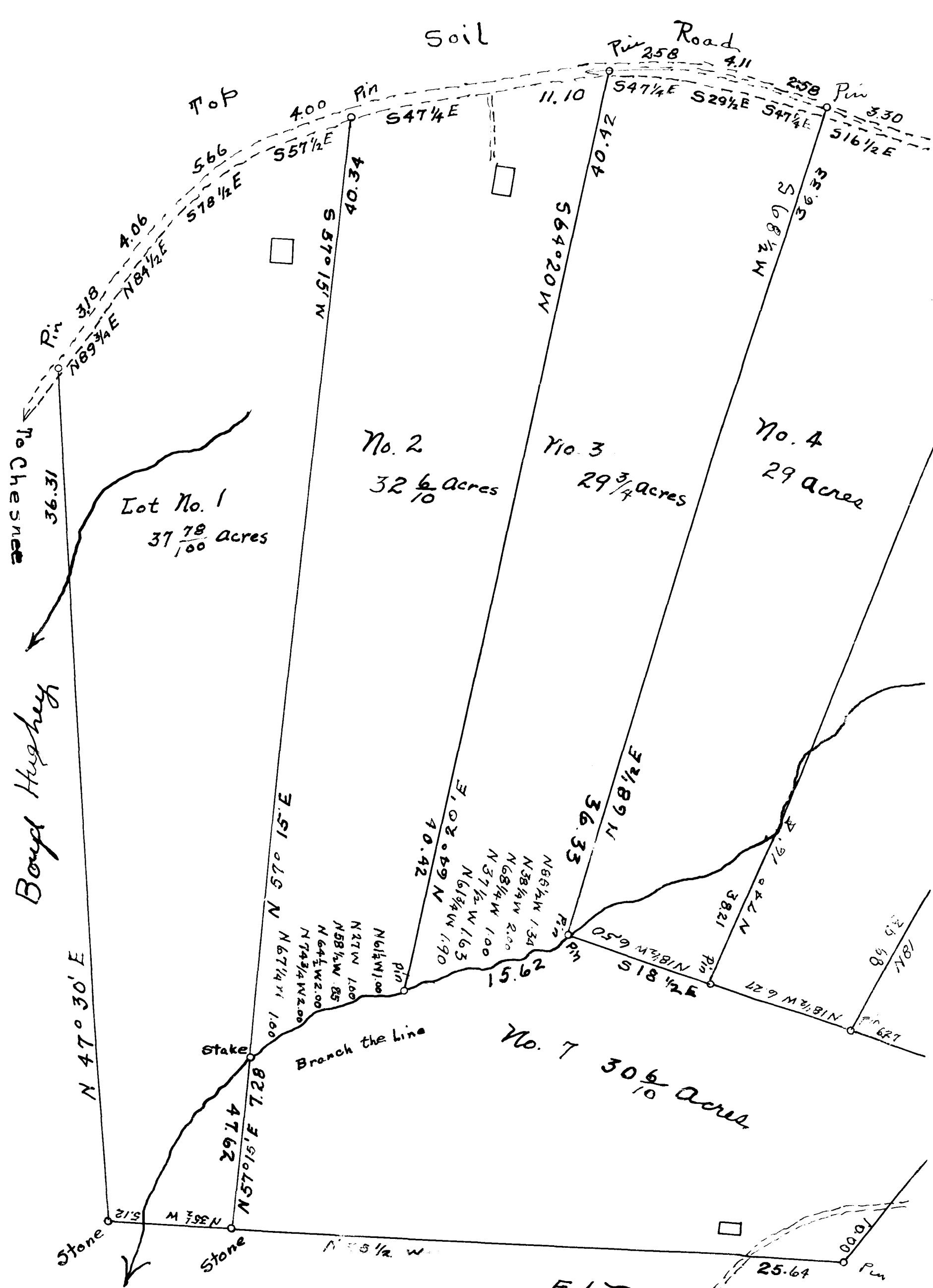


74

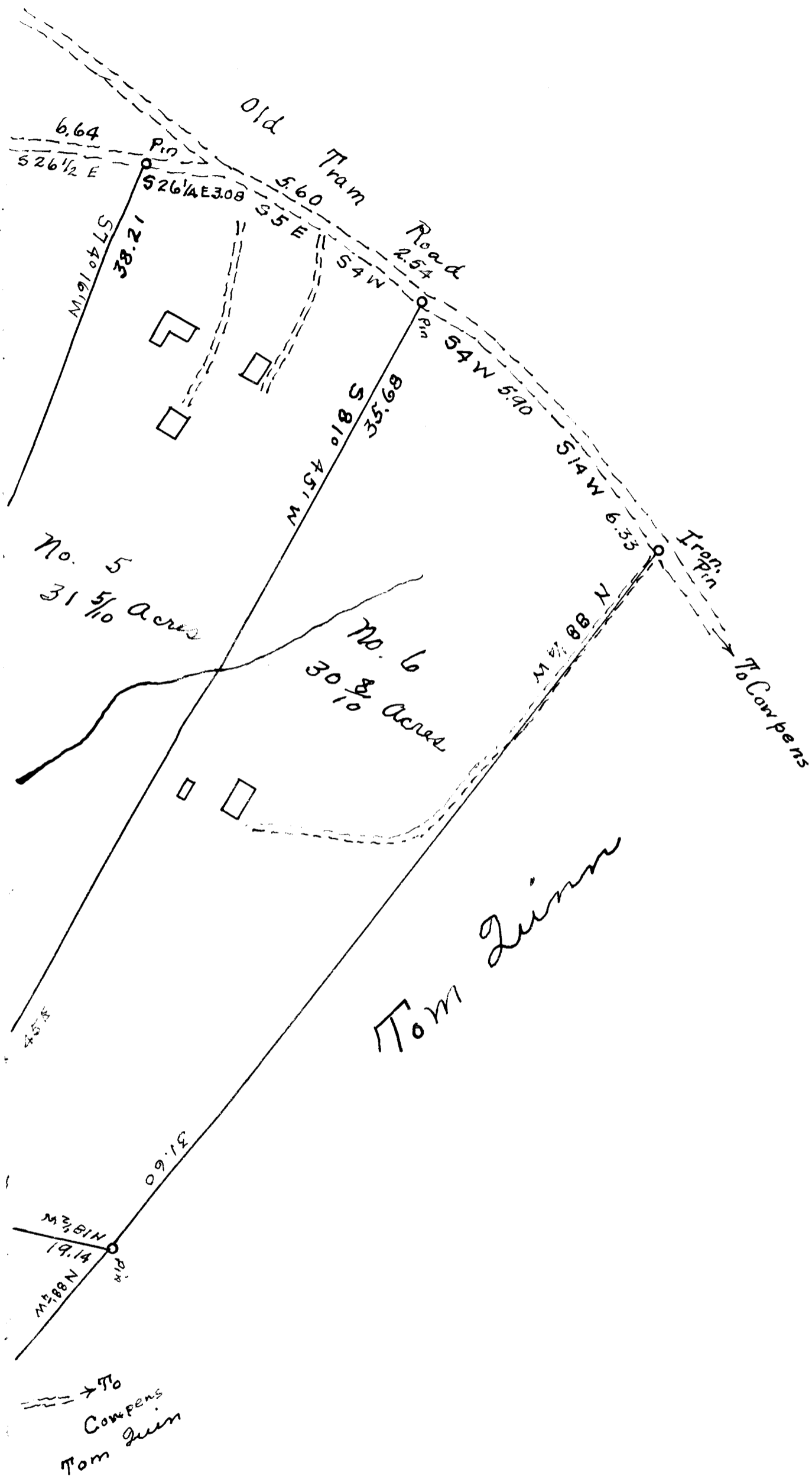
EX PARTE
R.C. GOSSETT



R.P. Gardner
 Ed Robbins
 Plat of R.C. Gossett Estate Resurveyed
 by me August 13-15 1930 at request of
 the Administrators Plat made by me.
 August 16, 1930.

John B. Cash
 Surveyor.

Scale 4 Chains = 1 inch



Registered certified and examined December 8th 1930 at 2:35 PM