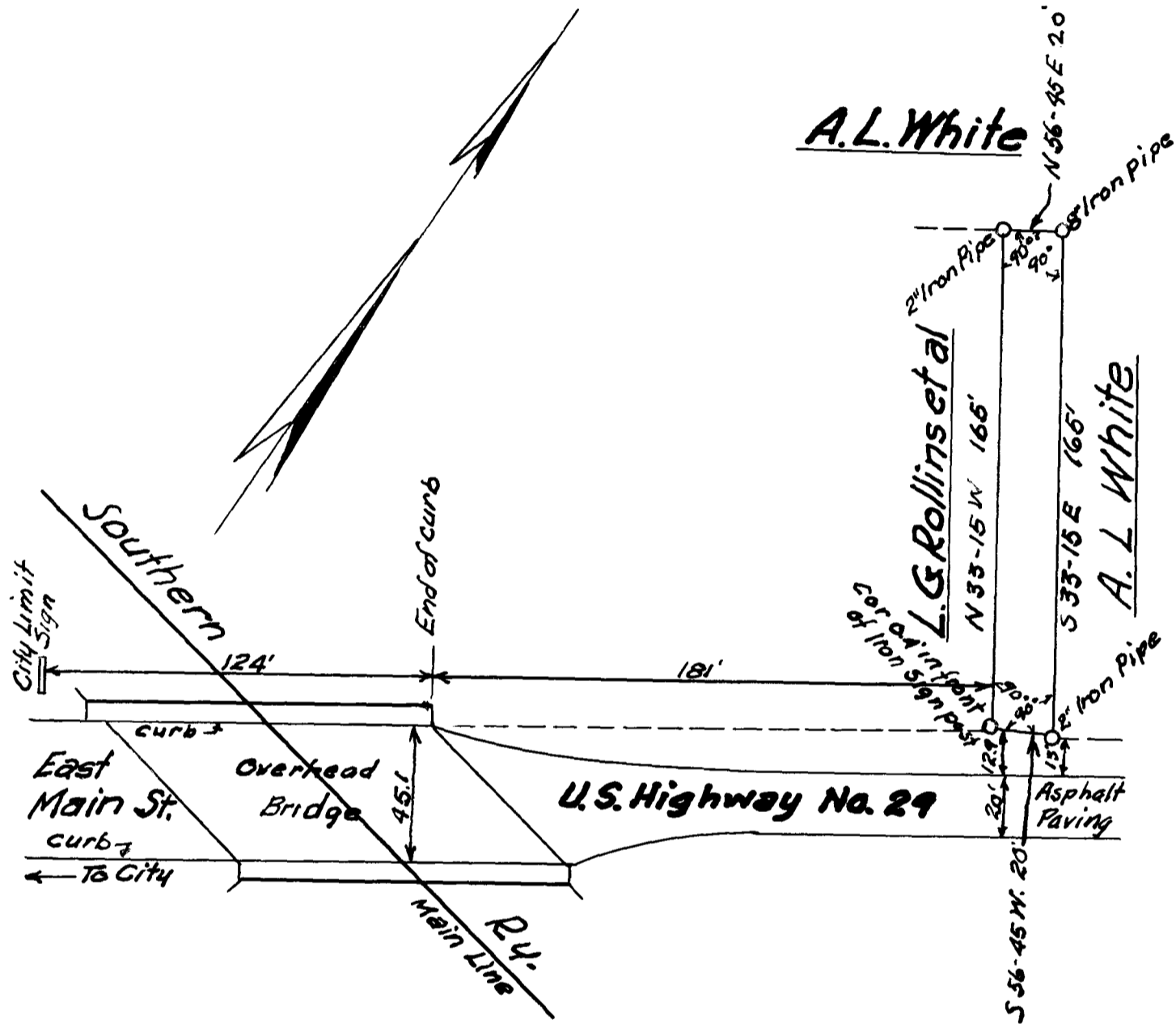


77

EX PARTE
STANDARD OIL CO.



Plat of Property
Near City Limits of Spartanburg, S.C.
 To be conveyed to the
Standard Oil Co. of New Jersey

Scale - 1" = 50'

Tomlinson Engr. Co.
November 29, 1930

Columbia, S.C.
By J. Keels Engr.

BK 131 P 32

1649-A

Registered, certified, and examined December 29, 1930 at 1:42 P.M.