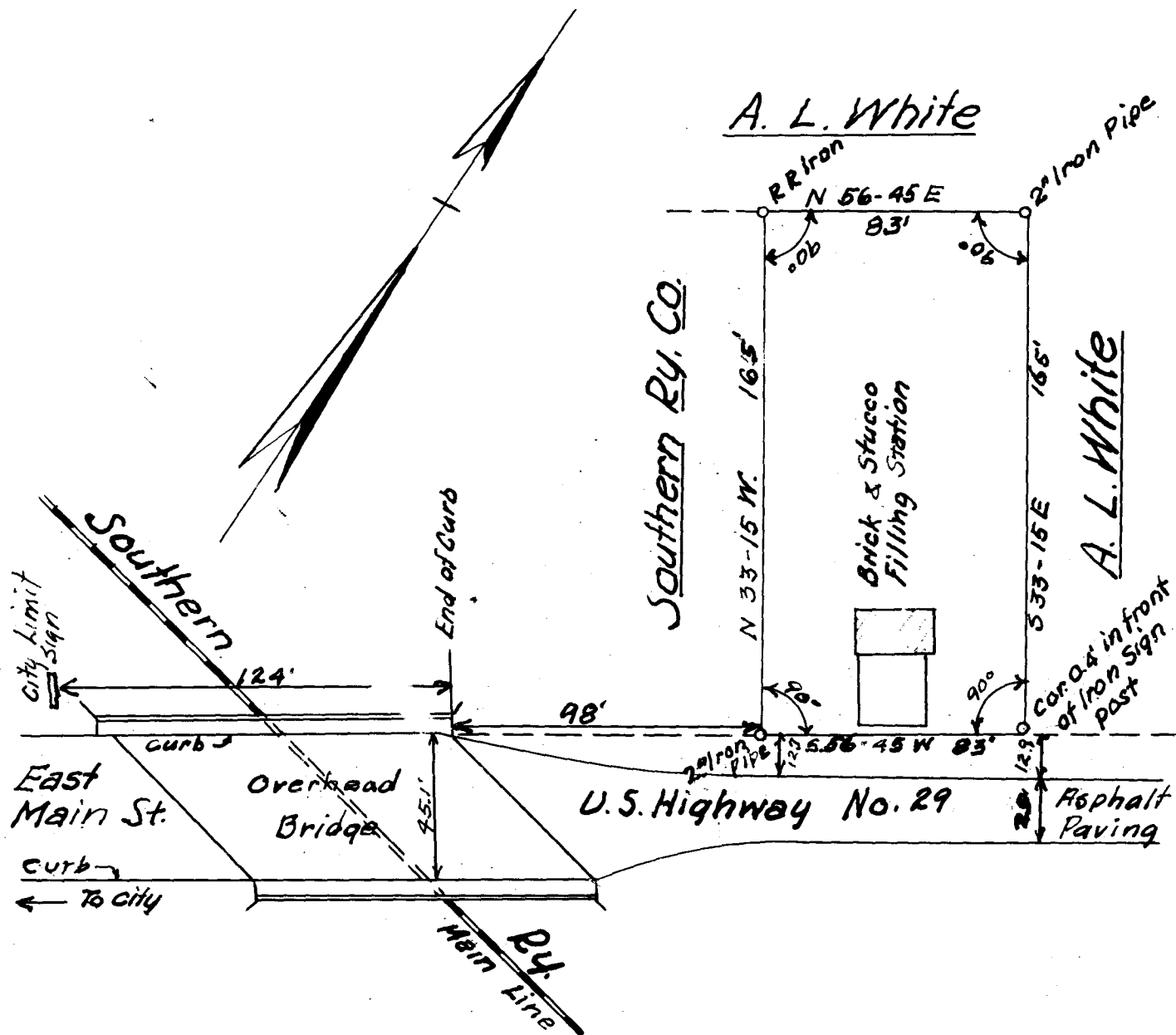


EX PARTE
STANDARD OIL CO.



Plat of Property
Near City Limits of Spartanburg, S.C.
To be conveyed to the
Standard Oil Co. of New Jersey

Scale: 1" = 50'

Tomlinson Engr Co.
November 29-1930

Columbia S.C.
By J. Keels Engr.

BK 131 P32

1648-A1

Registered, certified and examined December 29-1930 at 1:42 P.M.