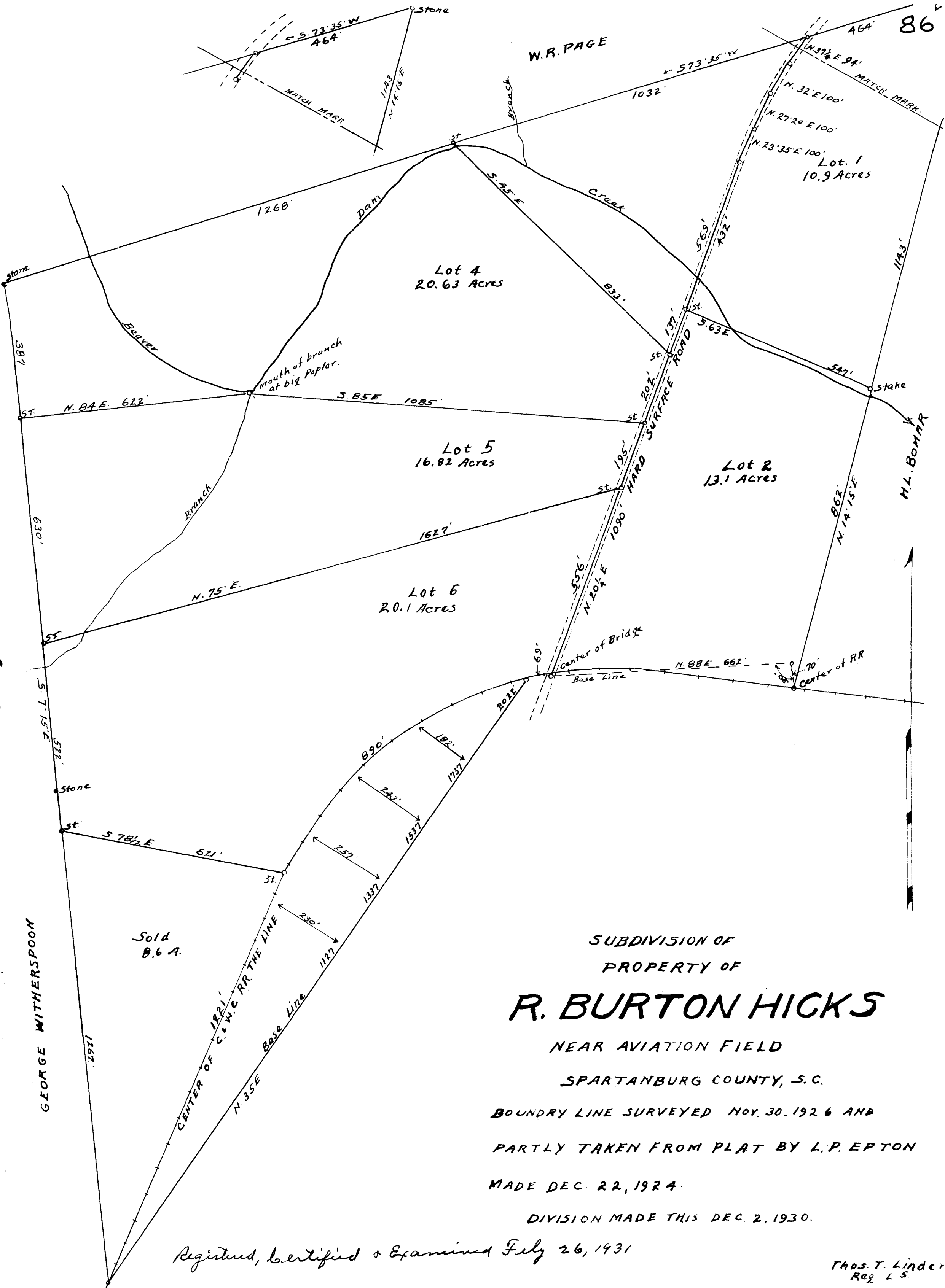


86°



SUBDIVISION OF
PROPERTY OF
R. BURTON HICKS

NEAR AVIATION FIELD
SPARTANBURG COUNTY, S.C.

BOUNDRY LINE SURVEYED NOV. 30, 1926 AND
PARTLY TAKEN FROM PLAT BY L.P. EPTON
MADE DEC. 22, 1924.

DIVISION MADE THIS DEC. 2, 1930.

Registered, Certified & Examined July 26, 1931

Thos. T. Linder
REG. L.S.

Sold
0.6 A.