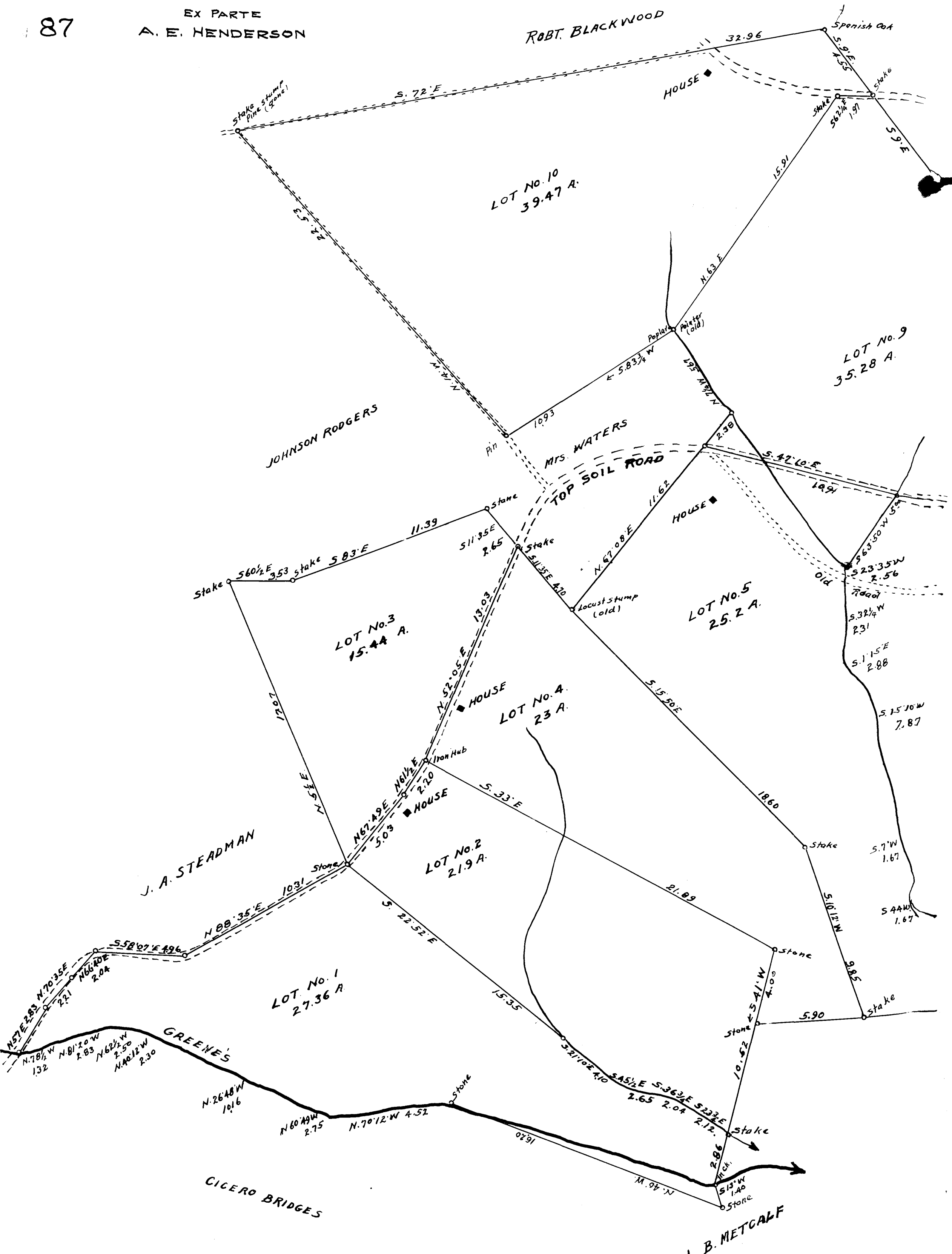


87

EX PARTE  
A. E. HENDERSON



SUBDIVISION OF THE

# A. E. HENDERSON FARM

NEAR

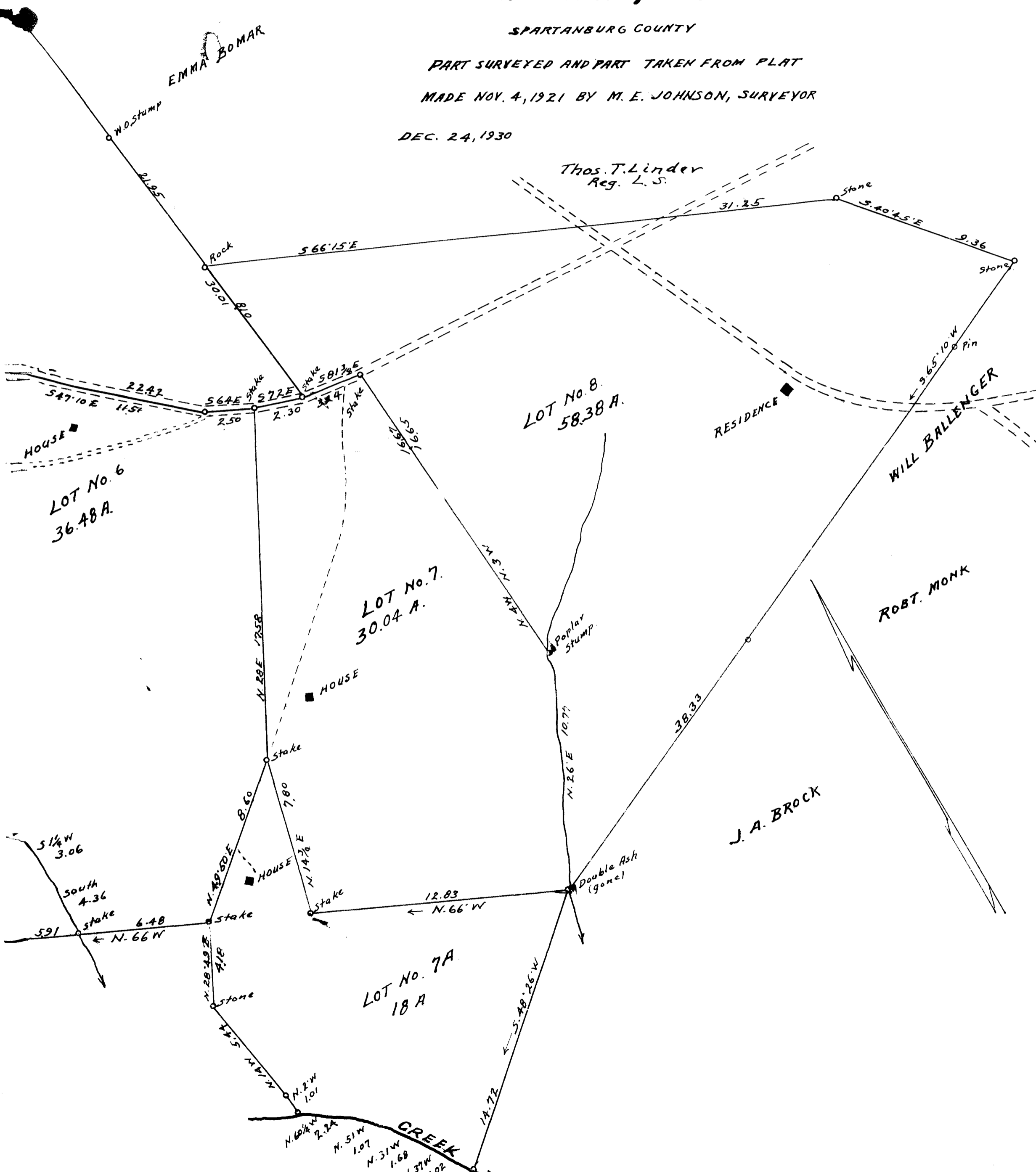
## INMAN, S.C.

SPARTANBURG COUNTY

PART SURVEYED AND PART TAKEN FROM PLAT

MADE NOV. 4, 1921 BY M. E. JOHNSON, SURVEYOR

DEC. 24, 1930



Registered, Certified & Examined March 13 - 1931 at 9:32 a.m.